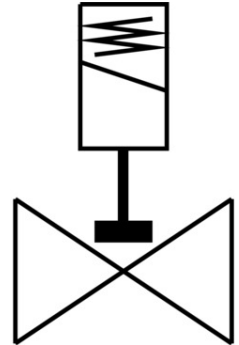


# Air solenoid valve

## VZWD-L-M22C-M-N18-50-V-3AP4-5

FESTO

Part number: 1492033



[PDF](#) General operating condition

## Data sheet

| Feature                          | Value  |
|----------------------------------|--|
| Structural design                | Directly controlled poppet valve   |
| Actuation type                   | Electrical   |
| Sealing principle                | Soft   |
| Mounting position                | Any  |
| Type of mounting                 | Line installation  |
| Fitting connection               | 1/8 NPT  |
| Electrical connection            | Form A<br>Plug<br>as per EN 175301-803<br>Rectangular design   |
| Nominal width                    | 5 mm   |
| Valve function                   | 2/2, closed, monostable  |
| Manual override                  | None   |
| Flow direction                   | Non-reversible   |
| Medium                           | Compressed air as per ISO 8573-1:2010 [7:4:4]<br>Inert gas<br>Mineral oil<br>Water<br>Neutral liquids<br>Other flow media on request |
| Nominal pressure of fitting PN   | 100  |
| Pressure difference              | 0 MPa  |
| Differential pressure            | 0 bar  |
| Pressure difference              | 0 psi  |
| Coil characteristics             | 230 V AC: 50/60 Hz, initial power 18.0 VA, holding power 15.0 VA   |
| Insulation class                 | F  |
| Permissible voltage fluctuations | +/- 10 %   |
| Duty cycle                       | 100%   |
| Reset method                     | Mechanical spring  |
| Type of control                  | Direct   |
| Symbol                           | 00992979   |
| Medium pressure                  | 0 MPa ... 0.5 MPa  |

| Feature                                      | Value                                       |
|--|---|
| Medium pressure                              | 0 bar ... 5 bar                             |
| Medium pressure                              | 0 psi ... 72.5 psi                          |
| Max. viscosity                               | 22 mm <sup>2</sup> /s                       |
| Temperature of medium                        | -10 °C ... 80 °C                            |
| Ambient temperature                          | -10 °C ... 35 °C                            |
| Leak rate to EN 12266-1                      | A   |
| Flow rate Kv                                 | 0.35 m <sup>3</sup> /h                      |
| Standard nominal flow rate                   | 375 l/min                                   |
| On switching time                            | 20 ms                                       |
| Switching time off                           | 18 ms                                       |
| Note on materials                            | RoHS-compliant                              |
| LABS (PWIS) conformity                       | VDMA24364 zone III                          |
| Housing material                             | Brass                                       |
| Material number of housing                   | CW614N                                      |
| Seals material                               | FPM   |
| Product weight                               | 600 g                                       |
| CE marking (see declaration of conformity)   | As per EU low voltage directive             |
| UKCA marking (see declaration of conformity) | To UK instructions for electrical equipment |
| Degree of protection                         | IP65  |
| Corrosion resistance class (CRC)             | 1 - Low corrosion stress                    |