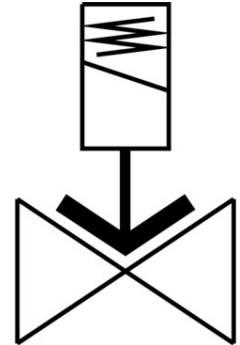


# Air solenoid valve

## VZWF-B-L-M22C-G14-135-V-3AP4-10-R1

FESTO

Part number: 1492342



[PDF](#) General operating condition

## Data sheet

| Feature                          | Value  |
|----------------------------------|--|
| Structural design                | Diaphragm valve<br>Force pilot operated  |
| Actuation type                   | Electrical   |
| Sealing principle                | Soft   |
| Mounting position                | Magnet, upright  |
| Type of mounting                 | Line installation  |
| Fitting connection               | G1/4   |
| Electrical connection            | Form A<br>Plug<br>as per EN 175301-803<br>Rectangular design   |
| Nominal width                    | 13.5 mm  |
| Valve function                   | 2/2, closed, monostable  |
| Manual override                  | None   |
| Flow direction                   | Non-reversible   |
| Medium                           | Compressed air as per ISO 8573-1:2010 [7:-:-]<br>Inert gas<br>Mineral oil<br>Water<br>Neutral liquids<br>Other flow media on request |
| Nominal pressure of fitting PN   | 40   |
| Pressure difference              | 0 MPa  |
| Differential pressure            | 0 bar  |
| Pressure difference              | 0 psi  |
| Coil characteristics             | 230 V AC: 50/60 Hz, initial power 18.0 VA, holding power 15.0 VA   |
| Permissible voltage fluctuations | +/- 10 %   |
| Symbol                           | 00992976   |
| Medium pressure                  | 0 MPa ... 1 MPa  |
| Medium pressure                  | 0 bar ... 10 bar   |
| Medium pressure                  | 0 psi ... 145 psi  |
| Max. viscosity                   | 22 mm <sup>2</sup> /s  |

| <b>Feature</b>                               | <b>Value</b>                                |
|--|---|
| Temperature of medium                        | -10 °C ... 80 °C                            |
| Ambient temperature                          | -10 °C ... 35 °C                            |
| Leak rate to EN 12266-1                      | A   |
| Flow rate Kv                                 | 1.8 m <sup>3</sup> /h                       |
| Standard nominal flow rate                   | 1920 l/min                                  |
| On switching time                            | 130 ms                                      |
| Switching time off                           | 180 ms                                      |
| Note on materials                            | RoHS-compliant                              |
| LABS (PWIS) conformity                       | VDMA24364 zone III                          |
| Housing material                             | Cast stainless steel                        |
| Material number of housing                   | 1.4581                                      |
| Seals material                               | FPM   |
| Material of screws                           | High-alloy stainless steel                  |
| Material number of screw                     | 1.4301                                      |
| Product weight                               | 1000 g                                      |
| CE marking (see declaration of conformity)   | As per EU low voltage directive             |
| UKCA marking (see declaration of conformity) | To UK instructions for electrical equipment |
| Degree of protection                         | IP65  |
| Corrosion resistance class (CRC)             | 3 - High corrosion stress                   |