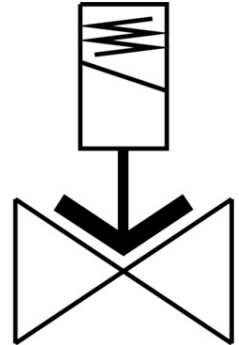


Air solenoid valve

VZWF-B-L-M22C-N34-275-V-2AP4-6-R1

FESTO

Part number: 1492297



[PDF](#) General operating condition

Data sheet

| Feature | Value |
|----------------------------------|--|
| Structural design | Diaphragm valve Force pilot operated |
| Actuation type | Electrical |
| Sealing principle | Soft |
| Mounting position | Magnet, upright |
| Type of mounting | Line installation |
| Fitting connection | 3/4 NPT |
| Electrical connection | Form A Plug as per EN 175301-803 Rectangular design |
| Nominal width | 27.5 mm |
| Valve function | 2/2, closed, monostable |
| Manual override | None |
| Flow direction | Non-reversible |
| Medium | Compressed air as per ISO 8573-1:2010 [7:-:-] Inert gas Mineral oil Water Neutral liquids Other flow media on request |
| Nominal pressure of fitting PN | 40 |
| Pressure difference | 0 MPa |
| Differential pressure | 0 bar |
| Pressure difference | 0 psi |
| Coil characteristics | 110 V AC: 50/60 Hz, initial power 19.0 VA, holding power 16.0 VA |
| Permissible voltage fluctuations | +/- 10 % |
| Symbol | 00992976 |
| Medium pressure | 0 MPa ... 0.6 MPa |
| Medium pressure | 0 bar ... 6 bar |
| Medium pressure | 0 psi ... 87 psi |
| Max. viscosity | 22 mm ² /s |

| Feature | Value |
|--|---|
| Temperature of medium | -10 °C ... 80 °C |
| Ambient temperature | -10 °C ... 35 °C |
| Leak rate to EN 12266-1 | A |
| Flow rate Kv | 7.5 m ³ /h |
| Standard nominal flow rate | 8020 l/min |
| On switching time | 275 ms |
| Switching time off | 290 ms |
| Note on materials | RoHS-compliant |
| LABS (PWIS) conformity | VDMA24364 zone III |
| Housing material | Cast stainless steel |
| Material number of housing | 1.4581 |
| Seals material | FPM |
| Material of screws | High-alloy stainless steel |
| Material number of screw | 1.4301 |
| Product weight | 1500 g |
| CE marking (see declaration of conformity) | As per EU low voltage directive |
| UKCA marking (see declaration of conformity) | To UK instructions for electrical equipment |
| Degree of protection | IP65 |
| Corrosion resistance class (CRC) | 3 - High corrosion stress |