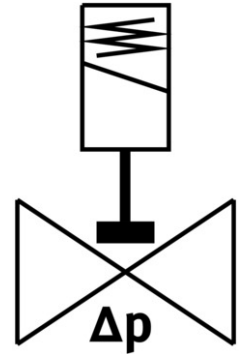


# Air solenoid valve

## VZWP-L-M22C-N12-130-V-3AP4-40

FESTO

Part number: 1489997



 General operating condition

## Data sheet

| Feature                          | Value  |
|----------------------------------|--|
| Structural design                | Pilot-controlled piston poppet valve   |
| Actuation type                   | Electrical   |
| Sealing principle                | Soft   |
| Mounting position                | Coil preferably on top   |
| Type of mounting                 | Line installation  |
| Fitting connection               | 1/2 NPT  |
| Electrical connection            | Form A<br>Plug<br>as per EN 175301-803<br>Rectangular design   |
| Nominal width                    | 13 mm  |
| Valve function                   | 2/2, closed, monostable  |
| Manual override                  | None   |
| Flow direction                   | Non-reversible   |
| Medium                           | Compressed air as per ISO 8573-1:2010 [7:4:4]<br>Inert gas<br>Neutral liquids<br>Other flow media on request |
| Nominal pressure of fitting PN   | 40   |
| Pressure difference              | 0.05 MPa   |
| Differential pressure            | 0.5 bar  |
| Pressure difference              | 7.25 psi   |
| Coil characteristics             | 230 V AC: 50/60 Hz, initial power 10.5 VA, holding power 7.6 VA  |
| Insulation class                 | H  |
| Permissible voltage fluctuations | +/- 10 %   |
| Duty cycle                       | 100%   |
| Type of control                  | Pilot-controlled   |
| Symbol                           | 00992974   |
| Medium pressure                  | 0.05 MPa ... 4 MPa   |
| Medium pressure                  | 0.5 bar ... 40 bar   |
| Medium pressure                  | 7.25 psi ... 580 psi   |

| Feature                                      | Value                                       |
|--|---|
| Max. viscosity                               | 22 mm <sup>2</sup> /s                       |
| Temperature of medium                        | -10 °C ... 80 °C                            |
| Ambient temperature                          | -10 °C ... 35 °C                            |
| Leak rate to EN 12266-1                      | A   |
| Flow rate Kv                                 | 2.5 m <sup>3</sup> /h                       |
| Standard nominal flow rate                   | 2650 l/min                                  |
| On switching time                            | 100 ms                                      |
| Switching time off                           | 250 ms                                      |
| Note on materials                            | RoHS-compliant                              |
| LABS (PWIS) conformity                       | VDMA24364 zone III                          |
| Housing material                             | Cast brass                                  |
| Material number of housing                   | CW617N                                      |
| Seals material                               | FPM   |
| Material of screws                           | High-alloy stainless steel                  |
| Material number of screw                     | 1.4301                                      |
| Product weight                               | 550 g                                       |
| CE marking (see declaration of conformity)   | As per EU low voltage directive             |
| UKCA marking (see declaration of conformity) | To UK instructions for electrical equipment |
| Degree of protection                         | IP65  |
| Corrosion resistance class (CRC)             | 1 - Low corrosion stress                    |