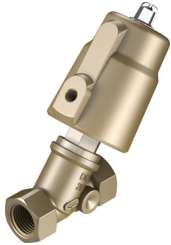


Angle seat valve

VZXF-L-M22C-M-A-G34-160-M1-H3B1T-50-16

FESTO

Part number: 3535643



General operating condition

Data sheet

| Feature | Value |
|----------------------------------|---|
| Structural design | Poppet valve with piston actuator |
| Actuation type | Pneumatic |
| Sealing principle | Soft |
| Mounting position | Any |
| Type of mounting | Line installation |
| Cable connection | Threaded sleeve G3/4 as per DIN ISO 228 |
| Nominal width | 16 mm |
| Valve function | 2/2, closed, monostable |
| Flow direction | Non-reversible |
| Medium pressure | 0 MPa ... 1.6 MPa |
| Medium pressure | 0 bar ... 16 bar |
| Nominal pressure of fitting PN | 16 |
| Exhaust air function | Without flow control option |
| Reset method | Mechanical spring |
| Type of control | Externally controlled |
| Pneumatic connection | Internal thread G1/8 |
| Operating pressure | 0.6 MPa ... 1 MPa |
| Operating pressure | 6 bar ... 10 bar |
| Operating pressure | 87 psi ... 145 psi |
| Symbol | 00991367 |
| Medium | Vapor Inert gas Filtered compressed air, 200 µm filter mesh |
| Flow direction | Above valve seat, for gaseous media |
| Operating medium | Compressed air as per ISO 8573-1:2010 [7:4:4] |
| Max. viscosity | 600 mm ² /s |
| Temperature of medium | -40 °C ... 200 °C |
| Ambient temperature | -10 °C ... 60 °C |
| Flow rate Kv | 6.7 m ³ /h |
| Note on materials | RoHS-compliant |
| LABS (PWIS) conformity | VDMA24364 zone III |
| Valve housing material | Red brass |
| Material number, fitting housing | CC499K |
| Spindle seal material | PTFE |
| Seat seal material | PTFE |
| Product weight | 1300 g |

| Feature | Value |
|----------------------------------|--------------------------|
| Corrosion resistance class (CRC) | 1 - Low corrosion stress |
| Drive housing material | Brass |