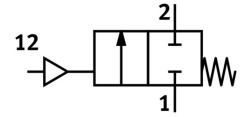


Angle seat valve VZXF-L-M22C-M-A-N112-350-H3B1-50-8

FESTO

Part number: 1002541



General operating condition

Data sheet

Feature	Value
Structural design	Poppet valve with piston actuator
Actuation type	Pneumatic
Sealing principle	Soft
Mounting position	Any
Type of mounting	Line installation
Cable connection	Threaded sleeve 1 1/2 as per ANSI/ASME B 1.20.1
Nominal width	35 mm
Valve function	2/2, closed, monostable
Flow direction	Non-reversible
Medium pressure	0 MPa ... 0.8 MPa
Medium pressure	0 bar ... 8 bar
Nominal pressure of fitting PN	16
Exhaust air function	Without flow control option
Reset method	Mechanical spring
Type of control	Externally controlled
Pneumatic connection	Internal thread G1/8
Operating pressure	0.6 MPa ... 1 MPa
Operating pressure	6 bar ... 10 bar
Operating pressure	87 psi ... 145 psi
Symbol	00991367
Medium	Vapor Inert gas Filtered compressed air, 200 µm filter mesh
Flow direction	Above valve seat, for gaseous media
Operating medium	Compressed air as per ISO 8573-1:2010 [7:4:4]
Max. viscosity	600 mm ² /s
Temperature of medium	-10 °C ... 80 °C
Ambient temperature	-10 °C ... 60 °C
Flow rate Kv	23 m ³ /h
Note on materials	RoHS-compliant
LABS (PWIS) conformity	VDMA24364 zone III
Valve housing material	Red brass
Material number, fitting housing	CC499K
Spindle seal material	NBR
Seat seal material	PTFE
Product weight	2300 g

Feature	Value
CE marking (see declaration of conformity)	as per EU pressure equipment directive
UKCA marking (see declaration of conformity)	according to UK regulations for pressure equipment
Corrosion resistance class (CRC)	1 - Low corrosion stress
Drive housing material	Brass