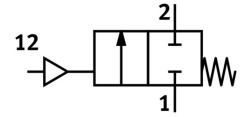


Angle seat valve VZXF-L-M22C-M-B-N114-310-M1-V4B2T-50-7

FESTO

Part number: 3539818



General operating condition

Data sheet

| Feature | Value |
|----------------------------------|--|
| Structural design | Poppet valve with piston actuator |
| Actuation type | Pneumatic |
| Sealing principle | Soft |
| Mounting position | Any |
| Type of mounting | Line installation |
| Cable connection | Threaded sleeve 1 1/4 as per ANSI/ASME B 1.20.1 |
| Nominal width | 31 mm |
| Valve function | 2/2, closed, monostable |
| Flow direction | Non-reversible |
| Medium pressure | 0 MPa ... 0.7 MPa |
| Medium pressure | 0 bar ... 7 bar |
| Nominal pressure of fitting PN | 40 |
| Exhaust air function | Without flow control option |
| Reset method | Mechanical spring |
| Type of control | Externally controlled |
| Pneumatic connection | Internal thread G1/8 |
| Operating pressure | 0.6 MPa ... 1 MPa |
| Operating pressure | 6 bar ... 10 bar |
| Operating pressure | 87 psi ... 145 psi |
| Symbol | 00991367 |
| Medium | Vapor Hydraulic fluid based on mineral oil Inert gas Mineral oil Water Filtered compressed air, 200 µm filter mesh Neutral liquids |
| Flow direction | Under valve seat, for gaseous and liquid media |
| Operating medium | Compressed air as per ISO 8573-1:2010 [7:4:4] |
| Max. viscosity | 600 mm ² /s |
| Temperature of medium | -40 °C ... 200 °C |
| Ambient temperature | -10 °C ... 60 °C |
| Flow rate Kv | 10.7 m ³ /h |
| Note on materials | RoHS-compliant |
| LABS (PWIS) conformity | VDMA24364 zone III |
| Valve housing material | Cast stainless steel |
| Material number, fitting housing | 1.4408 |

| Feature | Value |
|--|--|
| Spindle seal material | PTFE |
| Seat seal material | PTFE |
| Product weight | 2200 g |
| CE marking (see declaration of conformity) | as per EU pressure equipment directive |
| UKCA marking (see declaration of conformity) | according to UK regulations for pressure equipment |
| Corrosion resistance class (CRC) | 2 - Moderate corrosion stress |
| Drive housing material | Brass, nickel-plated |