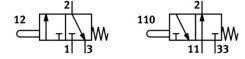


Stem actuated valve V/O-3-1/8

Part number: 4938

FESTO



[General operating condition](#)

Data sheet

Feature	Value
Valve function	3/2, open/closed, monostable
Actuation type	Mechanical
Standard nominal flow rate	140 l/min
Pneumatic working port	G1/8
Operating pressure	-0.95 bar ... 8 bar
Structural design	Piston seat
Nominal width	3.5 mm
Type of control	Direct
Symbol	00991832
Operating medium	Compressed air as per ISO 8573-1:2010 [-:-:-]
Information on operating and pilot media	Operation with oil lubrication possible (required for further use)
LABS (PWIS) conformity	VDMA24364-B1/B2-L
Ambient temperature	-10 °C ... 60 °C
Actuating force	28 N
Actuation force in initial position closed	37.53 N
Product weight	90 g
Type of mounting	With through-hole
Pneumatic connection 1	G1/8
Pneumatic connection 2	G1/8
Pneumatic connection 3	G1/8
Seals material	NBR
Housing material	Aluminum, anodized