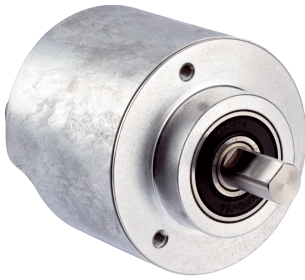




AFS/AFM60 Ethernet

High-resolution absolute encoder with PROFINET, EtherNet/IP™ or EtherCAT® interface

SICK
Sensor Intelligence.



Technical data overview

Encoder design	Multiturn / Singleturn (depending on type)																			
Shaft type	Solid shaft, Servo flange Solid shaft, face mount flange Blind hollow shaft																			
Shaft diameter	<table border="0"> <tr> <td>Solid shaft, Servo flange</td> <td>6 mm</td> </tr> <tr> <td rowspan="4">Solid shaft, face mount flange</td> <td>10 mm</td> </tr> <tr> <td>10 mm Round</td> </tr> <tr> <td>3/8" Round</td> </tr> <tr> <td>3/8"</td> </tr> <tr> <td rowspan="7">Blind hollow shaft</td> <td>12 mm</td> </tr> <tr> <td>8 mm</td> </tr> <tr> <td>3/8"</td> </tr> <tr> <td>10 mm</td> </tr> <tr> <td>1/2"</td> </tr> <tr> <td>14 mm</td> </tr> <tr> <td>15 mm</td> </tr> <tr> <td></td> <td>1/4"</td> </tr> <tr> <td></td> <td>5/8"</td> </tr> </table>	Solid shaft, Servo flange	6 mm	Solid shaft, face mount flange	10 mm	10 mm Round	3/8" Round	3/8"	Blind hollow shaft	12 mm	8 mm	3/8"	10 mm	1/2"	14 mm	15 mm		1/4"		5/8"
Solid shaft, Servo flange	6 mm																			
Solid shaft, face mount flange	10 mm																			
	10 mm Round																			
	3/8" Round																			
	3/8"																			
Blind hollow shaft	12 mm																			
	8 mm																			
	3/8"																			
	10 mm																			
	1/2"																			
	14 mm																			
	15 mm																			
	1/4"																			
	5/8"																			
Connection type	Male connector, 1x, M12, 4-pin, axial Female connector, 2x, M12, 4-pin, axial																			
Communication interface	EtherCAT® EtherNet/IP™ PROFINET (depending on type)																			
Number of steps per revolution (max. resolution)	262,144 (18 bit)																			
Max. resolution (number of steps per revolution x number of revolutions)	18 bit x 12 bit (262,144 x 4,096)																			
Programmable/configurable	Over PLC-Engineering-Tool Over webserver (depending on type)																			
Operating temperature range	-40 °C ... +85 °C																			
Enclosure rating	IP65 (IEC 60529) Shaft side IP67 (IEC 60529) Housing side ¹⁾																			

¹⁾ With mating connector fitted.

Product description

The high-resolution AFS/AFM60 Ethernet absolute encoders take high-precision measurements of the absolute position and speed. Comprehensive smart functions for diagnosing parameters such as temperature or operating time and for early error detection increase the machine and plant availability. Various configuration options – for example, modifying the resolution – simplify installation and enable customized adjustment to each application. SICK provides function blocks for the encoders with a PROFINET and EtherNet/IP™ interface, and the AFS/AFM60 EtherNet/IP™ variants also come with an active web server. Their compact design also makes AFS/AFM60 Ethernet absolute encoders suitable for applications where space is at a premium.

At a glance

- High-resolution absolute encoder with up to 30 bits (AFM60) or 18 bits (AFS60)
- Face mount flange, servo flange, blind hollow shaft
- Connection type: 3 x M12 axial plug
- Communication interfaces: PROFINET, EtherNet/IP™, EtherCAT®
- Round axis functionality
- Diagnostic functions
- Status display via 5 LEDs

Your benefits

- Their high resolution and measurement accuracy enable them to be used in demanding applications
- Application-specific solutions thanks to a variety of mechanical interfaces
- Smart diagnostics functions for increasing the availability of the overall system
- Easy installation due to various configuration options and function blocks (type-dependent)
- Fully scalable for binary, non-binary, and non-integer resolutions thanks to round axis functionality
- Compact and cost-efficient design
- Integrated web server for easy parameterization without the need for specialized interface knowledge (type-dependent)

Fields of application

Measurement of absolute position and speed in various machines and systems used in industrial automation as well as production and process technology, e.g., in storage systems, packaging machines, hydraulic presses, printing machines, rotating tables.

Ordering information

Other models and accessories → www.sick.com/AFS_AFM60_Ethernet

- **Mechanical design:** Solid shaft, Servo flange
- **Singleturn or multiturn version:** Multiturn
- **Communication interface:** EtherCAT®

Communication Interface detail	Shaft diameter	Connection type	Programmable/configurable	Type	Part no.
CoE (CAN over EtherCAT®)	6 mm	Male connector, Female connector, 1x, 2x, M12, M12, 4-pin, 4-pin, axial, axial ^{1) 2)}	✓	AFM60A-S1EB018x12	1059061

¹⁾ A-coded.

²⁾ D-coded.

- **Mechanical design:** Solid shaft, Servo flange
- **Singleturn or multiturn version:** Singleturn
- **Communication interface:** EtherCAT®

Communication Interface detail	Shaft diameter	Connection type	Programmable/configurable	Type	Part no.
CoE (CAN over EtherCAT®)	6 mm	Male connector, Female connector, 1x, 2x, M12, M12, 4-pin, 4-pin, axial, axial ^{1) 2)}	✓	AFS60A-S1EB262144	1059072

¹⁾ A-coded.

²⁾ D-coded.

- **Mechanical design:** Solid shaft, face mount flange
- **Singleturn or multiturn version:** Multiturn
- **Communication interface:** EtherCAT®

Communication Interface detail	Shaft diameter	Connection type	Programmable/configurable	Type	Part no.
CoE (CAN over EtherCAT®)	10 mm	Male connector, Female connector, 1x, 2x, M12, M12, 4-pin, 4-pin, axial, axial ^{1) 2)}	✓	AFM60A-S4EB018x12	1059060

¹⁾ A-coded.

²⁾ D-coded.

- **Mechanical design:** Solid shaft, face mount flange
- **Singleturn or multiturn version:** Singleturn
- **Communication interface:** EtherCAT®

Communication Interface detail	Shaft diameter	Connection type	Programmable/configurable	Type	Part no.
CoE (CAN over EtherCAT®)	10 mm	Male connector, Female connector, 1x,	✓	AFS60A-S4EB262144	1059071

¹⁾ A-coded.

²⁾ D-coded.

Communication Interface detail	Shaft diameter	Connection type	Programmable/configurable	Type	Part no.
		2x, M12, M12, 4-pin, 4-pin, axial, axial ^{1) 2)}			

1) A-coded.

2) D-coded.

- **Mechanical design:** blind hollow shaft
- **Singleturn or multiturn version:** Multiturn
- **Communication interface:** EtherCAT®
- **Communication interface detail:** CoE (CAN over EtherCAT®)
- **Connection type:** male connector, Female connector, 1x, 2x, M12, M12, 4-pin, 4-pin, axial, axial (A-coded.) (D-coded.)
- **Programmable/configurable:** ✓

Shaft diameter	Type	Part no.
1/2"	AFM60A-BFEB018x12	1059055
1/4"	AFM60A-BKEB018x12	1059052
10 mm	AFM60A-BDEB018x12	1059057
12 mm	AFM60A-BEEB018x12	1059056
14 mm	AFM60A-BGEB018x12	1059054
15 mm	AFM60A-BHEB018x12	1059053
3/8"	AFM60A-BCEB018x12	1059058
8 mm	AFM60A-BBEB018x12	1059059

- **Mechanical design:** blind hollow shaft
- **Singleturn or multiturn version:** Singleturn
- **Communication interface:** EtherCAT®
- **Communication interface detail:** CoE (CAN over EtherCAT®)
- **Connection type:** male connector, Female connector, 1x, 2x, M12, M12, 4-pin, 4-pin, axial, axial (A-coded.) (D-coded.)
- **Programmable/configurable:** ✓

Shaft diameter	Type	Part no.
1/2"	AFS60A-BFEB262144	1059066
1/4"	AFS60A-BKEB262144	1059062
10 mm	AFS60A-BDEB262144	1059068
12 mm	AFS60A-BEEB262144	1059067
14 mm	AFS60A-BGEB262144	1059065
15 mm	AFS60A-BHEB262144	1059064
3/8"	AFS60A-BCEB262144	1059069
5/8"	AFS60A-BJEB262144	1059063
8 mm	AFS60A-BBEB262144	1059070

- **Singleturn or multiturn version:** Multiturn
- **Communication interface:** EtherCAT®
- **Specialty:** Sales Kit

Scope of delivery	Type	Part no.
1 x AFM60A-BDEB018x12 (1059057), 1 x STE-1204-WZ (6048262), 1 x DOS-1204-W (6007303)	AFM60A-BDEB Sales-Kit 01	1060476
1 x AFM60A-BDEB018x12 (1059057), 1 x YN2D24-050P-N1XLEAX (2106175), 1 x YG2A14-050UB3XLEAX (2095767)	AFM60A-BDEB Sales-Kit 02	1060486
1 x AFM60A-BDEB018x12 (1059057), 2 x STE-1204-WZ (6048262), 1 x DOS-1204-W (6007303)	AFM60A-BDEB Sales-Kit 03	1060497
1 x AFM60A-BDEB018x12 (1059057), 2 x YN2D24-050P-N1XLEAX (2106175), 1 x YG2A14-050UB3XLEAX (2095767)	AFM60A-BDEB Sales-Kit 04	1060507
1 x AFM60A-BEEB018x12 (1059056), 1 x STE-1204-WZ (6048262), 1 x DOS-1204-W (6007303)	AFM60A-BEEB Sales-Kit 01	1060477
1 x AFM60A-BEEB018x12 (1059056), 1 x YN2D24-050P-N1XLEAX (2106175), 1 x YG2A14-050UB3XLEAX (2095767)	AFM60A-BEEB Sales-Kit 02	1060487
1 x AFM60A-BEEB018x12 (1059056), 2 x STE-1204-WZ (6048262), 1 x DOS-1204-W (6007303)	AFM60A-BEEB Sales-Kit 03	1060498
1 x AFM60A-BEEB018x12 (1059056), 2 x YN2D24-050P-N1XLEAX (2106175), 1 x YG2A14-050UB3XLEAX (2095767)	AFM60A-BEEB Sales-Kit 04	1060508
1 x AFM60A-BHEB018x12 (1059053), 1 x STE-1204-WZ (6048262), 1 x DOS-1204-W (6007303)	AFM60A-BHEB Sales-Kit 01	1060478
1 x AFM60A-BHEB018x12 (1059053), 1 x YN2D24-050P-N1XLEAX (2106175), 1 x YG2A14-050UB3XLEAX (2095767)	AFM60A-BHEB Sales-Kit 02	1060488
1 x AFM60A-BHEB018x12 (1059053), 2 x STE-1204-WZ (6048262), 1 x DOS-1204-W (6007303)	AFM60A-BHEB Sales-Kit 03	1060499
1 x AFM60A-BHEB018x12 (1059053), 2 x YN2D24-050P-N1XLEAX (2106175), 1 x YG2A14-050UB3XLEAX (2095767)	AFM60A-BHEB Sales-Kit 04	1060509
1 x AFM60A-S1EB018x12 (1059061), 1 x STE-1204-WZ (6048262), 1 x DOS-1204-W (6007303)	AFM60A-S1EB Sales-Kit 01	1060474
1 x AFM60A-S1EB018x12 (1059061), 1 x YN2D24-050P-N1XLEAX (2106175), 1 x YG2A14-050UB3XLEAX (2095767)	AFM60A-S1EB Sales-Kit 02	1060484
1 x AFM60A-S1EB018x12 (1059061), 2 x STE-1204-WZ (6048262), 1 x DOS-1204-W (6007303)	AFM60A-S1EB Sales-Kit 03	1060495
1 x AFM60A-S1EB018x12 (1059061), 2 x YN2D24-050P-N1XLEAX (2106175), 1 x YG2A14-050UB3XLEAX (2095767)	AFM60A-S1EB Sales-Kit 04	1060505
1 x AFM60A-S4EB018x12 (1059060), 1 x STE-1204-WZ (6048262), 1 x DOS-1204-W (6007303)	AFM60A-S4EB Sales-Kit 01	1060475
1 x AFM60A-S4EB018x12 (1059060), 1 x YN2D24-050P-N1XLEAX (2106175), 1 x YG2A14-050UB3XLEAX (2095767)	AFM60A-S4EB Sales-Kit 02	1060485
1 x AFM60A-S4EB018x12 (1059060), 2 x STE-1204-WZ (6048262), 1 x DOS-1204-W (6007303)	AFM60A-S4EB Sales-Kit 03	1060496
1 x AFM60A-S4EB018x12 (1059060), 2 x YN2D24-050P-N1XLEAX (2106175), 1 x YG2A14-050UB3XLEAX (2095767)	AFM60A-S4EB Sales-Kit 04	1060506

- **Singleturn or multiturn version:** Singleturn
- **Communication interface:** EtherCAT®
- **Specialty:** Sales Kit

Scope of delivery	Type	Part no.
1 x AFS60A-BDEB262144 (1059068), 1 x STE-1204-WZ (6048262), 1 x DOS-1204-W (6007303)	AFS60A-BDEB Sales-Kit 01	1060471
1 x AFS60A-BDEB262144 (1059068), 1 x YN2D24-050P-N1XLEAX (2106175), 1 x YG2A14-050UB3XLEAX (2095767)	AFS60A-BDEB Sales-Kit 02	1060481
1 x AFS60A-BDEB262144 (1059068), 2 x STE-1204-WZ (6048262), 1 x DOS-1204-W (6007303)	AFS60A-BDEB Sales-Kit 03	1060491
1 x AFS60A-BDEB262144 (1059068), 2 x YN2D24-050P-N1XLEAX (2106175), 1 x YG2A14-050UB3XLEAX (2095767)	AFS60A-BDEB Sales-Kit 04	1060502
1 x AFS60A-BEEB262144 (1059067), 1 x STE-1204-WZ (6048262), 1 x DOS-1204-W (6007303)	AFS60A-BEEB Sales-Kit 01	1060472
1 x AFS60A-BEEB262144 (1059067), 1 x YN2D24-050P-N1XLEAX (2106175), 1 x YG2A14-050UB3XLEAX (2095767)	AFS60A-BEEB Sales-Kit 02	1060482
1 x AFS60A-BEEB262144 (1059067), 2 x STE-1204-WZ (6048262), 1 x DOS-1204-W (6007303)	AFS60A-BEEB Sales-Kit 03	1060492
1 x AFS60A-BEEB262144 (1059067), 2 x YN2D24-050P-N1XLEAX (2106175), 1 x YG2A14-050UB3XLEAX (2095767)	AFS60A-BEEB Sales-Kit 04	1060503
1 x AFS60A-BHEB262144 (1059064), 1 x STE-1204-WZ (6048262), 1 x DOS-1204-W (6007303)	AFS60A-BHEB Sales-Kit 01	1060473
1 x AFS60A-BHEB262144 (1059064), 1 x YN2D24-050P-N1XLEAX (2106175), 1 x YG2A14-050UB3XLEAX (2095767)	AFS60A-BHEB Sales-Kit 02	1060483
1 x AFS60A-BHEB262144 (1059064), 2 x STE-1204-WZ (6048262), 1 x DOS-1204-W (6007303)	AFS60A-BHEB Sales-Kit 03	1060493
1 x AFS60A-BHEB262144 (1059064), 2 x YN2D24-050P-N1XLEAX (2106175), 1 x YG2A14-050UB3XLEAX (2095767)	AFS60A-BHEB Sales-Kit 04	1060504
1 x AFS60A-S1EB262144 (1059072), 1 x STE-1204-WZ (6048262), 1 x DOS-1204-W (6007303)	AFS60A-S1EB Sales-Kit 01	1060469
1 x AFS60A-S1EB262144 (1059072), 1 x YN2D24-050P-N1XLEAX (2106175), 1 x YG2A14-050UB3XLEAX (2095767)	AFS60A-S1EB Sales-Kit 02	1060479
1 x AFS60A-S1EB262144 (1059072), 2 x STE-1204-WZ (6048262), 1 x DOS-1204-W (6007303)	AFS60A-S1EB Sales-Kit 03	1060489
1 x AFS60A-S1EB262144 (1059072), 2 x YN2D24-050P-N1XLEAX (2106175), 1 x YG2A14-050UB3XLEAX (2095767)	AFS60A-S1EB Sales-Kit 04	1060500
1 x AFS60A-S4EB262144 (1059071), 1 x STE-1204-WZ (6048262), 1 x DOS-1204-W (6007303)	AFS60A-S4EB Sales-Kit 01	1060470
1 x AFS60A-S4EB262144 (1059071), 1 x YN2D24-050P-N1XLEAX (2106175), 1 x YG2A14-050UB3XLEAX (2095767)	AFS60A-S4EB Sales-Kit 02	1060480
1 x AFS60A-S4EB262144 (1059071), 2 x STE-1204-WZ (6048262), 1 x DOS-1204-W (6007303)	AFS60A-S4EB Sales-Kit 03	1060490
1 x AFS60A-S4EB262144 (1059071), 2 x YN2D24-050P-N1XLEAX (2106175), 1 x YG2A14-050UB3XLEAX (2095767)	AFS60A-S4EB Sales-Kit 04	1060501

- **Mechanical design:** Solid shaft, Servo flange
- **Singleturn or multiturn version:** Multiturn
- **Communication interface:** EtherNet/IP™

Shaft diameter	Connection type	Programmable/configurable	Type	Part no.
6 mm	Male connector, Female connector, 1x, 2x, M12, M12, 4-pin, 4-pin, axial, axial ^{1) 2)}	✓	AFM60A-S1IB018x12	1055331

¹⁾ A-coded.

²⁾ D-coded.

- **Mechanical design:** Solid shaft, Servo flange
- **Singleturn or multiturn version:** Singleturn
- **Communication interface:** EtherNet/IP™

Shaft diameter	Connection type	Programmable/configurable	Type	Part no.
6 mm	Male connector, Female connector, 1x, 2x, M12, M12, 4-pin, 4-pin, axial, axial ^{1) 2)}	✓	AFS60A-S1IB262144	1055362

¹⁾ A-coded.

²⁾ D-coded.

- **Mechanical design:** Solid shaft, face mount flange
- **Singleturn or multiturn version:** Multiturn
- **Communication interface:** EtherNet/IP™
- **Connection type:** male connector, Female connector, 1x, 2x, M12, M12, 4-pin, 4-pin, axial, axial (A-coded.) (D-coded.)
- **Programmable/configurable:** ✓

Shaft diameter	Type	Part no.
10 mm	AFM60A-S4IB000S02	1064852
	AFM60A-S4IB018x12	1055334
	AFM60A-S5IB018x12	1059130
3/8"	AFM60A-S6IB018x12	1070433
	AFM60A-S7IB018x12	1061098

- **Mechanical design:** Solid shaft, face mount flange
- **Singleturn or multiturn version:** Singleturn
- **Communication interface:** EtherNet/IP™
- **Connection type:** male connector, Female connector, 1x, 2x, M12, M12, 4-pin, 4-pin, axial, axial (A-coded.) (D-coded.)
- **Programmable/configurable:** ✓

Shaft diameter	Type	Part no.
10 mm	AFS60A-S4IB262144	1055364
	AFS60A-S5IB262144	1085628
3/8"	AFS60A-S6IB262144	1073147
	AFS60A-S7IB262144	1069404

- **Mechanical design:** blind hollow shaft
- **Singleturn or multiturn version:** Multiturn
- **Communication interface:** EtherNet/IP™
- **Connection type:** male connector, Female connector, 1x, 2x, M12, M12, 4-pin, 4-pin, axial, axial (A-coded.) (D-coded.)
- **Programmable/configurable:** ✓

Shaft diameter	Type	Part no.
1/2"	AFM60A-BFIB018x12	1059706
1/4"	AFM60A-BKIB018x12	1081418
10 mm	AFM60A-BDIB018x12	1055325
12 mm	AFM60A-BEIB000S01	1064851
	AFM60A-BEIB018x12	1055326
14 mm	AFM60A-BGIB018x12	1062548
15 mm	AFM60A-BHIB018x12	1055328
8 mm	AFM60A-BBIB018x12	1077495

- **Mechanical design:** blind hollow shaft
- **Singleturn or multiturn version:** Singleturn
- **Communication interface:** EtherNet/IP™
- **Connection type:** male connector, Female connector, 1x, 2x, M12, M12, 4-pin, 4-pin, axial, axial (A-coded.) (D-coded.)
- **Programmable/configurable:** ✓

Shaft diameter	Type	Part no.
1/2"	AFS60A-BFIB262144	1071317
1/4"	AFS60A-BKIB262144	1068497
10 mm	AFS60A-BDIB262144	1055356
12 mm	AFS60A-BEIB262144	1055358
15 mm	AFS60A-BHIB262144	1055360
3/8"	AFS60A-BCIB262144	1062844
5/8"	AFS60A-BJIB262144	1094796
8 mm	AFS60A-BBIB262144	1116899

- **Singleturn or multiturn version:** Multiturn
- **Communication interface:** EtherNet/IP™
- **Programmable/configurable:** ✓
- **Specialty:** Sales Kit

Scope of delivery	Type	Part no.
1 x AFM60A-S1IB018x12 (1055331), 1 x YN2D24-050P-N1XLEAX (2106175), 1 x YG2A14-050UB3XLEAX (2095767)	AFM60A-S1IB Sales Kit 04	1057752
1 x AFM60A-BDIB018x12 (1055325), 1 x STE-1204-WE (6048152), 1 x DOS-1204-W (6007303)	AMS60A-BDIB Sales Kit 01	1057724
1 x AFM60A-BDIB018x12 (1055325), 1 x YN2D24-050P-N1XLEAX (2106175), 1 x YG2A14-050UB3XLEAX (2095767)	AFM60A-BDIB Sales Kit 02	1057744
1 x AFM60A-BDIB018x12 (1055325), 2 x STE-1204-WE (6048152), 1 x DOS-1204-W (6007303)	AFM60A-BDIB Sales Kit 03	1057734
1 x AFM60A-BDIB018x12 (1055325), 2 x YN2D24-050P-N1XLEAX (2106175), 1 x YG2A14-050UB3XLEAX (2095767)	AFM60A-BDIB Sales Kit 04	1057754
1 x AFM60A-BEIB018x12 (1055326), 1 x STE-1204-WE (6048152), 1 x DOS-1204-W (6007303)	AFM60A-BEIB Sales Kit 01	1057725

Scope of delivery	Type	Part no.
1 x AFM60A-BEIB018x12 (1055326), 1 x STE-1204-WE (6048152), DOS-1204-W (6007303)	AFM60A-BEIB Sales Kit 03	1057735
1 x AFM60A-BEIB018x12 (1055326), 1 x YN2D24-050P-N1XLEAX (2106175), 1 x YG2A14-050UB3XLEAX (2095767)	AFM60A-BEIB Sales Kit 02	1057745
1 x AFM60A-BEIB018x12 (1055326), 2 x YN2D24-050P-N1XLEAX (2106175), 1 x YG2A14-050UB3XLEAX (2095767)	AFM60A-BEIB Sales Kit 04	1057755
1 x AFM60A-BHIB018x12 (1055328), 1 x STE-1204-WE (6048152), 1 x DOS-1204-W (6007303)	AFM60A-BHIB Sales Kit 01	1057726
1 x AFM60A-BHIB018x12 (1055328), 1 x YN2D24-050P-N1XLEAX (2106175), 1 x YG2A14-050UB3XLEAX (2095767)	AFM60A-BHIB Sales Kit 02	1057746
1 x AFM60A-BHIB018x12 (1055328), 2 x STE-1204-WE (6048152), 1 x DOS-1204-W (6007303)	AFM60A-BHIB Sales Kit 03	1057736
1 x AFM60A-BHIB018x12 (1055328), 2 x YN2D24-050P-N1XLEAX (2106175), 1 x YG2A14-050UB3XLEAX (2095767)	AFM60A-BHIB Sales Kit 04	1057756
1 x AFM60A-S1IB018x12 (1055331), 1 x STE-1204-WE (6048152), 1 x DOS-1204-W (6007303)	AFM60A-S1IB Sales Kit 01	1057722
1 x AFM60A-S1IB018x12 (1055331), 1 x YN2D24-050P-N1XLEAX (2106175), 1 x YG2A14-050UB3XLEAX (2095767)	AFM60A-S1IB Sales Kit 02	1057742
1 x AFM60A-S1IB018x12 (1055331), 2 x STE-1204-WE (6048152), 1 x DOS-1204-W (6007303)	AFM60A-S1IB Sales Kit 03	1057732
1 x AFM60A-S4IB018x12 (1055334), 1 x STE-1204-WE (6048152), 1 x DOS-1204-W (6007303)	AFM60A-S4IB Sales Kit 01	1057723
1 x AFM60A-S4IB018x12 (1055334), 1 x YN2D24-050P-N1XLEAX (2106175), 1 x YG2A14-050UB3XLEAX (2095767)	AFM60A-S4IB Sales Kit 02	1057743
1 x AFM60A-S4IB018x12 (1055334), 2 x STE-1204-WE (6048152), 1 x DOS-1204-W (6007303)	AFM60A-S4IB Sales Kit 03	1057733
1 x AFM60A-S4IB018x12 (1055334), 2 x YN2D24-050P-N1XLEAX (2106175), 1 x YG2A14-050UB3XLEAX (2095767)	AFM60A-S4IB Sales Kit 04	1057753

- **Singleturn or multiturn version:** Singleturn
- **Communication interface:** EtherNet/IP™
- **Programmable/configurable:** ✓
- **Specialty:** Sales Kit

Scope of delivery	Type	Part no.
1 x AFS60A-BDIB262144 (1055356), 1 x STE-1204-WE (6048152), 1 x DOS-1204-W (6007303)	AFS60A-BDIB Sales Kit 01	1057719
1 x AFS60A-BDIB262144 (1055356), 1 x YN2D24-050P-N1XLEAX (2106175), 1 x YG2A14-050UB3XLEAX (2095767)	AFS60A-BDIB Sales Kit 02	1057739
1 x AFS60A-BDIB262144 (1055356), 2 x STE-1204-WE (6048152), 1 x DOS-1204-W (6007303)	AFS60A-BDIB Sales Kit 03	1057729
1 x AFS60A-BDIB262144 (1055356), 1 x YN2D24-050P-N1XLEAX (2106175), 1 x YG2A14-050UB3XLEAX (2095767)	AFM60A-BDIB Sales Kit 04	1057749
1 x AFS60A-BEIB262144 (1055358), 1 x STE-1204-WE (6048152), 1 x DOS-1204-W (6007303)	AFS60A-BEIB Sales Kit 01	1057720
1 x AFS60A-BEIB262144 (1055358), 1 x YN2D24-050P-N1XLEAX (2106175), 1 x YG2A14-050UB3XLEAX (2095767)	AFS60A-BEIB Sales Kit 02	1057740
1 x AFS60A-BEIB262144 (1055358), 2 x STE-1204-WE (6048152), 1 x DOS-1204-W (6007303)	AFS60A-BEIB Sales Kit 03	1057730
1 x AFS60A-BEIB262144 (1055358), 2 x YN2D24-050P-N1XLEAX (2106175), 1 x YG2A14-050UB3XLEAX (2095767)	AFM60A-BEIB Sales Kit 04	1057750

Scope of delivery	Type	Part no.
1 x AFS60A-BHIB262144 (1055360), 1 x STE-1204-WE (6048152), 1 x DOS-1204-W (6007303)	AFS60A-BHIB Sales Kit 01	1057721
1 x AFS60A-BHIB262144 (1055360), 1 x YN2D24-050P-N1XLEAX (2106175), 1 x YG2A14-050UB3XLEAX (2095767)	AFS60A-BHIB Sales Kit 02	1057741
1 x AFS60A-BHIB262144 (1055360), 2 x STE-1204-WE (6048152), 1 x DOS-1204-W (6007303)	AFS60A-BHIB Sales Kit 03	1057731
1 x AFS60A-BHIB262144 (1055360), 2 x YN2D24-050P-N1XLEAX (2106175), 1 x YG2A14-050UB3XLEAX (2095767)	AFM60A-BHIB Sales Kit 04	1057751
1 x AFS60A-S1IB262144 (1055362), 1 x STE-1204-WE (6048152), 1 x DOS-1204-W (6007303)	AFS60A-S1IB Sales Kit 01	1057693
1 x AFS60A-S1IB262144 (1055362), 1 x YN2D24-050P-N1XLEAX (2106175), 1 x YG2A14-050UB3XLEAX (2095767)	AFS60A-S1IB Sales Kit 02	1057737
1 x AFS60A-S1IB262144 (1055362), 2 x STE-1204-WE (6048152), 1 x DOS-1204-W (6007303)	AFS60A-S1IB Sales Kit 03	1057727
1 x AFS60A-S1IB262144 (1055362), 2 x YN2D24-050P-N1XLEAX (2106175), 1 x YG2A14-050UB3XLEAX (2095767)	AFM60A-S1IB Sales Kit 04	1057747
1 x AFS60A-S4IB262144 (1055364), 1 x STE-1204-WE (6048152), 1 x DOS-1204-W (6007303)	AFS60A-S4IB Sales Kit 01	1057718
1 x AFS60A-S4IB262144 (1055364), 1 x YN2D24-050P-N1XLEAX (2106175), 1 x YG2A14-050UB3XLEAX (2095767)	AFS60A-S4IB Sales Kit 02	1057738
1 x AFS60A-S4IB262144 (1055364), 2 x STE-1204-WE (6048152), 1 x DOS-1204-W (6007303)	AFS60A-S4IB Sales Kit 03	1057728
1 x AFS60A-S4IB262144 (1055364), 2 x YN2D24-050P-N1XLEAX (2106175), 1 x YG2A14-050UB3XLEAX (2095767)	AFM60A-S4IB Sales Kit 04	1057748

- **Mechanical design:** Solid shaft, Servo flange
- **Singleturn or multiturn version:** Multiturn
- **Communication interface:** PROFINET

Shaft diameter	Connection type	Programmable/configurable	Type	Part no.
6 mm	Male connector, Female connector, 1x, 2x, M12, M12, 4-pin, 4-pin, axial, axial ^{1) 2)}	✓	AFM60A-S1NB018x12	1059040

¹⁾ A-coded.

²⁾ D-coded.

- **Mechanical design:** Solid shaft, Servo flange
- **Singleturn or multiturn version:** Singleturn
- **Communication interface:** PROFINET

Shaft diameter	Connection type	Programmable/configurable	Type	Part no.
6 mm	Male connector, Female connector, 1x, 2x, M12, M12, 4-pin, 4-pin, axial, axial ^{1) 2)}	✓	AFS60A-S1NB262144	1059051

¹⁾ A-coded.

²⁾ D-coded.

- **Mechanical design:** Solid shaft, face mount flange
- **Singleturn or multiturn version:** Multiturn
- **Communication interface:** PROFINET

Shaft diameter	Connection type	Programmable/configurable	Type	Part no.
10 mm	Male connector, Female connector, 1x, 2x, M12, M12, 4-pin, 4-pin, axial, axial ^{1) 2)}	✓	AFM60A-S4NB018x12	1059039

¹⁾ A-coded.

²⁾ D-coded.

- **Mechanical design:** Solid shaft, face mount flange
- **Singleturn or multiturn version:** Singleturn
- **Communication interface:** PROFINET

Shaft diameter	Connection type	Programmable/configurable	Type	Part no.
10 mm	Male connector, Female connector, 1x, 2x, M12, M12, 4-pin, 4-pin, axial, axial ^{1) 2)}	✓	AFS60A-S4NB262144	1059050

¹⁾ A-coded.

²⁾ D-coded.

- **Mechanical design:** blind hollow shaft
- **Singleturn or multiturn version:** Multiturn
- **Communication interface:** PROFINET
- **Connection type:** male connector, Female connector, 1x, 2x, M12, M12, 4-pin, 4-pin, axial, axial (A-coded.) (D-coded.)
- **Programmable/configurable:** ✓

Shaft diameter	Type	Part no.
1/2"	AFM60A-BFNB018x12	1059033
1/4"	AFM60A-BKNB018x12	1059029
10 mm	AFM60A-BDNB018x12	1059035
12 mm	AFM60A-BENB018x12	1059034
14 mm	AFM60A-BGNB018x12	1059032
15 mm	AFM60A-BHNB018x12	1059031
3/8"	AFM60A-BCNB018x12	1059036
8 mm	AFM60A-BBNB018x12	1059038

- **Mechanical design:** blind hollow shaft
- **Singleturn or multiturn version:** Singleturn
- **Communication interface:** PROFINET
- **Connection type:** male connector, Female connector, 1x, 2x, M12, M12, 4-pin, 4-pin, axial, axial (A-coded.) (D-coded.)
- **Programmable/configurable:** ✓

Shaft diameter	Type	Part no.
1/2"	AFS60A-BFNB262144	1059045
1/4"	AFS60A-BKNB262144	1059041
10 mm	AFS60A-BDNB262144	1059047
12 mm	AFS60A-BENB262144	1059046
14 mm	AFS60A-BGNB262144	1059044
15 mm	AFS60A-BHNB262144	1059043
3/8"	AFS60A-BCNB262144	1059048
5/8"	AFS60A-BJNB262144	1059042
8 mm	AFS60A-BBNB262144	1059049

- **Singleturn or multiturn version:** Multiturn
- **Communication interface:** PROFINET
- **Specialty:** Sales Kit

Scope of delivery	Type	Part no.
1 x AFM60A-BDNB018x12 (1059035), 1 x STE-1204-WZ (6048262), 1 x DOS-1204-W (6007303)	AFM60A-BDNB Sales-Kit 01	1059362
1 x AFM60A-BDNB018x12 (1059035), 1 x YN2D24-050P-N1XLEAX (2106175), 1 x YG2A14-050UB3XLEAX (2095767)	AFM60A-BDNB Sales-Kit 02	1059375
1 x AFM60A-BDNB018x12 (1059035), 2 x STE-1204-WZ (6048262), 1 x DOS-1204-W (6007303)	AFM60A-BDNB Sales-Kit 03	1059386
1 x AFM60A-BDNB018x12 (1059035), 2 x YN2D24-050P-N1XLEAX (2106175), 1 x YG2A14-050UB3XLEAX (2095767)	AFM60A-BDNB Sales-Kit 04	1059434
1 x AFM60A-BENB018x12 (1059034), 1 x STE-1204-WZ (6048262), 1 x DOS-1204-W (6007303)	AFM60A-BENB Sales-Kit 01	1059363

Scope of delivery	Type	Part no.
1 x AFM60A-BENB018x12 (1059034), 1 x YN2D24-050P-N1XLEAX (2106175), 1 x YG2A14-050UB3XLEAX (2095767)	AFM60A-BENB Sales-Kit 02	1059376
1 x AFM60A-BENB018x12 (1059034), 2 x STE-1204-WZ (6048262), 1 x DOS-1204-W (6007303)	AFM60A-BENB Sales-Kit 03	1059387
1 x AFM60A-BENB018x12 (1059034), 2 x YN2D24-050P-N1XLEAX (2106175), 1 x YG2A14-050UB3XLEAX (2095767)	AFM60A-BENB Sales-Kit 04	1059437
1 x AFM60A-BHNB018x12 (1059031), 1 x STE-1204-WZ (6048262), 1 x DOS-1204-W (6007303)	AFM60A-BHNB Sales-Kit 01	1059364
1 x AFM60A-BHNB018x12 (1059031), 1 x YN2D24-050P-N1XLEAX (2106175), 1 x YG2A14-050UB3XLEAX (2095767)	AFM60A-BHNB Sales-Kit 02	1059377
1 x AFM60A-BHNB018x12 (1059031), 2 x STE-1204-WZ (6048262), 1 x DOS-1204-W (6007303)	AFM60A-BHNB Sales-Kit 03	1059388
1 x AFM60A-BHNB018x12 (1059031), 2 x YN2D24-050P-N1XLEAX (2106175), 1 x YG2A14-050UB3XLEAX (2095767)	AFM60A-BHNB Sales-Kit 04	1059439
1 x AFM60A-S1NB018x12 (1059040), 1 x STE-1204-WZ (6048262), 1 x DOS-1204-W (6007303)	AFM60A-S1NB Sales-Kit 01	1059360
1 x AFM60A-S1NB018x12 (1059040), 1 x YN2D24-050P-N1XLEAX (2106175), 1 x YG2A14-050UB3XLEAX (2095767)	AFM60A-S1NB Sales-Kit 02	1059372
1 x AFM60A-S1NB018x12 (1059040), 2 x STE-1204-WZ (6048262), 1 x DOS-1204-W (6007303)	AFM60A-S1NB Sales-Kit 03	1059384
1 x AFM60A-S1NB018x12 (1059040), 2 x YN2D24-050P-N1XLEAX (2106175), 1 x YG2A14-050UB3XLEAX (2095767)	AFM60A-S1NB Sales-Kit 04	1059431
1 x AFM60A-S4NB018x12 (1059039), 1 x STE-1204-WZ (6048262), 1 x DOS-1204-W (6007303)	AFM60A-S4NB Sales-Kit 01	1059361
1 x AFM60A-S4NB018x12 (1059039), 1 x YN2D24-050P-N1XLEAX (2106175), 1 x YG2A14-050UB3XLEAX (2095767)	AFM60A-S4NB Sales-Kit 02	1059373
1 x AFM60A-S4NB018x12 (1059039), 2 x STE-1204-WZ (6048262), 1 x DOS-1204-W (6007303)	AFM60A-S4NB Sales-Kit 03	1059385
1 x AFM60A-S4NB018x12 (1059039), 2 x YN2D24-050P-N1XLEAX (2106175), 1 x YG2A14-050UB3XLEAX (2095767)	AFM60A-S4NB Sales-Kit 04	1059433

- **Singleturn or multiturn version:** Singleturn
- **Communication interface:** PROFINET
- **Specialty:** Sales Kit

Scope of delivery	Type	Part no.
1 x AFS60A-BDNB262144 (1059047), 1 x STE-1204-WZ (6048262), 1 x DOS-1204-W (6007303)	AFS60A-BDNB Sales-Kit 01	1059357
1 x AFS60A-BDNB262144 (1059047), 1 x YN2D24-050P-N1XLEAX (2106175), 1 x YG2A14-050UB3XLEAX (2095767)	AFS60A-BDNB Sales-Kit 02	1059368
1 x AFS60A-BDNB262144 (1059047), 2 x STE-1204-WZ (6048262), 1 x DOS-1204-W (6007303)	AFS60A-BDNB Sales-Kit 03	1059381
1 x AFS60A-BDNB262144 (1059047), 2 x YN2D24-050P-N1XLEAX (2106175), 1 x YG2A14-050UB3XLEAX (2095767)	AFS60A-BDNB Sales-Kit 04	1059428
1 x AFS60A-BENB262144 (1059046), 1 x STE-1204-WZ (6048262), 1 x DOS-1204-W (6007303)	AFS60A-BENB Sales-Kit 01	1059358
1 x AFS60A-BENB262144 (1059046), 1 x YN2D24-050P-N1XLEAX (2106175), 1 x YG2A14-050UB3XLEAX (2095767)	AFS60A-BENB Sales-Kit 02	1059369
1 x AFS60A-BENB262144 (1059046), 2 x STE-1204-WZ (6048262), 1 x DOS-1204-W (6007303)	AFS60A-BENB Sales-Kit 03	1059382

Scope of delivery	Type	Part no.
1 x AFS60A-BENB262144 (1059046), 2 x YN2D24-050P-N1XLEAX (2106175), 1 x YG2A14-050UB3XLEAX (2095767)	AFS60A-BENB Sales-Kit 04	1059429
1 x AFS60A-BHNB262144 (1059043), 1 x STE-1204-WZ (6048262), 1 x DOS-1204-W (6007303)	AFS60A-BHNB Sales-Kit 01	1059359
1 x AFS60A-BHNB262144 (1059043), 1 x YN2D24-050P-N1XLEAX (2106175), 1 x YG2A14-050UB3XLEAX (2095767)	AFS60A-BHNB Sales-Kit 02	1059370
1 x AFS60A-BHNB262144 (1059043), 2 x STE-1204-WZ (6048262), 1 x DOS-1204-W (6007303)	AFS60A-BHNB Sales-Kit 03	1059383
1 x AFS60A-BHNB262144 (1059043), 2 x YN2D24-050P-N1XLEAX (2106175), 1 x YG2A14-050UB3XLEAX (2095767)	AFS60A-BHNB Sales-Kit 04	1059430
1 x AFS60A-S1NB262144 (1059051), 1 x STE-1204-WZ (6048262), 1 x DOS-1204-W (6007303)	AFS60A-S1NB Sales-Kit 01	1059352
1 x AFS60A-S1NB262144 (1059051), 1 x YN2D24-050P-N1XLEAX (2106175), 1 x YG2A14-050UB3XLEAX (2095767)	AFS60A-S1NB Sales-Kit 02	1059365
1 x AFS60A-S1NB262144 (1059051), 2 x STE-1204-WZ (6048262), 1 x DOS-1204-W (6007303)	AFS60A-S1NB Sales-Kit 03	1059379
1 x AFS60A-S1NB262144 (1059051), 2 x YN2D24-050P-N1XLEAX (2106175), 1 x YG2A14-050UB3XLEAX (2095767)	AFS60A-S1NB Sales-Kit 04	1059426
1 x AFS60A-S4NB262144 (1059050), 1 x STE-1204-WZ (6048262), 1 x DOS-1204-W (6007303)	AFS60A-S4NB Sales-Kit 01	1059356
1 x AFS60A-S4NB262144 (1059050), 1 x YN2D24-050P-N1XLEAX (2106175), 1 x YG2A14-050UB3XLEAX (2095767)	AFS60A-S4NB Sales-Kit 02	1059366
1 x AFS60A-S4NB262144 (1059050), 2 x STE-1204-WZ (6048262), 1 x DOS-1204-W (6007303)	AFS60A-S4NB Sales-Kit 03	1059380
1 x AFS60A-S4NB262144 (1059050), 2 x YN2D24-050P-N1XLEAX (2106175), 1 x YG2A14-050UB3XLEAX (2095767)	AFS60A-S4NB Sales-Kit 04	1059427

SICK AT A GLANCE

SICK is one of the leading manufacturers of intelligent sensors and sensor solutions for industrial applications. A unique range of products and services creates the perfect basis for controlling processes securely and efficiently, protecting individuals from accidents and preventing damage to the environment.

We have extensive experience in a wide range of industries and understand their processes and requirements. With intelligent sensors, we can deliver exactly what our customers need. In application centers in Europe, Asia and North America, system solutions are tested and optimized in accordance with customer specifications. All this makes us a reliable supplier and development partner.

Comprehensive services complete our offering: SICK LifeTime Services provide support throughout the machine life cycle and ensure safety and productivity.

For us, that is “Sensor Intelligence.”

WORLDWIDE PRESENCE:

Contacts and other locations –www.sick.com