



AFS/AFM60S Pro

Safety encoder for safe positioning, optionally programmable

SICK
Sensor Intelligence.

Advantages



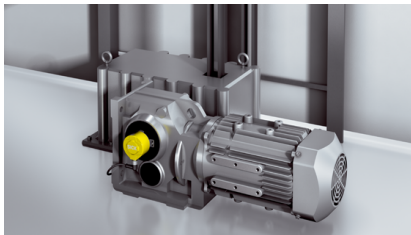
Certified safety product

The AFS/AFM60S Pro safety encoder stands for functional safety and fulfills very high safety requirements. The encoder is certified for applications up to SIL 3 / PL 3 and supports safety functions that conform to IEC 61800-5-2. The AFS/AFM60S Pro therefore guarantees safe positioning in stationary and mobile applications.

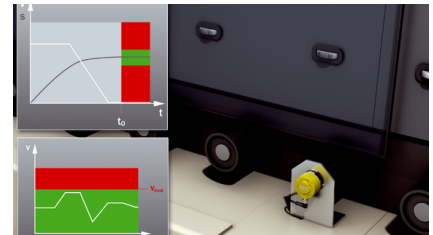
One thing is clear: The AFS/AFM60S Pro is safe.



Certified for applications up to SIL 3 (IEC 61508), SILCL 3 (EN 62061) and PL e (EN ISO 13849)



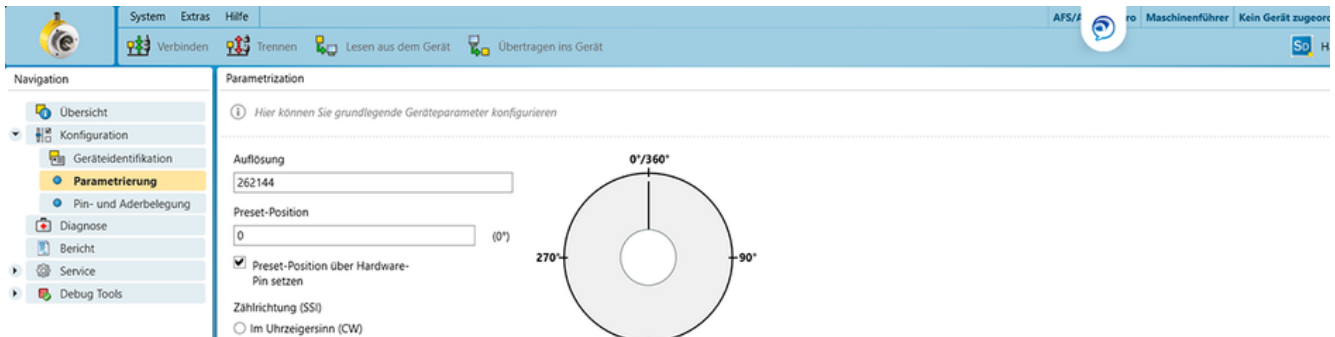
Simple safety engineering and simple encoder installation at consistently high machine and system availability



Supports the safety functions of drives in accordance with IEC 61800-5-2



Simplify the certification process for your system: The AFS/AFM60S Pro has already been certified by an external testing body and can be integrated quickly into your system.



Programmable and flexible

The AFS/AFM60S Pro allows for flexible integration into various controls with its SSI and Sin/Cos interface. It therefore has the decisive advantage of individualized adjustment of different parameters, e.g. encoder resolution and counting direction. Different mechanical variants and types of connector also increase the flexibility of the encoder.

Designed for different applications



Flexible implementation and adaptation options for new applications



The integrated error memory saves important ambient data and ensures high transparency of ambient and encoder functions



The compact design opens up flexible installation options – even with limited installation space



Stay flexible: The programmable AFS/AFM60S Pro offers different configuration and connection options and a wide range of uses.



Extreme mechanical reliability

The AFS/AFM60S Pro not only stands out due to its high safety integrity level. Its mechanical load capability and reliability also set standards, which has been verified by a successful examination using the latest test principles of the Institute for Occupational Safety and Health of the German Social Accident Insurance Association (IFA). The safety encoder therefore stands for very high quality and precision in every detail.

Tested in accordance with the latest test principles



Meets the latest requirements on the safety of encoders (SR) in accordance with IEC 61800-5-3; verified by the Institute for Occupational Safety and Health of the German Social Accident Insurance (IFA)



Reliable fault exclusion thanks to safety clamping ring with positive and non-positive connections



Mechanical reliability – solid shaft with flat or with feather key groove



You can count on it: The AFS/AFM60S Pro stands for certified electrical and mechanical safety.



Complete package is easy to integrate

The AFS/AFM60S Pro can be implemented into systems quickly, easily and inexpensively. It makes it possible to realize safety functions for stationary and mobile safety applications in no time, especially in combination with other safety products from SICK. Thanks to the plug and play principle of the encoder, this is all very simple and offers the advantage of aligned safety products, for example for the implementation of complete solutions in the field of Safe Motion Control.

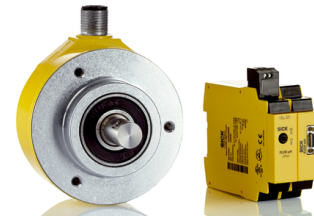
A complete safety solution from a single source



SICK stands for many years of experience in safety and drive technology and world-wide service



Complete Safe Motion Control solutions from SICK



Perfectly aligned: The AFS/AFM60S Pro combined with the Drive Monitor FX3-MOC motion control module



Save time and money with the simple plug and play implementation of the AFS/AFM60S Pro and the complete solutions from SICK.

Safety encoders such as the AFS/AFM60S Pro play an important role when integrating innovative safety concepts for safe movement monitoring of machines and systems. For instance, the encoder is ideally aligned to the Flexi Soft safety controller, and the two devices create a powerful safety solution when used together: Safe Motion Control from SICK. It enables a very high level of safety and increases the efficiency of machines and systems at the same time.

How does Safe Motion Control achieve this combination of safety and efficiency? Precise differentiation of dangerous and safe machine movements at all times: The Flexi Soft safety controller monitors sensor signals and makes it possible to assess a dangerous state. If no hazard exists, the operator is permitted to intervene in the machine operation even during the running process – the process is not interrupted. Unnecessary machine stops and downtime are reduced in this way, increasing productivity.

Creating safe productivity – without interruptions



Safe Motion Control – safe productivity for stationary and mobile applications

Safe Motion Control offers a very high level of personal safety and at the same time ensures consistent performance of machines and systems. Safe Motion Control is therefore an innovative and powerful solution - for stationary and mobile applications alike. The operator can insert material into the machine by monitoring and reducing the speed of, for example, a metal press. It is no longer necessary to completely shut off the machine. Thanks to Safe Motion Control, automated guided vehicle systems (AGV systems) adjust their speed when persons are registered in the hazardous area of the system, thereby enabling effective use of the available space.



Productivity for a safe future

Safe Motion Control proves that the safety of machines, systems and persons does not automatically mean machine or system downtime. Thanks to Safe Motion Control, production or logistics processes can be monitored and controlled safely and permanently. The perfect combination, the certified AFS/AFM60S Pro safety encoder and the Drive Monitor FX3-MOC motion control module, ensures complete protection of machine or systems as well as the safety of persons. And all this with consistent machine and system availability and productive operation without interruption. Creating safe productivity. Now.



Technical data overview

Safety integrity level	SIL 3 (IEC 61508, IEC 61800-5-3) ¹⁾								
Performance level	PL e (EN ISO 13849-1) ¹⁾								
Category	3 (EN ISO 13849-1) 4 (EN ISO 13849-1)								
Encoder design	Multiturn / Singleturn (depending on type)								
Shaft type	Solid shaft, Servo flange Solid shaft, face mount flange Blind hollow shaft Through hollow shaft								
Shaft diameter	<table border="0"> <tr> <td style="padding-right: 20px;">Solid shaft, Servo flange</td> <td>6 mm With face 6 mm with feather key</td> </tr> <tr> <td style="padding-right: 20px;">Solid shaft, face mount flange</td> <td>10 mm With face 10 mm with feather key</td> </tr> <tr> <td style="padding-right: 20px;">Blind hollow shaft</td> <td>6 mm with feather key groove ²⁾ 8 mm with feather key groove ²⁾ 3/8" with feather key groove ²⁾ 10 mm with feather key groove ²⁾ 12 mm with feather key groove ²⁾ 1/2" with feather key groove ²⁾ 14 mm with feather key groove ²⁾ 15 mm with feather key groove ²⁾ 5/8" with feather key groove ²⁾</td> </tr> <tr> <td style="padding-right: 20px;">Through hollow shaft</td> <td>6 mm with feather key groove ²⁾ 8 mm with feather key groove ²⁾ 3/8" with feather key groove ²⁾ 10 mm with feather key groove ²⁾ 12 mm with feather key groove ²⁾ 1/2" with feather key groove ²⁾ 14 mm with feather key groove ²⁾ 15 mm with feather key groove ²⁾ 5/8" with feather key groove ²⁾</td> </tr> </table>	Solid shaft, Servo flange	6 mm With face 6 mm with feather key	Solid shaft, face mount flange	10 mm With face 10 mm with feather key	Blind hollow shaft	6 mm with feather key groove ²⁾ 8 mm with feather key groove ²⁾ 3/8" with feather key groove ²⁾ 10 mm with feather key groove ²⁾ 12 mm with feather key groove ²⁾ 1/2" with feather key groove ²⁾ 14 mm with feather key groove ²⁾ 15 mm with feather key groove ²⁾ 5/8" with feather key groove ²⁾	Through hollow shaft	6 mm with feather key groove ²⁾ 8 mm with feather key groove ²⁾ 3/8" with feather key groove ²⁾ 10 mm with feather key groove ²⁾ 12 mm with feather key groove ²⁾ 1/2" with feather key groove ²⁾ 14 mm with feather key groove ²⁾ 15 mm with feather key groove ²⁾ 5/8" with feather key groove ²⁾
Solid shaft, Servo flange	6 mm With face 6 mm with feather key								
Solid shaft, face mount flange	10 mm With face 10 mm with feather key								
Blind hollow shaft	6 mm with feather key groove ²⁾ 8 mm with feather key groove ²⁾ 3/8" with feather key groove ²⁾ 10 mm with feather key groove ²⁾ 12 mm with feather key groove ²⁾ 1/2" with feather key groove ²⁾ 14 mm with feather key groove ²⁾ 15 mm with feather key groove ²⁾ 5/8" with feather key groove ²⁾								
Through hollow shaft	6 mm with feather key groove ²⁾ 8 mm with feather key groove ²⁾ 3/8" with feather key groove ²⁾ 10 mm with feather key groove ²⁾ 12 mm with feather key groove ²⁾ 1/2" with feather key groove ²⁾ 14 mm with feather key groove ²⁾ 15 mm with feather key groove ²⁾ 5/8" with feather key groove ²⁾								
Connection type	Male connector, M23, 12-pin, radial Male connector, M23, 12-pin, axial Male connector, M12, 12-pin, radial Male connector, M12, 12-pin, axial Cable, 12-wire, radial Cable, 12-wire, axial								
Communication interface	SSI								
Number of steps per revolution (max. resolution)	<table border="0"> <tr> <td style="padding-right: 20px;">SSI, SSI + Sin/Cos, programmable</td> <td>262,144 (18 bit) ³⁾</td> </tr> <tr> <td style="padding-right: 20px;">SSI, SSI + Sin/Cos, non programmable</td> <td>262,144 (18 bit) ³⁾ 1,024 (10 bit) ³⁾ 32,768 (15 bit) ³⁾</td> </tr> </table>	SSI, SSI + Sin/Cos, programmable	262,144 (18 bit) ³⁾	SSI, SSI + Sin/Cos, non programmable	262,144 (18 bit) ³⁾ 1,024 (10 bit) ³⁾ 32,768 (15 bit) ³⁾				
SSI, SSI + Sin/Cos, programmable	262,144 (18 bit) ³⁾								
SSI, SSI + Sin/Cos, non programmable	262,144 (18 bit) ³⁾ 1,024 (10 bit) ³⁾ 32,768 (15 bit) ³⁾								

¹⁾ For more detailed information on the exact configuration of your machine/unit, please consult your relevant SICK branch office.

²⁾ With feather key groove.

³⁾ Step number per rotation can be parameterized: Singleturn encoder 4 ... 262.144; multiturn encoder 4 ... 262.144 binary (2² ... 2¹⁸).

⁴⁾ At operating temperature measuring point.

	4,096 (12 bit) ³⁾
Max. resolution (number of steps per revolution x number of revolutions)	
SSI, SSI + Sin/Cos, programmable	18 bit x 12 bit (262,144 x 4,096) 15 bit x 12 bit (32,768 x 4,096) 14 bit x 12 bit (16,384 x 4,096)
SSI, SSI + Sin/Cos, non programmable	18 bit x 12 bit (262,144 x 4,096) 12 bit x 12 bit (4,096 x 4,096) 13 bit x 12 bit (8,192 x 4,096) 4 bit x 12 bit (16 x 4,096)
Operating temperature range	-30 °C ... +95 °C ⁴⁾ (depending on type)
Enclosure rating	IP65 (IEC 60529)

1) For more detailed information on the exact configuration of your machine/unit, please consult your relevant SICK branch office.

2) With feather key groove.

3) Step number per rotation can be parameterized: Singleturn encoder 4 ... 262.144; multiturn encoder 4 ... 262.144 binary ($2^2 \dots 2^{18}$).

4) At operating temperature measuring point.

Product description

The AFS/AFM60S Pro is an absolute encoder for functional safety. It meets the very stringent test criteria according to IEC 61800-5-3 and is a certified safety product up to SIL3/PL e. The absolute encoder supports the safety functions in accordance with IEC 61800-5-2 and impresses in particular with its safe positioning function. Thanks to the high enclosure rating and large temperature range, the AFS/AFM60S Pro can be used in harsh environments. With its SSI and sin/cos interface, it can be easily integrated into a range of different controls. In doing so, singleturn resolution, counting direction and other parameters can be adapted individually. The integrated error memory detects important ambient data which provides support during installation and maintenance.

At a glance

- Certified up to SIL3 (IEC 61508, IEC 61800- 5-3), PL e (EN ISO 13849)
- Single- or multiturn encoder with SSI and sin/cos interface
- Programmable, integrated error memory
- Solid or hollow shaft encoder, mounting with key
- Cable connection, M23 or M12 male connector
- Operating temperature range: -30 °C ... +95 °C

Your benefits

- Certified safety product that ensures the best possible protection for persons, machinery, and systems
- Easy handling of safety functions with complete solutions from SICK: Safe positioning with the AFS/AFM60S Pro and the FX3-MOC1 motion control module of the Flexi Soft safety controller
- Positive and non-positive connections for mechanical reliability
- Safety into the future: Meets the safety requirements on encoders (SR) in accordance with IEC 61800-5-3
- Different configuration and connection options for high levels of flexibility and straightforward implementation
- Suitable for applications with small installation spaces

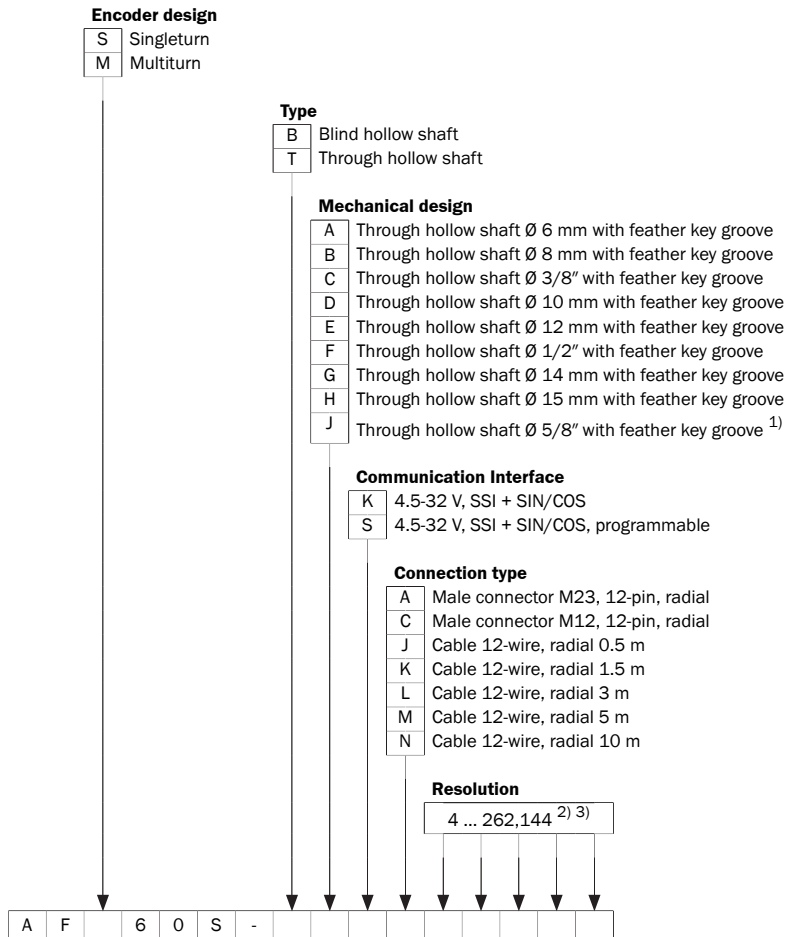
Fields of application

- Measurement of position, speed and direction of rotation in various industries in which everything depends on safe position and movement monitoring: Mobile automation, mechanical construction, wind energy, storage and conveyors

Type code

Other models and accessories → www.sick.com/AFS_AFM60S_Pro

Type code

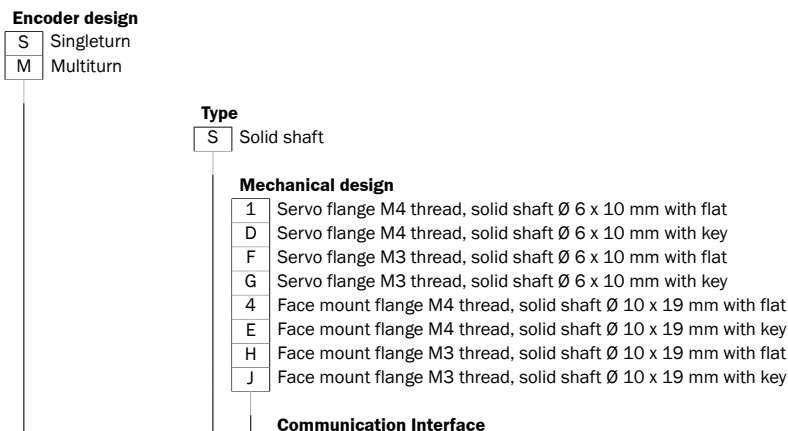


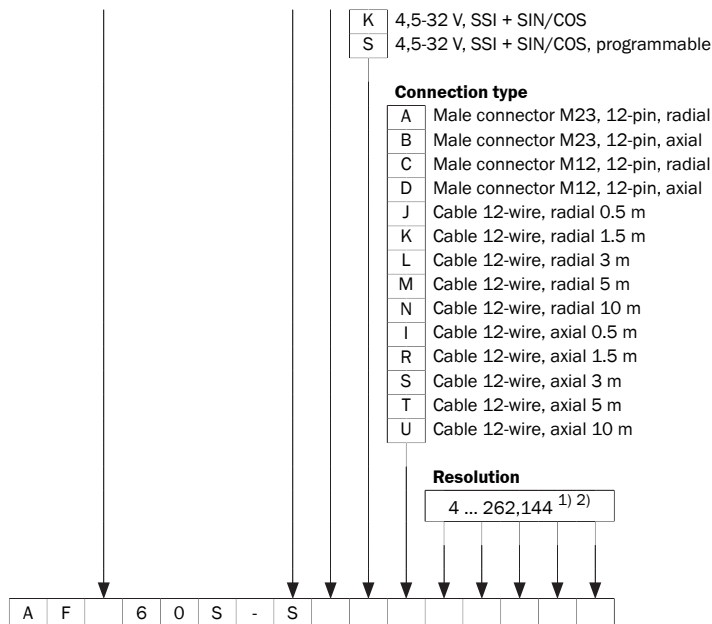
¹⁾ Only for singleturn.

²⁾ Number of steps per revolution, depending on type.

³⁾ Number of steps per revolution parameterizable (communication interface "S"): Singleturn encoder 4 ... 262,144; multiturn encoder 4 ... 262,144 binary (2² ... 2¹⁸). Programmable via programming tool and configuration software "Safety Designer" (www.sick.de). Number of steps per revolution non-programmable devices: see below. Other numbers of steps possible on request.

Type code





¹⁾ Number of steps per revolution, depending on type.

²⁾ Number of steps per revolution parameterizable (communication interface "S"): Singleturn encoder 4 ... 262,144; multiturn encoder 4 ... 262,144 binary ($2^2 \dots 2^{18}$). Programmable via programming tool and configuration software "Safety Designer" (www.sick.de). Number of steps per revolution non-programmable devices: see below. Other numbers of steps possible on request.

Ordering information

Other models and accessories → www.sick.com/AFS_AFM60S_Pro

- **Safety integrity level:** SIL 3 (IEC 61508, IEC 61800-5-3)
- **Performance level:** PL e (EN ISO 13849-1) (For more detailed information on the exact configuration of your machine/unit, please consult your relevant SICK branch office.)
- **Mechanical design:** Solid shaft, Servo flange
- **Communication interface:** SSI
- **Communication Interface detail:** SSI + Sin/Cos
- **Shaft diameter:** 6 mm

Singleturn or multiturn version	Connection type	Programmable/configurable	Type	Part no.
Multiturn	Cable, 12-wire, axial, 0.5 m	✓	AFM60S-S1SI262144	On request
			AFM60S-SDSI262144	On request

Singleturn or multiturn version	Connection type	Programmable/configurable	Type	Part no.	
		-	AFM60S-SFSI262144	On request	
			AFM60S-SGSI262144	On request	
			AFM60S-S1KI262144	On request	
			AFM60S-SDKI262144	On request	
			AFM60S-SFKI262144	On request	
			AFM60S-SGKI262144	On request	
		Cable, 12-wire, axial, 1.5 m	✓	AFM60S-S1SR262144	1099029
				AFM60S-SDSR262144	On request
				AFM60S-SFSR262144	On request
				AFM60S-SGSR262144	On request
	-	AFM60S-S1KR262144	On request		
		AFM60S-SD-KR262144	On request		
		AFM60S-SFKR262144	On request		
		AFM60S-SGKR262144	On request		
	Cable, 12-wire, axial, 10 m	✓	AFM60S-S1SU262144	On request	
			AFM60S-SDSU262144	On request	
			AFM60S-SFSU262144	On request	
			AFM60S-SGSU262144	On request	
		-	AFM60S-S1KU262144	On request	
			AFM60S-SD-KU262144	On request	
Multiturn	Cable, 12-wire, axial, 10 m	-	AFM60S-SFKU262144	On request	
			AFM60S-SGKU262144	On request	
	Cable, 12-wire, axial, 3 m	✓	AFM60S-S1SS262144	On request	
			AFM60S-SDSS262144	On request	
			AFM60S-SFSS262144	On request	
			AFM60S-SGSS262144	On request	
		-	AFM60S-S1KS262144	On request	
			AFM60S-SDKS262144	On request	
			AFM60S-SFKS262144	On request	
			AFM60S-SGKS262144	On request	

Singleturn or multiturn version	Connection type	Programmable/configurable	Type	Part no.
	Cable, 12-wire, axial, 5 m	✓	AFM60S-S1ST262144	On request
			AFM60S-SDST262144	On request
			AFM60S-SFST262144	On request
			AFM60S-SGST262144	On request
		-	AFM60S-S1KT262144	On request
			AFM60S-SDKT262144	On request
			AFM60S-SFKT262144	On request
			AFM60S-SGKT262144	On request
	Cable, 12-wire, radial, 0.5 m	✓	AFM60S-S1SJ262144	On request
			AFM60S-SDSJ262144	On request
			AFM60S-SFSJ262144	On request
			AFM60S-SGSJ262144	On request
		-	AFM60S-S1KJ262144	On request
			AFM60S-SDKJ262144	On request
			AFM60S-SFKJ262144	On request
			AFM60S-SGKJ262144	On request
	Cable, 12-wire, radial, 1.5 m	✓	AFM60S-S1SK262144	1096660
			AFM60S-SDSK262144	1087254
			AFM60S-SFSK262144	On request
			AFM60S-SGSK262144	On request
Multiturn	Cable, 12-wire, radial, 1.5 m	-	AFM60S-S1KK262144	On request
			AFM60S-SD-KK262144	On request
			AFM60S-SFKK262144	On request
			AFM60S-SGKK262144	On request
	Cable, 12-wire, radial, 10 m	✓	AFM60S-S1SN262144	1121363
			AFM60S-SDSN262144	1133237
			AFM60S-SFSN262144	On request
			AFM60S-SGSN262144	On request
		-	AFM60S-S1KN262144	1124903
			AFM60S-SD-KN262144	On request

Singleturn or multiturn version	Connection type	Programmable/configurable	Type	Part no.	
			AFM60S-SFKN262144	On request	
			AFM60S-SGKN262144	On request	
	Cable, 12-wire, radial, 3 m	✓		AFM60S-S1SL262144	On request
				AFM60S-SDSL262144	On request
				AFM60S-SFSL262144	On request
				AFM60S-SGSL262144	On request
			-	AFM60S-S1KL262144	On request
				AFM60S-SDKL262144	On request
				AFM60S-SFKL262144	1119066
				AFM60S-SGKL262144	On request
	Cable, 12-wire, radial, 5 m	✓		AFM60S-S1SM262144	On request
				AFM60S-SDSM262144	On request
				AFM60S-SFSM262144	On request
				AFM60S-SGSM262144	On request
			-	AFM60S-S1KM262144	On request
				AFM60S-SDKM262144	On request
				AFM60S-SFKM262144	On request
				AFM60S-SGKM262144	On request
	Male connector, M12, 12-pin, axial	✓		AFM60S-S1SD262144	1115907
				AFM60S-SDSD262144	On request
Multiturn	Male connector, M12, 12-pin, axial	✓	AFM60S-SFSD262144	On request	
			AFM60S-SGSD262144	On request	
			-	AFM60S-S1KD262144	On request
				AFM60S-SDKD262144	On request
				AFM60S-SFKD262144	On request
				AFM60S-SGKD262144	On request
	Male connector, M12, 12-pin, radial	✓		AFM60S-S1SC262144	1114167
				AFM60S-SDSC262144	1133238
				AFM60S-SFSC262144	On request
				AFM60S-SGSC262144	On request

Singleturn or multiturn version	Connection type	Programmable/configurable	Type	Part no.				
		-	AFM60S-S1KC262144	1091563				
			AFM60S-SDKC262144	On request				
			AFM60S-SFKC262144	On request				
			AFM60S-SGKC262144	On request				
	Male connector, M23, 12-pin, axial	✓		AFM60S-S1SB262144	On request			
				AFM60S-SDSB262144	On request			
				AFM60S-SFSB262144	On request			
				AFM60S-SGSB262144	On request			
		-		AFM60S-S1KB262144	On request			
				AFM60S-SDKB262144	On request			
				AFM60S-SFKB262144	On request			
				AFM60S-SGKB262144	On request			
				Male connector, M23, 12-pin, radial	✓		AFM60S-S1SA262144	1088780
							AFM60S-SDSA262144	On request
	AFM60S-SFSA262144	On request						
	AFM60S-SGSA262144	On request						
	-		AFM60S-S1KA262144		1116706			
			AFM60S-SDKA262144		On request			
			AFM60S-SFKA262144	On request				
			AFM60S-SGKA262144	On request				
Singleturn	Cable, 12-wire, axial, 0.5 m	✓	AFS60S-S1SI262144	On request				
			AFS60S-SDSI262144	On request				

Singleturn or multiturn version	Connection type	Programmable/configurable	Type	Part no.	
		-	AFS60S-SFSI262144	On request	
			AFS60S-SGSI262144	On request	
			AFS60S-S1KI262144	On request	
			AFS60S-SDKI262144	On request	
			AFS60S-SFKI262144	On request	
			AFS60S-SGKI262144	On request	
	Cable, 12-wire, axial, 1.5 m	✓		AFS60S-S1SR262144	On request
				AFS60S-SDSR262144	On request
				AFS60S-SFSR262144	On request
				AFS60S-SGSR262144	On request
		-		AFS60S-S1KR262144	On request
				AFS60S-SDKR262144	On request
				AFS60S-SFKR262144	On request
				AFS60S-SGKR262144	On request
	Cable, 12-wire, axial, 10 m	✓		AFS60S-S1SU262144	On request
				AFS60S-SDSU262144	On request
				AFS60S-SFSU262144	On request
				AFS60S-SGSU262144	On request
		-		AFS60S-S1KU262144	On request
				AFS60S-SDKU262144	On request
AFS60S-SFKU262144				On request	
AFS60S-SGKU262144				On request	
Singleturn	Cable, 12-wire, axial, 10 m	-	AFS60S-SFKU262144	On request	
			AFS60S-SGKU262144	On request	
	Cable, 12-wire, axial, 3 m	✓		AFS60S-S1SS262144	On request
				AFS60S-SDSS262144	On request
				AFS60S-SFSS262144	On request
				AFS60S-SGSS262144	On request
		-		AFS60S-S1KS262144	On request
				AFS60S-SDKS262144	On request
				AFS60S-SFKS262144	On request
				AFS60S-SGKS262144	On request

Singleturn or multiturn version	Connection type	Programmable/configurable	Type	Part no.
	Cable, 12-wire, axial, 5 m	✓	AFS60S-S1ST262144	On request
			AFS60S-SDST262144	On request
			AFS60S-SFST262144	On request
			AFS60S-SGST262144	On request
		-	AFS60S-S1KT262144	On request
			AFS60S-SDKT262144	On request
			AFS60S-SFKT262144	On request
			AFS60S-SGKT262144	On request
	Cable, 12-wire, radial, 0.5 m	✓	AFS60S-S1SJ262144	On request
			AFS60S-SDSJ262144	On request
			AFS60S-SFSJ262144	On request
			AFS60S-SGSJ262144	On request
		-	AFS60S-S1KJ262144	On request
			AFS60S-SDKJ262144	On request
			AFS60S-SFKJ262144	On request
			AFS60S-SGKJ262144	On request
Cable, 12-wire, radial, 1.5 m	✓	AFS60S-S1SK262144	On request	
		AFS60S-SDSK262144	On request	
		AFS60S-SFSK262144	On request	
		AFS60S-SGSK262144	On request	
Singleturn	Cable, 12-wire, radial, 1.5 m	-	AFS60S-S1KK262144	On request
			AFS60S-SDKK262144	On request
			AFS60S-SFKK262144	On request
			AFS60S-SGKK262144	On request
	Cable, 12-wire, radial, 10 m	✓	AFS60S-S1SN262144	On request
			AFS60S-SDSN262144	On request
			AFS60S-SFSN262144	On request
			AFS60S-SGSN262144	On request
		-	AFS60S-S1KN262144	On request
			AFS60S-SDKN262144	On request

Singleturn or multiturn version	Connection type	Programmable/configurable	Type	Part no.	
	Cable, 12-wire, radial, 3 m	✓	AFS60S-SFKN262144	On request	
			AFS60S-SGKN262144	On request	
			AFS60S-S1SL262144	On request	
			AFS60S-SDSL262144	On request	
			AFS60S-SFSL262144	On request	
		AFS60S-SGSL262144	On request		
		-	AFS60S-S1KL262144	1120448	
			AFS60S-SDKL262144	On request	
			AFS60S-SFKL262144	On request	
			AFS60S-SGKL262144	On request	
	Cable, 12-wire, radial, 5 m		✓	AFS60S-S1SM262144	On request
		AFS60S-SDSM262144		On request	
		AFS60S-SFSM262144		On request	
		AFS60S-SGSM262144		On request	
		-	AFS60S-S1KM262144	On request	
			AFS60S-SDKM262144	On request	
			AFS60S-SFKM262144	On request	
			AFS60S-SGKM262144	On request	
	Male connector, M12, 12-pin, axial	✓	AFS60S-S1SD262144	On request	
			AFS60S-SDSD262144	On request	
Singleturn	Male connector, M12, 12-pin, axial	✓	AFS60S-SFSD262144	On request	
			AFS60S-SGSD262144	On request	
		-	AFS60S-S1KD262144	On request	
			AFS60S-SDKD262144	On request	
			AFS60S-SFKD262144	On request	
			AFS60S-SGKD262144	On request	
			Male connector, M12, 12-pin, radial	✓	AFS60S-S1SC262144
	AFS60S-SDSC262144	On request			
	AFS60S-SFSC262144	On request			
				AFS60S-SGSC262144	On request

Singleturn or multiturn version	Connection type	Programmable/configurable	Type	Part no.	
		-	AFS60S-S1KC262144	1146874	
			AFS60S-SDKC262144	On request	
			AFS60S-SFKC262144	On request	
			AFS60S-SGKC262144	On request	
	Male connector, M23, 12-pin, axial	✓		AFS60S-S1SB262144	1096662
				AFS60S-SDSB262144	On request
				AFS60S-SFSB262144	On request
				AFS60S-SGSB262144	On request
		-		AFS60S-S1KB262144	On request
				AFS60S-SDKB262144	On request
				AFS60S-SFKB262144	On request
				AFS60S-SGKB262144	On request
	Male connector, M23, 12-pin, radial	✓		AFS60S-S1SA262144	1096663
				AFS60S-SDSA262144	1096661
				AFS60S-SFSA262144	On request
				AFS60S-SGSA262144	On request
		-		AFS60S-S1KA262144	On request
				AFS60S-SDKA262144	1085625
				AFS60S-SFKA262144	On request
				AFS60S-SGKA262144	On request

- **Safety integrity level:** SIL 3 (IEC 61508, IEC 61800-5-3)
- **Performance level:** PL e (EN ISO 13849-1) (For more detailed information on the exact configuration of your machine/unit, please consult your relevant SICK branch office.)
- **Mechanical design:** Solid shaft, face mount flange
- **Communication interface:** SSI
- **Communication Interface detail:** SSI + Sin/Cos
- **Shaft diameter:** 10 mm

Singleturn or multiturn version	Connection type	Programmable/configurable	Type	Part no.	
Multiturn	Cable, 12-wire, axial, 0.5 m	✓	AFM60S-S4SI262144	On request	
			AFM60S-SESI262144	On request	
			AFM60S-SHSI262144	On request	
			AFM60S-SJSI262144	On request	
		-		AFM60S-S4KI262144	On request
				AFM60S-SEKI262144	On request

Singleturn or multiturn version	Connection type	Programmable/configurable	Type	Part no.	
	Cable, 12-wire, axial, 1.5 m	✓	AFM60S-SHKI262144	On request	
			AFM60S-SJKI262144	On request	
			AFM60S-S4SR262144	1096658	
			AFM60S-SESR262144	On request	
			AFM60S-SHSR262144	On request	
			AFM60S-SJSR262144	On request	
			-	AFM60S-S4KR262144	On request
				AFM60S-SEKR262144	On request
				AFM60S-SHKR262144	On request
				AFM60S-SJKR262144	On request
	Cable, 12-wire, axial, 10 m	✓	AFM60S-S4SU262144	On request	
			AFM60S-SESU262144	On request	
			AFM60S-SHSU262144	On request	
			AFM60S-SJSU262144	On request	
			-	AFM60S-S4KU262144	On request
				AFM60S-SEKU262144	On request
				AFM60S-SHKU262144	On request
				AFM60S-SJKU262144	On request
	Cable, 12-wire, axial, 3 m	✓	AFM60S-S4SS262144	1127188	
			AFM60S-SESS262144	On request	
Multiturn	Cable, 12-wire, axial, 3 m	✓	AFM60S-SHSS262144	On request	
			AFM60S-SJSS262144	On request	
			-	AFM60S-S4KS262144	On request
				AFM60S-S4KS4096	1127189
				AFM60S-SEKS262144	On request
				AFM60S-SHKS262144	On request
				AFM60S-SJKS262144	On request
	Cable, 12-wire, axial, 5 m	✓	AFM60S-S4ST262144	On request	
			AFM60S-SEST262144	On request	
			AFM60S-SHST262144	On request	

Singleturn or multiturn version	Connection type	Programmable/configurable	Type	Part no.	
		-	AFM60S-SJST262144	On request	
			AFM60S-S4KT262144	On request	
			AFM60S-SEKT262144	On request	
			AFM60S-SHKT262144	On request	
			AFM60S-SJKT262144	On request	
	Cable, 12-wire, radial, 0.5 m	✓		AFM60S-S4SJ262144	On request
				AFM60S-SESJ262144	On request
				AFM60S-SHSJ262144	On request
				AFM60S-SJSJ262144	On request
		-		AFM60S-S4KJ262144	On request
				AFM60S-SEKJ262144	On request
				AFM60S-SHKJ262144	On request
				AFM60S-SJKJ262144	On request
	Cable, 12-wire, radial, 1.5 m	✓		AFM60S-S4SK032768	1119128
				AFM60S-S4SK262144	1088779
				AFM60S-SESK262144	1096657
				AFM60S-SHSK262144	On request
				AFM60S-SJSK262144	On request
		-		AFM60S-S4KK262144	On request
				AFM60S-SEKK262144	On request
Multiturn	Cable, 12-wire, radial, 1.5 m	-	AFM60S-SHKK262144	On request	
			AFM60S-SJKK262144	On request	
	Cable, 12-wire, radial, 10 m	✓		AFM60S-S4SN262144	On request
				AFM60S-SESN262144	On request
				AFM60S-SHSN262144	On request
		-		AFM60S-SJSN262144	On request
				AFM60S-S4KN262144	On request
				AFM60S-SEKN262144	On request
				AFM60S-SHKN262144	On request
				AFM60S-SJKN262144	On request

Singleturn or multiturn version	Connection type	Programmable/configurable	Type	Part no.
	Cable, 12-wire, radial, 3 m	✓	AFM60S-S4SL262144	On request
			AFM60S-SESL262144	On request
			AFM60S-SHSL262144	On request
			AFM60S-SJSL262144	On request
		-	AFM60S-S4KL262144	1118280
			AFM60S-SEKL262144	On request
			AFM60S-SHKL262144	1120449
			AFM60S-SJKL262144	On request
	Cable, 12-wire, radial, 5 m	✓	AFM60S-S4SM262144	On request
			AFM60S-SESM262144	On request
			AFM60S-SHSM262144	On request
			AFM60S-SJSM262144	1146621
		-	AFM60S-S4KM262144	On request
			AFM60S-SEKM262144	On request
			AFM60S-SHKM262144	1114871
			AFM60S-SJKM262144	On request
	Male connector, M12, 12-pin, axial	✓	AFM60S-S4SD262144	1118366
			AFM60S-SESD262144	1116207
			AFM60S-SHSD262144	On request
			AFM60S-SJSD262144	On request
Multiturn	Male connector, M12, 12-pin, axial	-	AFM60S-S4KD262144	On request
			AFM60S-SEKD262144	1115931
			AFM60S-SHKD262144	On request
			AFM60S-SJKD262144	On request
	Male connector, M12, 12-pin, radial	✓	AFM60S-S4SC262144	1104950
			AFM60S-SESC262144	1110357
			AFM60S-SHSC262144	On request
			AFM60S-SJSC262144	On request
		-	AFM60S-S4KC262144	1091564
			AFM60S-SEKC262144	1114826

Singleturn or multiturn version	Connection type	Programmable/configurable	Type	Part no.
	Male connector, M23, 12-pin, axial		AFM60S-SHKC262144	On request
			AFM60S-SJKC262144	On request
		✓	AFM60S-S4SB262144	On request
			AFM60S-SESB262144	1085642
			AFM60S-SHSB262144	On request
			AFM60S-SJSB262144	On request
			AFM60S-S4KB262144	On request
		-	AFM60S-SEKB262144	On request
			AFM60S-SHKB262144	1127591
			AFM60S-SJKB262144	On request
	✓		AFM60S-S4SA032768	1118307
			AFM60S-S4SA262144	1086179
		AFM60S-SESA262144	1114298	
		AFM60S-SHSA262144	On request	
		AFM60S-SJSA262144	On request	
	-	AFM60S-S4KA004096	1143549	
		AFM60S-S4KA262144	1125788	
		AFM60S-SEKA262144	On request	
		AFM60S-SHKA262144	On request	
		AFM60S-SJKA262144	On request	
Singleturn	Cable, 12-wire, axial, 0.5 m	✓	AFS60S-S4SI262144	On request
			AFS60S-SESI262144	On request
			AFS60S-SHSI262144	On request

Singleturn or multiturn version	Connection type	Programmable/configurable	Type	Part no.			
			AFS60S-SJSI262144	On request			
		-	AFS60S-S4KI262144	On request			
			AFS60S-SEKI262144	On request			
			AFS60S-SHKI262144	On request			
			AFS60S-SJKI262144	On request			
	Cable, 12-wire, axial, 1.5 m	✓		AFS60S-S4SR262144	1085633		
				AFS60S-SESR262144	On request		
				AFS60S-SHSR262144	On request		
				AFS60S-SJSR262144	On request		
		-		AFS60S-S4KR262144	On request		
				AFS60S-SEKR262144	On request		
				AFS60S-SHKR262144	On request		
				AFS60S-SJKR262144	On request		
			Cable, 12-wire, axial, 10 m	✓		AFS60S-S4SU262144	On request
						AFS60S-SESU262144	On request
		AFS60S-SHSU262144			On request		
		AFS60S-SJSU262144			On request		
	-		AFS60S-S4KU262144	On request			
			AFS60S-SEKU262144	On request			
			AFS60S-SHKU262144	On request			
Singleturn	Cable, 12-wire, axial, 10 m	-	AFS60S-SJKU262144	On request			
	Cable, 12-wire, axial, 3 m	✓		AFS60S-S4SS262144	On request		
				AFS60S-SESS262144	On request		
				AFS60S-SHSS262144	On request		
				AFS60S-SJSS262144	On request		
	-		AFS60S-S4KS262144	On request			
			AFS60S-SEKS262144	On request			
			AFS60S-SHKS262144	On request			
			AFS60S-SJKS262144	On request			
	Cable, 12-wire, axial, 5 m	✓	AFS60S-S4ST262144	On request			

Singleturn or multi-turn version	Connection type	Programmable/configurable	Type	Part no.		
		-	AFS60S-SEST262144	On request		
			AFS60S-SHST262144	On request		
			AFS60S-SJST262144	On request		
			AFS60S-S4KT262144	On request		
			AFS60S-SEKT262144	On request		
			AFS60S-SHKT262144	On request		
			AFS60S-SJKT262144	On request		
		✓	Cable, 12-wire, radial, 0.5 m	AFS60S-S4SJ262144	On request	
				AFS60S-SESJ262144	On request	
				AFS60S-SHSJ262144	On request	
				AFS60S-SJSJ262144	On request	
			-	Cable, 12-wire, radial, 0.5 m	AFS60S-S4KJ262144	On request
					AFS60S-SEKJ262144	On request
					AFS60S-SHKJ262144	On request
	AFS60S-SJKJ262144	On request				
	✓	Cable, 12-wire, radial, 1.5 m	AFS60S-S4SK262144	On request		
			AFS60S-SESK262144	1085632		
			AFS60S-SHSK262144	On request		
			AFS60S-SJSK262144	On request		
		-	Cable, 12-wire, radial, 1.5 m	AFS60S-S4KK262144	On request	
	Singleturn	Cable, 12-wire, radial, 1.5 m	-	AFS60S-SEKK262144	On request	
				AFS60S-SHKK262144	On request	
AFS60S-SJKK262144				On request		
✓			Cable, 12-wire, radial, 10 m	AFS60S-S4SN262144	On request	
				AFS60S-SESN262144	On request	
				AFS60S-SHSN262144	On request	
		AFS60S-SJSN262144		On request		
-		Cable, 12-wire, radial, 10 m	AFS60S-S4KN262144	On request		
			AFS60S-SEKN262144	On request		
			AFS60S-SHKN262144	On request		
			AFS60S-SHKN262144	On request		

Singleturn or multiturn version	Connection type	Programmable/configurable	Type	Part no.	
	Cable, 12-wire, radial, 3 m	✓	AFS60S-SJKN262144	On request	
			AFS60S-S4SL262144	1114783	
			AFS60S-SESL262144	On request	
			AFS60S-SHSL262144	On request	
		-	AFS60S-SJSL262144	1137139	
			AFS60S-S4KL262144	On request	
			AFS60S-SEKL262144	On request	
			AFS60S-SHKL262144	On request	
	Cable, 12-wire, radial, 5 m	✓	AFS60S-SJKL262144	On request	
			AFS60S-S4SM262144	On request	
			AFS60S-SESM262144	On request	
			AFS60S-SHSM262144	On request	
		-	AFS60S-SJSM262144	On request	
			AFS60S-S4KM262144	On request	
			AFS60S-SEKM262144	On request	
			AFS60S-SHKM262144	1145744	
	Male connector, M12, 12-pin, axial	✓	AFS60S-SJKM262144	On request	
			AFS60S-S4SD262144	1096920	
			AFS60S-SESD262144	On request	
	Singleturn	Male connector, M12, 12-pin, axial	✓	AFS60S-SHSD262144	On request
AFS60S-SJSD262144				On request	
-			AFS60S-S4KD262144	On request	
			AFS60S-SEKD262144	On request	
			AFS60S-SHKD262144	On request	
Male connector, M12, 12-pin, radial		✓	AFS60S-SJKD262144	On request	
			AFS60S-S4SC262144	1096659	
			AFS60S-SESC262144	1113978	
			AFS60S-SHSC262144	On request	
		-	AFS60S-SJSC262144	On request	
			-	AFS60S-S4KC001024	1114514

Singleturn or multiturn version	Connection type	Programmable/configurable	Type	Part no.	
			AFS60S-S4KC262144	1113996	
			AFS60S-SEKC262144	1114536	
			AFS60S-SHKC262144	1113995	
			AFS60S-SJKC262144	On request	
	Male connector, M23, 12-pin, axial	✓	AFS60S-S4SB262144	On request	
			AFS60S-SESB262144	On request	
			AFS60S-SHSB262144	On request	
			AFS60S-SJSB262144	On request	
			-	AFS60S-S4KB262144	On request
				AFS60S-SEKB262144	On request
				AFS60S-SHKB262144	On request
				AFS60S-SJKB262144	On request
	Male connector, M23, 12-pin, radial	✓	AFS60S-S4SA262144	1085752	
			AFS60S-SESA262144	On request	
			AFS60S-SHSA262144	On request	
			AFS60S-SJSA262144	On request	
		-	AFS60S-S4KA262144	On request	
			AFS60S-SEKA262144	On request	
			AFS60S-SHKA262144	On request	
			AFS60S-SJKA262144	On request	

- **Safety integrity level:** SIL 3 (IEC 61508, IEC 61800-5-3)
- **Performance level:** PL e (EN ISO 13849-1) (For more detailed information on the exact configuration of your machine/unit, please consult your relevant SICK branch office.)
- **Mechanical design:** blind hollow shaft
- **Communication interface:** SSI
- **Communication Interface detail:** SSI + Sin/Cos

Singleturn or multiturn version	Shaft diameter	Connection type	Programmable/configurable	Type	Part no.
Multiturn	1/2" ¹⁾	Cable, 12-wire, radial, 0.5 m	✓	AFM60S-BFSJ262144	On request
			-	AFM60S-BFKJ262144	On request
		Cable, 12-wire, radial, 1.5 m	✓	AFM60S-BFSK262144	On request
			-	AFM60S-BFKK262144	On request
		Cable, 12-wire, radial, 10 m	✓	AFM60S-BFSN262144	On request
			-	AFM60S-BFKN262144	On request

¹⁾ With feather key groove.

Singleturn or multiturn version	Shaft diameter	Connection type	Programmable/configurable	Type	Part no.	
		Cable, 12-wire, radial, 3 m	✓	AFM60S-BFSL262144	On request	
			-	AFM60S-BFKL262144	On request	
		Cable, 12-wire, radial, 5 m	✓	AFM60S-BFSM262144	On request	
			-	AFM60S-BFKM262144	On request	
		Male connector, M12, 12-pin, radial	✓	AFM60S-BFSC262144	On request	
			-	AFM60S-BFKC262144	On request	
		Male connector, M23, 12-pin, radial	✓	AFM60S-BFSA262144	On request	
			-	AFM60S-BFKA262144	On request	
		10 mm ¹⁾	Cable, 12-wire, radial, 0.5 m	✓	AFM60S-BDSJ262144	On request
				-	AFM60S-BDKJ262144	On request
			Cable, 12-wire, radial, 1.5 m	✓	AFM60S-BDSK262144	1096665
				-	AFM60S-BD-KK262144	On request
	Cable, 12-wire, radial, 10 m		✓	AFM60S-BDSN262144	On request	
			-	AFM60S-BD-KN262144	On request	
	Cable, 12-wire, radial, 3 m		✓	AFM60S-BDSL262144	On request	
			-	AFM60S-BDKL262144	On request	
	Cable, 12-wire, radial, 5 m		✓	AFM60S-BDSM262144	On request	
			-	AFM60S-BD-KM262144	On request	
	Male connector, M12, 12-pin, radial		✓	AFM60S-BDSC262144	1116387	
			-	AFM60S-BD-KC262144	1114021	
	Multiturn	10 mm ¹⁾	Male connector, M23, 12-pin, radial	✓	AFM60S-BDSA262144	1115666
				-	AFM60S-BDKA04096	1135068
				-	AFM60S-BD-KA262144	1114022
		12 mm ¹⁾	Cable, 12-wire, radial, 0.5 m	✓	AFM60S-BESJ262144	On request
-				AFM60S-BEKJ262144	On request	
Cable, 12-wire, radial, 1.5 m			✓	AFM60S-BESK262144	On request	
			-	AFM60S-BEKK262144	On request	
Cable, 12-wire, radial, 10 m			✓	AFM60S-BESN262144	On request	
			-	AFM60S-BEKN262144	On request	

¹⁾ With feather key groove.

Singleturn or multiturn version	Shaft diameter	Connection type	Programmable/configurable	Type	Part no.		
		Cable, 12-wire, radial, 3 m	✓	AFM60S-BESL262144	1124905		
			-	AFM60S-BEKL262144	1119722		
		Cable, 12-wire, radial, 5 m	✓	AFM60S-BESM262144	1123993		
			-	AFM60S-BEKM262144	On request		
		Male connector, M12, 12-pin, radial	✓	AFM60S-BESC262144	1118138		
			-	AFM60S-BEKC262144	1116209		
		Male connector, M23, 12-pin, radial	✓	AFM60S-BESA262144	1085755		
			-	AFM60S-BEKA008192	1113042		
		-	AFM60S-BEKA262144	On request			
		14 mm ¹⁾	Cable, 12-wire, radial, 0.5 m	✓	AFM60S-BGSJ262144	On request	
				-	AFM60S-BGKJ262144	On request	
			Cable, 12-wire, radial, 1.5 m	✓	AFM60S-BGSK262144	On request	
				-	AFM60S-BGKK262144	On request	
			Cable, 12-wire, radial, 10 m	✓	AFM60S-BGSN262144	On request	
	-			AFM60S-BGKN262144	On request		
	Cable, 12-wire, radial, 3 m		✓	AFM60S-BGSL262144	On request		
			-	AFM60S-BGKL262144	On request		
	Cable, 12-wire, radial, 5 m		✓	AFM60S-BGSM262144	On request		
			-	AFM60S-BGKM262144	On request		
	Male connector, M12, 12-pin, radial		✓	AFM60S-BGSC262144	1125352		
			-	AFM60S-BGKC262144	On request		
	Multiturn		14 mm ¹⁾	Male connector, M23, 12-pin, radial	✓	AFM60S-BGSA262144	On request
					-	AFM60S-BGKA262144	1126265
		15 mm ¹⁾	Cable, 12-wire, radial, 0.5 m	✓	AFM60S-BHSJ262144	On request	
				-	AFM60S-BHKJ262144	On request	
			Cable, 12-wire, radial, 1.5 m	✓	AFM60S-BHSK262144	On request	
				-	AFM60S-BHKK262144	On request	
	Cable, 12-wire, radial, 10 m	✓	AFM60S-BHSN262144	On request			
-		AFM60S-BHKN262144	On request				

¹⁾ With feather key groove.

Singleturn or multiturn version	Shaft diameter	Connection type	Programmable/configurable	Type	Part no.	
		Cable, 12-wire, radial, 3 m	✓	AFM60S-BHSL262144	On request	
			-	AFM60S-BHKL262144	On request	
		Cable, 12-wire, radial, 5 m	✓	AFM60S-BHSM262144	On request	
			-	AFM60S-BHKM262144	On request	
		Male connector, M12, 12-pin, radial	✓	AFM60S-BHSC262144	1136641	
			-	AFM60S-BHKC262144	1146080	
		Male connector, M23, 12-pin, radial	✓	AFM60S-BHSA262144	1088924	
			-	AFM60S-BHKA262144	On request	
		3/8" ¹⁾	Cable, 12-wire, radial, 0.5 m	✓	AFM60S-BCSJ262144	On request
				-	AFM60S-BCKJ262144	On request
			Cable, 12-wire, radial, 1.5 m	✓	AFM60S-BCSK262144	On request
				-	AFM60S-BCKK262144	On request
			Cable, 12-wire, radial, 10 m	✓	AFM60S-BCSN262144	On request
				-	AFM60S-BCKN262144	On request
	Cable, 12-wire, radial, 3 m		✓	AFM60S-BCSL262144	1145781	
			-	AFM60S-BCKL262144	On request	
	Cable, 12-wire, radial, 5 m		✓	AFM60S-BCSM262144	On request	
			-	AFM60S-BCKM262144	On request	
	Male connector, M12, 12-pin, radial		✓	AFM60S-BCSC262144	On request	
			-	AFM60S-BCKC262144	On request	
	Male connector, M23, 12-pin, radial		✓	AFM60S-BCSA262144	On request	
			-	AFM60S-BCKA262144	On request	
	Multiturn	6 mm ¹⁾	Cable, 12-wire, radial, 0.5 m	✓	AFM60S-BASJ262144	On request
				-	AFM60S-BAKJ262144	On request
			Cable, 12-wire, radial, 1.5 m	✓	AFM60S-BASK262144	1123006
				-	AFM60S-BAKK262144	On request
			Cable, 12-wire, radial, 10 m	✓	AFM60S-BASN262144	On request
				-	AFM60S-BAKN262144	On request
Cable, 12-wire, radial, 3 m			✓	AFM60S-BASL262144	On request	
			-	AFM60S-BAKL262144	On request	
Cable, 12-wire, radial, 5 m			✓	AFM60S-BASM262144	On request	
			-	AFM60S-BAKM262144	On request	

¹⁾ With feather key groove.

Singleturn or multiturn version	Shaft diameter	Connection type	Programmable/configurable	Type	Part no.	
		Male connector, M12, 12-pin, radial	✓	AFM60S-BASC262144	On request	
			-	AFM60S-BAKC000016	1115754	
			-	AFM60S-BAKC004096	1115755	
			-	AFM60S-BAKC262144	On request	
		Male connector, M23, 12-pin, radial	✓	AFM60S-BASA262144	On request	
			-	AFM60S-BAKA262144	On request	
		8 mm ¹⁾	Cable, 12-wire, radial, 0.5 m	✓	AFM60S-BBSJ262144	On request
				-	AFM60S-BBKJ262144	On request
			Cable, 12-wire, radial, 1.5 m	✓	AFM60S-BBSK262144	On request
				-	AFM60S-BBKK262144	On request
	Cable, 12-wire, radial, 10 m		✓	AFM60S-BBSN262144	On request	
			-	AFM60S-BBKN262144	On request	
	Cable, 12-wire, radial, 3 m		✓	AFM60S-BBSL262144	1145226	
			-	AFM60S-BBKL262144	On request	
	Cable, 12-wire, radial, 5 m		✓	AFM60S-BBSM262144	On request	
			-	AFM60S-BBKM262144	On request	
	Male connector, M12, 12-pin, radial	✓	AFM60S-BBSC262144	On request		
		-	AFM60S-BBKC262144	1134959		
	Male connector, M23, 12-pin, radial	✓	AFM60S-BBSA262144	On request		
		-	AFM60S-BBKA262144	On request		
Singleturn	1/2" ¹⁾	Cable, 12-wire, radial, 0.5 m	✓	AFS60S-BFSJ262144	On request	
			-	AFS60S-BFKJ262144	On request	
		Cable, 12-wire, radial, 1.5 m	✓	AFS60S-BFSK262144	On request	
			-	AFS60S-BFKK262144	On request	
		Cable, 12-wire, radial, 10 m	✓	AFS60S-BFSN262144	On request	
			-	AFS60S-BFKN262144	On request	
		Cable, 12-wire, radial, 3 m	✓	AFS60S-BFSL262144	On request	
			-	AFS60S-BFKL262144	On request	
		Cable, 12-wire, radial, 5 m	✓	AFS60S-BFSM262144	On request	
		Singleturn	1/2" ¹⁾	Cable, 12-wire, radial, 5 m	-	AFS60S-BFKM262144
Male connector, M12, 12-pin, radial	✓			AFS60S-BFSC262144	On request	
	-			AFS60S-BFKC262144	1127258	
Male connector, M23, 12-pin, radial	✓			AFS60S-BFSA262144	On request	
	-			AFS60S-BFKA262144	On request	

¹⁾ With feather key groove.

Singleturn or multiturn version	Shaft diameter	Connection type	Programmable/configurable	Type	Part no.
	10 mm ¹⁾	Cable, 12-wire, radial, 0.5 m	✓	AFS60S-BDSJ262144	On request
			-	AFS60S-BDKJ262144	On request
		Cable, 12-wire, radial, 1.5 m	✓	AFS60S-BDSK262144	On request
			-	AFS60S-BDKK262144	On request
		Cable, 12-wire, radial, 10 m	✓	AFS60S-BDSN262144	On request
			-	AFS60S-BDKN262144	On request
		Cable, 12-wire, radial, 3 m	✓	AFS60S-BDSL262144	1114563
			-	AFS60S-BDKL262144	On request
		Cable, 12-wire, radial, 5 m	✓	AFS60S-BDSM262144	1126089
			-	AFS60S-BDKM262144	On request
	Male connector, M12, 12-pin, radial	✓	AFS60S-BDSC262144	1116378	
		-	AFS60S-BDKC262144	1114787	
	Male connector, M23, 12-pin, radial	✓	AFS60S-BDSA262144	1096666	
		-	AFS60S-BDKA262144	On request	
	12 mm ¹⁾	Cable, 12-wire, radial, 0.5 m	✓	AFS60S-BESJ262144	On request
			-	AFS60S-BEKJ262144	On request
		Cable, 12-wire, radial, 1.5 m	✓	AFS60S-BESK262144	On request
			-	AFS60S-BEKK262144	On request
		Cable, 12-wire, radial, 10 m	✓	AFS60S-BESN262144	On request
			-	AFS60S-BEKN262144	On request
Cable, 12-wire, radial, 3 m		✓	AFS60S-BESL262144	On request	
		-	AFS60S-BEKL262144	On request	
Cable, 12-wire, radial, 5 m		✓	AFS60S-BESM262144	1124219	
		-	AFS60S-BEKM262144	On request	
Male connector, M12, 12-pin, radial	✓	AFS60S-BESC262144	On request		
Singleturn	12 mm ¹⁾	Male connector, M12, 12-pin, radial	-	AFS60S-BEKC004096	1129536
			-	AFS60S-BEKC262144	On request
		Male connector, M23, 12-pin, radial	✓	AFS60S-BESA262144	On request
			-	AFS60S-BEKA032768	1118167
	14 mm ¹⁾	Cable, 12-wire, radial, 0.5 m	✓	AFS60S-BGSJ262144	On request
			-	AFS60S-BGKJ262144	On request
		Cable, 12-wire, radial, 1.5 m	✓	AFS60S-BGSK262144	On request
			-	AFS60S-BGKK262144	On request

¹⁾ With feather key groove.

Singleturn or multiturn version	Shaft diameter	Connection type	Programmable/configurable	Type	Part no.		
		Cable, 12-wire, radial, 10 m	✓	AFS60S-BGSN262144	On request		
			-	AFS60S-BGKN262144	On request		
		Cable, 12-wire, radial, 3 m	✓	AFS60S-BGSL262144	On request		
			-	AFS60S-BGKL262144	On request		
		Cable, 12-wire, radial, 5 m	✓	AFS60S-BGSM262144	On request		
			-	AFS60S-BGKM262144	On request		
		Male connector, M12, 12-pin, radial	✓	AFS60S-BGSC262144	On request		
			-	AFS60S-BGKC262144	1116554		
		Male connector, M23, 12-pin, radial	✓	AFS60S-BGSA262144	On request		
			-	AFS60S-BGKA262144	On request		
		15 mm ¹⁾	Cable, 12-wire, radial, 0.5 m	✓	AFS60S-BHSJ262144	On request	
				-	AFS60S-BHKJ262144	On request	
			Cable, 12-wire, radial, 1.5 m	✓	AFS60S-BHSK262144	On request	
				-	AFS60S-BHKK262144	On request	
	Cable, 12-wire, radial, 10 m		✓	AFS60S-BHSN262144	On request		
			-	AFS60S-BHKN262144	On request		
	Cable, 12-wire, radial, 3 m		✓	AFS60S-BHSL262144	On request		
			-	AFS60S-BHKL262144	On request		
	Cable, 12-wire, radial, 5 m		✓	AFS60S-BHSM262144	On request		
			-	AFS60S-BHKM262144	On request		
	Male connector, M12, 12-pin, radial		✓	AFS60S-BHSC262144	On request		
	Singleturn		15 mm ¹⁾	Male connector, M12, 12-pin, radial	-	AFS60S-BHKC262144	1120544
				Male connector, M23, 12-pin, radial	✓	AFS60S-BHSA262144	1088781
					-	AFS60S-BHKA262144	1122368
		3/8" ¹⁾	Cable, 12-wire, radial, 0.5 m	✓	AFS60S-BCSJ262144	On request	
				-	AFS60S-BCKJ262144	On request	
			Cable, 12-wire, radial, 1.5 m	✓	AFS60S-BCSK262144	On request	
				-	AFS60S-BCKK262144	On request	
Cable, 12-wire, radial, 10 m			✓	AFS60S-BCSN262144	On request		
	-	AFS60S-BCKN262144	On request				

¹⁾ With feather key groove.

Singleturn or multiturn version	Shaft diameter	Connection type	Programmable/configurable	Type	Part no.	
		Cable, 12-wire, radial, 3 m	✓	AFS60S-BCSL262144	On request	
			-	AFS60S-BCKL262144	On request	
		Cable, 12-wire, radial, 5 m	✓	AFS60S-BCSM262144	On request	
			-	AFS60S-BCKM262144	On request	
		Male connector, M12, 12-pin, radial	✓	AFS60S-BCSC262144	On request	
			-	AFS60S-BCKC262144	On request	
		Male connector, M23, 12-pin, radial	✓	AFS60S-BCSA262144	On request	
			-	AFS60S-BCKA262144	On request	
		5/8" ¹⁾	Cable, 12-wire, radial, 0.5 m	✓	AFS60S-BJSJ262144	On request
				-	AFS60S-BJKJ262144	On request
			Cable, 12-wire, radial, 1.5 m	✓	AFS60S-BJSK262144	On request
				-	AFS60S-BJKK262144	On request
	Cable, 12-wire, radial, 10 m		✓	AFS60S-BJSN262144	On request	
			-	AFS60S-BJKN262144	On request	
	Cable, 12-wire, radial, 3 m		✓	AFS60S-BJSL262144	On request	
			-	AFS60S-BJKL262144	On request	
	Cable, 12-wire, radial, 5 m		✓	AFS60S-BJSM262144	On request	
			-	AFS60S-BJKM262144	On request	
	Male connector, M12, 12-pin, radial		✓	AFS60S-BJSC262144	On request	
			-	AFS60S-BJKC262144	On request	
	Male connector, M23, 12-pin, radial	✓	AFS60S-BJSA262144	1142329		
	Singleturn	5/8" ¹⁾	Male connector, M23, 12-pin, radial	-	AFS60S-BJKA262144	On request
		6 mm ¹⁾	Cable, 12-wire, radial, 0.5 m	✓	AFS60S-BASJ262144	On request
				-	AFS60S-BAKJ262144	On request
Cable, 12-wire, radial, 1.5 m			✓	AFS60S-BASK262144	1125440	
			-	AFS60S-BAKK262144	On request	
Cable, 12-wire, radial, 10 m			✓	AFS60S-BASN262144	On request	
			-	AFS60S-BAKN262144	On request	
Cable, 12-wire, radial, 3 m		✓	AFS60S-BASL262144	On request		
		-	AFS60S-BAKL262144	On request		

¹⁾ With feather key groove.

Singleturn or multiturn version	Shaft diameter	Connection type	Programmable/configurable	Type	Part no.	
		Cable, 12-wire, radial, 5 m	✓	AFS60S-BASM262144	On request	
			-	AFS60S-BAKM262144	On request	
		Male connector, M12, 12-pin, radial	✓	AFS60S-BASC262144	On request	
			-	AFS60S-BAKC262144	On request	
		Male connector, M23, 12-pin, radial	✓	AFS60S-BASA262144	On request	
			-	AFS60S-BAKA262144	On request	
		8 mm ¹⁾	Cable, 12-wire, radial, 0.5 m	✓	AFS60S-BBSJ262144	On request
				-	AFS60S-BBKJ262144	On request
	Cable, 12-wire, radial, 1.5 m		✓	AFS60S-BBSK262144	On request	
			-	AFS60S-BBKK262144	On request	
	Cable, 12-wire, radial, 10 m		✓	AFS60S-BBSN262144	On request	
			-	AFS60S-BBKN262144	On request	
	Cable, 12-wire, radial, 3 m		✓	AFS60S-BBSL262144	On request	
			-	AFS60S-BBKL262144	On request	
	Cable, 12-wire, radial, 5 m		✓	AFS60S-BBSM262144	On request	
			-	AFS60S-BBKM262144	On request	
	Male connector, M12, 12-pin, radial		✓	AFS60S-BBSC262144	On request	
			-	AFS60S-BBKC001024	1114513	
		-	AFS60S-BBKC262144	1119255		
	Male connector, M23, 12-pin, radial	✓	AFS60S-BBSA262144	On request		
-		AFS60S-BBKA262144	On request			

¹⁾ With feather key groove.

- **Safety integrity level:** SIL 3 (IEC 61508, IEC 61800-5-3)
- **Performance level:** PL e (EN ISO 13849-1) (For more detailed information on the exact configuration of your machine/unit, please consult your relevant SICK branch office.)
- **Mechanical design:** through hollow shaft
- **Communication interface:** SSI
- **Communication Interface detail:** SSI + Sin/Cos

Singleturn or multiturn version	Shaft diameter	Connection type	Programmable/configurable	Type	Part no.
Multiturn	1/2" ¹⁾	Cable, 12-wire, radial, 0.5 m	✓	AFM60S-TFSJ262144	On request
			-	AFM60S-TFKJ262144	On request
		Cable, 12-wire, radial, 1.5 m	✓	AFM60S-TFSK262144	1127371
			-	AFM60S-TFKK262144	On request

¹⁾ With feather key groove.

Singleturn or multiturn version	Shaft diameter	Connection type	Programmable/configurable	Type	Part no.		
Singleturn or multiturn version		Cable, 12-wire, radial, 10 m	✓	AFM60S-TFSN262144	On request		
			-	AFM60S-TFKN262144	On request		
		Cable, 12-wire, radial, 3 m	✓	AFM60S-TFSL262144	On request		
			-	AFM60S-TFKL262144	On request		
		Cable, 12-wire, radial, 5 m	✓	AFM60S-TFSM262144	On request		
			-	AFM60S-TFKM262144	On request		
		Male connector, M12, 12-pin, radial	✓	AFM60S-TFSC262144	1120224		
			-	AFM60S-TFKC262144	On request		
		Male connector, M23, 12-pin, radial	✓	AFM60S-TFSA262144	On request		
			-	AFM60S-TFKA262144	On request		
		10 mm ¹⁾	Cable, 12-wire, radial, 0.5 m	✓	AFM60S-TDSJ262144	On request	
				-	AFM60S-TDKJ262144	On request	
			Cable, 12-wire, radial, 1.5 m	✓	AFM60S-TDSK262144	1096664	
				-	AFM60S-TDKK262144	On request	
	Cable, 12-wire, radial, 10 m		✓	AFM60S-TDSN262144	On request		
			-	AFM60S-TDKN262144	On request		
	Cable, 12-wire, radial, 3 m		✓	AFM60S-TDSL262144	1132954		
			-	AFM60S-TDKL262144	On request		
	Cable, 12-wire, radial, 5 m		✓	AFM60S-TDSM262144	On request		
			-	AFM60S-TDKM262144	On request		
	Male connector, M12, 12-pin, radial		✓	AFM60S-TDSC016384	1111703		
	Multiturn		10 mm ¹⁾	Male connector, M12, 12-pin, radial	✓	AFM60S-TDSC262144	1113688
					-	AFM60S-TDKC262144	On request
				Male connector, M23, 12-pin, radial	✓	AFM60S-TDSA262144	1115667
		-			AFM60S-TDKA262144	On request	
		12 mm ¹⁾	Cable, 12-wire, radial, 0.5 m	✓	AFM60S-TESJ262144	On request	
				-	AFM60S-TEKJ262144	On request	
	Cable, 12-wire, radial, 1.5 m		✓	AFM60S-TESK262144	On request		
-			AFM60S-TEKK262144	1120545			
Cable, 12-wire, radial, 10 m	✓	AFM60S-TESN262144	1124615				
	-	AFM60S-TEKN262144	1125644				

¹⁾ With feather key groove.

Singleturn or multiturn version	Shaft diameter	Connection type	Programmable/configurable	Type	Part no.	
		Cable, 12-wire, radial, 3 m	✓	AFM60S-TESL262144	On request	
			-	AFM60S-TEKL262144	On request	
		Cable, 12-wire, radial, 5 m	✓	AFM60S-TESM262144	On request	
			-	AFM60S-TEKM262144	On request	
		Male connector, M12, 12-pin, radial	✓	AFM60S-TESC262144	1112887	
			-	AFM60S-TEKC004096	1112560	
			-	AFM60S-TEKC262144	1126837	
		Male connector, M23, 12-pin, radial	✓	AFM60S-TESA262144	On request	
			-	AFM60S-TEKA008192	1118482	
			-	AFM60S-TEKA262144	1123110	
		14 mm ¹⁾	Cable, 12-wire, radial, 0.5 m	✓	AFM60S-TGSJ262144	On request
				-	AFM60S-TGKJ262144	On request
			Cable, 12-wire, radial, 1.5 m	✓	AFM60S-TGSK262144	1127906
				-	AFM60S-TGKK262144	On request
			Cable, 12-wire, radial, 10 m	✓	AFM60S-TGSN262144	On request
				-	AFM60S-TGKN262144	On request
			Cable, 12-wire, radial, 3 m	✓	AFM60S-TGSL262144	On request
				-	AFM60S-TGKL262144	On request
	Cable, 12-wire, radial, 5 m		✓	AFM60S-TGSM262144	On request	
			-	AFM60S-TGKM262144	On request	
	Multiturn	14 mm ¹⁾	Male connector, M12, 12-pin, radial	✓	AFM60S-TGSC262144	1122018
				-	AFM60S-TGKC262144	1114239
			Male connector, M23, 12-pin, radial	✓	AFM60S-TGSA262144	1124277
				-	AFM60S-TGKA262144	1124278
15 mm ¹⁾		Cable, 12-wire, radial, 0.5 m	✓	AFM60S-THSJ262144	On request	
			-	AFM60S-THKJ262144	On request	
		Cable, 12-wire, radial, 1.5 m	✓	AFM60S-THSK262144	1085754	
			-	AFM60S-THKK262144	On request	
		Cable, 12-wire, radial, 10 m	✓	AFM60S-THSN262144	1115155	
			-	AFM60S-THKN262144	On request	

¹⁾ With feather key groove.

Singleturn or multiturn version	Shaft diameter	Connection type	Programmable/configurable	Type	Part no.		
		Cable, 12-wire, radial, 3 m	✓	AFM60S-THSL262144	1124858		
			-	AFM60S-THKL262144	On request		
		Cable, 12-wire, radial, 5 m	✓	AFM60S-THSM262144	On request		
			-	AFM60S-THKM262144	On request		
		Male connector, M12, 12-pin, radial	✓	AFM60S-THSC262144	1115097		
			-	AFM60S-THKC262144	1122059		
		Male connector, M23, 12-pin, radial	✓	AFM60S-THSA262144	1082017		
			-	AFM60S-THKA262144	On request		
		3/8" ¹⁾	Cable, 12-wire, radial, 0.5 m	✓	AFM60S-TCSJ262144	On request	
				-	AFM60S-TCKJ262144	On request	
			Cable, 12-wire, radial, 1.5 m	✓	AFM60S-TCSK262144	On request	
				-	AFM60S-TCKK262144	On request	
			Cable, 12-wire, radial, 10 m	✓	AFM60S-TCSN262144	On request	
				-	AFM60S-TCKN262144	On request	
	Cable, 12-wire, radial, 3 m		✓	AFM60S-TCSL262144	On request		
			-	AFM60S-TCKL262144	On request		
	Cable, 12-wire, radial, 5 m		✓	AFM60S-TCSM262144	On request		
			-	AFM60S-TCKM262144	On request		
	Male connector, M12, 12-pin, radial		✓	AFM60S-TCSC262144	On request		
			-	AFM60S-TCKC262144	On request		
	Multiturn		3/8" ¹⁾	Male connector, M23, 12-pin, radial	✓	AFM60S-TCSA262144	On request
					-	AFM60S-TCKA262144	On request
		6 mm ¹⁾	Cable, 12-wire, radial, 0.5 m	✓	AFM60S-TASJ262144	On request	
				-	AFM60S-TAKJ262144	1146511	
			Cable, 12-wire, radial, 1.5 m	✓	AFM60S-TASK262144	1145598	
				-	AFM60S-TAKK262144	On request	
			Cable, 12-wire, radial, 10 m	✓	AFM60S-TASN262144	On request	
				-	AFM60S-TAKN262144	On request	
Cable, 12-wire, radial, 3 m	✓	AFM60S-TASL262144	On request				
	-	AFM60S-TAKL262144	On request				

¹⁾ With feather key groove.

Singleturn or multiturn version	Shaft diameter	Connection type	Programmable/configurable	Type	Part no.	
		Cable, 12-wire, radial, 5 m	✓	AFM60S-TASM262144	On request	
			-	AFM60S-TAKM262144	On request	
		Male connector, M12, 12-pin, radial	✓	AFM60S-TASC262144	1121426	
			-	AFM60S-TAKC262144	On request	
		Male connector, M23, 12-pin, radial	✓	AFM60S-TASA262144	On request	
			-	AFM60S-TAKA262144	On request	
		8 mm ¹⁾	Cable, 12-wire, radial, 0.5 m	✓	AFM60S-TBSJ262144	On request
				-	AFM60S-TBKJ262144	On request
			Cable, 12-wire, radial, 1.5 m	✓	AFM60S-TBSK262144	1145197
				-	AFM60S-TBKK262144	On request
	Cable, 12-wire, radial, 10 m		✓	AFM60S-TBSN262144	On request	
			-	AFM60S-TBKN262144	On request	
	Cable, 12-wire, radial, 3 m		✓	AFM60S-TBSL262144	On request	
			-	AFM60S-TBKL262144	On request	
	Cable, 12-wire, radial, 5 m		✓	AFM60S-TBSM262144	On request	
			-	AFM60S-TBKM262144	On request	
	Male connector, M12, 12-pin, radial	✓	AFM60S-TBSC262144	1128194		
		-	AFM60S-TBKC262144	On request		
	Male connector, M23, 12-pin, radial	✓	AFM60S-TBSA262144	On request		
		-	AFM60S-TBKA262144	On request		
Singleturn	1/2" ¹⁾	Cable, 12-wire, radial, 0.5 m	✓	AFS60S-TFSJ262144	On request	
			-	AFS60S-TFKJ262144	On request	
		Cable, 12-wire, radial, 1.5 m	✓	AFS60S-TFSK262144	On request	
			-	AFS60S-TFKK262144	On request	
		Cable, 12-wire, radial, 10 m	✓	AFS60S-TFSN262144	On request	
			-	AFS60S-TFKN262144	On request	
		Cable, 12-wire, radial, 3 m	✓	AFS60S-TFSL262144	On request	
			-	AFS60S-TFKL262144	On request	
		Cable, 12-wire, radial, 5 m	✓	AFS60S-TFSM262144	On request	
		Singleturn	1/2" ¹⁾	Cable, 12-wire, radial, 5 m	-	AFS60S-TFKM262144
✓	AFS60S-TFSC262144				On request	
Male connector, M12, 12-pin, radial	-			AFS60S-TFKC262144	On request	
	✓			AFS60S-TFSA262144	On request	
10 mm ¹⁾	Male connector, M23, 12-pin, radial		-	AFS60S-TFKA262144	On request	
			✓	AFS60S-TDSJ262144	On request	
	Cable, 12-wire, radial, 0.5 m		-	AFS60S-TDKJ262144	On request	

¹⁾ With feather key groove.

Singleturn or multiturn version	Shaft diameter	Connection type	Programmable/configurable	Type	Part no.	
		Cable, 12-wire, radial, 1.5 m	✓	AFS60S-TDSK262144	On request	
			-	AFS60S-TDKK262144	1136642	
		Cable, 12-wire, radial, 10 m	✓	AFS60S-TDSN262144	On request	
			-	AFS60S-TDKN262144	On request	
		Cable, 12-wire, radial, 3 m	✓	AFS60S-TDSL262144	On request	
			-	AFS60S-TDKL262144	On request	
		Cable, 12-wire, radial, 5 m	✓	AFS60S-TDSM262144	On request	
			-	AFS60S-TDKM262144	On request	
		Male connector, M12, 12-pin, radial	✓	AFS60S-TDSC262144	1143623	
			-	AFS60S-TDKC004096	1102821	
			-	AFS60S-TDKC262144	1113611	
		Male connector, M23, 12-pin, radial	✓	AFS60S-TDSA262144	On request	
			-	AFS60S-TDKA262144	1085753	
		12 mm ¹⁾	Cable, 12-wire, radial, 0.5 m	✓	AFS60S-TEJ262144	1135720
	-			AFS60S-TEKJ262144	On request	
	Cable, 12-wire, radial, 1.5 m		✓	AFS60S-TESK262144	On request	
			-	AFS60S-TEKK262144	1139150	
	Cable, 12-wire, radial, 10 m		✓	AFS60S-TESN262144	1119690	
			-	AFS60S-TEKN262144	On request	
	Cable, 12-wire, radial, 3 m		✓	AFS60S-TESL262144	On request	
			-	AFS60S-TEKL262144	On request	
	Cable, 12-wire, radial, 5 m		✓	AFS60S-TESM262144	On request	
			-	AFS60S-TEKM262144	On request	
	Singleturn	12 mm ¹⁾	Male connector, M12, 12-pin, radial	✓	AFS60S-TESC262144	1111861
				-	AFS60S-TEKC004096	1108271
			-	AFS60S-TEKC262144	On request	
			Male connector, M23, 12-pin, radial	✓	AFS60S-TESA262144	On request
		-		AFS60S-TEKA262144	On request	
14 mm ¹⁾		Cable, 12-wire, radial, 0.5 m	✓	AFS60S-TGSJ262144	On request	
			-	AFS60S-TGKJ262144	On request	
		Cable, 12-wire, radial, 1.5 m	✓	AFS60S-TGSK262144	On request	
	-		AFS60S-TGKK262144	On request		

¹⁾ With feather key groove.

Singleturn or multiturn version	Shaft diameter	Connection type	Programmable/configurable	Type	Part no.		
		Cable, 12-wire, radial, 10 m	✓	AFS60S-TGSN262144	1126818		
			-	AFS60S-TGKN262144	On request		
		Cable, 12-wire, radial, 3 m	✓	AFS60S-TGSL262144	On request		
			-	AFS60S-TGKL262144	On request		
		Cable, 12-wire, radial, 5 m	✓	AFS60S-TGSM262144	On request		
			-	AFS60S-TGKM262144	1123199		
		Male connector, M12, 12-pin, radial	✓	AFS60S-TGSC262144	1131945		
			-	AFS60S-TGKC262144	1122543		
		Male connector, M23, 12-pin, radial	✓	AFS60S-TGSA262144	On request		
			-	AFS60S-TGKA01024	1110500		
		-	AFS60S-TGKA262144	1126819			
		15 mm ¹⁾	Cable, 12-wire, radial, 0.5 m	✓	AFS60S-THSJ262144	On request	
				-	AFS60S-THKJ262144	On request	
			Cable, 12-wire, radial, 1.5 m	✓	AFS60S-THSK262144	On request	
	-			AFS60S-THKK262144	On request		
	Cable, 12-wire, radial, 10 m		✓	AFS60S-THSN262144	On request		
			-	AFS60S-THKN262144	On request		
	Cable, 12-wire, radial, 3 m		✓	AFS60S-THSL262144	On request		
			-	AFS60S-THKL262144	On request		
	Cable, 12-wire, radial, 5 m		✓	AFS60S-THSM262144	1129751		
			-	AFS60S-THKM262144	1145745		
	Singleturn		15 mm ¹⁾	Male connector, M12, 12-pin, radial	✓	AFS60S-THSC262144	1096636
					-	AFS60S-THKC262144	1128297
				Male connector, M23, 12-pin, radial	✓	AFS60S-THSA262144	1082018
					-	AFS60S-THKA262144	On request
		3/8" ¹⁾	Cable, 12-wire, radial, 0.5 m	✓	AFS60S-TCSJ262144	On request	
				-	AFS60S-TCKJ262144	On request	
	Cable, 12-wire, radial, 1.5 m		✓	AFS60S-TCSK262144	On request		
-			AFS60S-TCKK262144	On request			
Cable, 12-wire, radial, 10 m	✓	AFS60S-TCSN262144	On request				
	-	AFS60S-TCKN262144	On request				

¹⁾ With feather key groove.

Singleturn or multiturn version	Shaft diameter	Connection type	Programmable/configurable	Type	Part no.	
		Cable, 12-wire, radial, 3 m	✓	AFS60S-TCSL262144	On request	
			-	AFS60S-TCKL262144	On request	
		Cable, 12-wire, radial, 5 m	✓	AFS60S-TCSM262144	On request	
			-	AFS60S-TCKM262144	On request	
		Male connector, M12, 12-pin, radial	✓	AFS60S-TCSC262144	On request	
			-	AFS60S-TCKC262144	On request	
		Male connector, M23, 12-pin, radial	✓	AFS60S-TCSA262144	On request	
			-	AFS60S-TCKA262144	On request	
		5/8" ¹⁾	Cable, 12-wire, radial, 0.5 m	✓	AFS60S-TJSJ262144	On request
				-	AFS60S-TJKJ262144	On request
	Cable, 12-wire, radial, 1.5 m		✓	AFS60S-TJSK262144	On request	
			-	AFS60S-TJKK262144	1120489	
	Cable, 12-wire, radial, 10 m		✓	AFS60S-TJSN262144	On request	
			-	AFS60S-TJKN262144	On request	
	Cable, 12-wire, radial, 3 m		✓	AFS60S-TJSL262144	On request	
			-	AFS60S-TJKL262144	On request	
	Cable, 12-wire, radial, 5 m		✓	AFS60S-TJSM262144	On request	
			-	AFS60S-TJKM262144	On request	
	Male connector, M12, 12-pin, radial	✓	AFS60S-TJSC262144	1122652		
		-	AFS60S-TJKC262144	On request		
Singleturn	5/8" ¹⁾	Male connector, M23, 12-pin, radial	✓	AFS60S-TJSA262144	On request	
			-	AFS60S-TJKA262144	On request	
	6 mm ¹⁾	Cable, 12-wire, radial, 0.5 m	✓	AFS60S-TASJ262144	On request	
			-	AFS60S-TAKJ262144	On request	
		Cable, 12-wire, radial, 1.5 m	✓	AFS60S-TASK262144	On request	
			-	AFS60S-TAKK262144	On request	
		Cable, 12-wire, radial, 10 m	✓	AFS60S-TASN262144	On request	
			-	AFS60S-TAKN262144	On request	
		Cable, 12-wire, radial, 3 m	✓	AFS60S-TASL262144	On request	
			-	AFS60S-TAKL262144	On request	

¹⁾ With feather key groove.

Singleturn or multiturn version	Shaft diameter	Connection type	Programmable/configurable	Type	Part no.	
		Cable, 12-wire, radial, 5 m	✓	AFS60S-TASM262144	On request	
			-	AFS60S-TAKM262144	On request	
		Male connector, M12, 12-pin, radial	✓	AFS60S-TASC262144	On request	
			-	AFS60S-TAKC262144	On request	
		Male connector, M23, 12-pin, radial	✓	AFS60S-TASA262144	On request	
			-	AFS60S-TAKA262144	On request	
		8 mm ¹⁾	Cable, 12-wire, radial, 0.5 m	✓	AFS60S-TBSJ262144	On request
				-	AFS60S-TBKJ262144	On request
	Cable, 12-wire, radial, 1.5 m		✓	AFS60S-TBSK262144	On request	
			-	AFS60S-TBKK262144	On request	
	Cable, 12-wire, radial, 10 m		✓	AFS60S-TBSN262144	On request	
			-	AFS60S-TBKN262144	On request	
	Cable, 12-wire, radial, 3 m		✓	AFS60S-TBSL262144	On request	
			-	AFS60S-TBKL262144	On request	
	Cable, 12-wire, radial, 5 m		✓	AFS60S-TBSM262144	On request	
			-	AFS60S-TBKM262144	On request	
	Male connector, M12, 12-pin, radial		✓	AFS60S-TBSC262144	On request	
			-	AFS60S-TBKC262144	1123236	
	Male connector, M23, 12-pin, radial	✓	AFS60S-TBSA262144	On request		
		-	AFS60S-TBKA262144	On request		

¹⁾ With feather key groove.

SICK AT A GLANCE

SICK is one of the leading manufacturers of intelligent sensors and sensor solutions for industrial applications. A unique range of products and services creates the perfect basis for controlling processes securely and efficiently, protecting individuals from accidents and preventing damage to the environment.

We have extensive experience in a wide range of industries and understand their processes and requirements. With intelligent sensors, we can deliver exactly what our customers need. In application centers in Europe, Asia and North America, system solutions are tested and optimized in accordance with customer specifications. All this makes us a reliable supplier and development partner.

Comprehensive services complete our offering: SICK LifeTime Services provide support throughout the machine life cycle and ensure safety and productivity.

For us, that is “Sensor Intelligence.”

WORLDWIDE PRESENCE:

Contacts and other locations –www.sick.com