

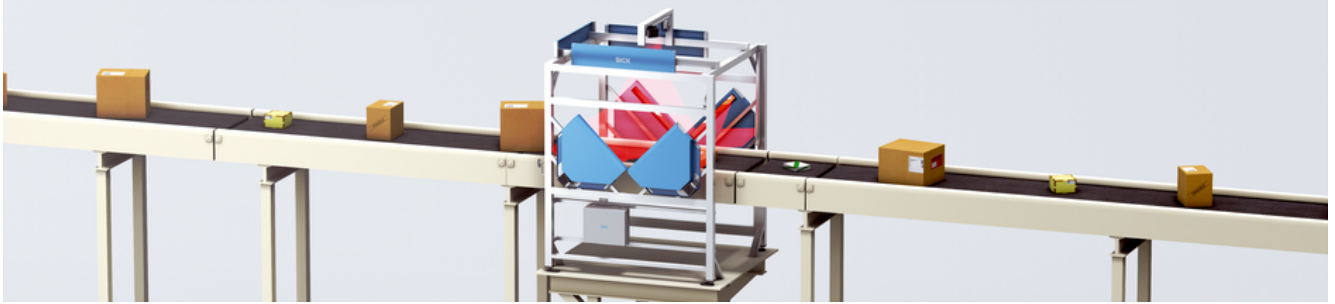


## CLV69x

1D code identification with auto focus scanner and tracking function for high throughput

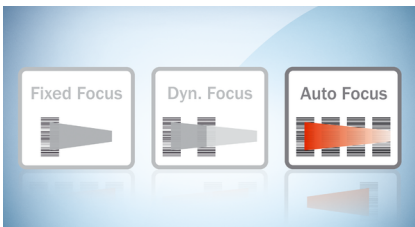
**SICK**  
Sensor Intelligence.

## Advantages



### High system availability for large working ranges

The CLV69x is in its element when large working ranges need to be covered reliably and with high throughput. The scanner is equipped with auto focus to read different module sizes and respond to variable reading distances. This means that no additional identification solutions are needed. Once set up, the settings are passed on to any exchange units via a flexible cloning plug so that no system or conveyor belt has to stand still for long.



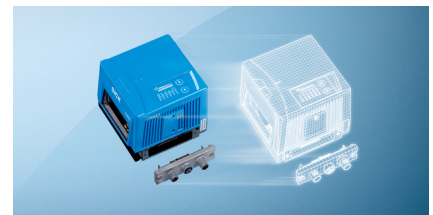
#### Immense depth of field thanks to auto focus

Thanks to the integrated auto focus, only one device is required for a wide range of code sizes and changing reading distances in order to cover large working ranges. In addition, sensors such as photoelectric sensors that trigger focus switching are no longer required.



#### Increase efficiency with networking and tracking

The CLV69x devices allow for omnidirectional networking as a track and trace system. With their integrated tracking function, the fixed mount barcode scanners enable high throughput of objects of the most varied heights, regardless of the code orientation on the conveying equipment (360° reading).



#### The cloning plug remembers everything

The sophisticated concept with flexible cloning plug ensures very high system availability. With uniform connection technology and the cloning function, devices can be replaced very quickly.



**Reduced downtime thanks to auto focus and cloning plug.**



## Reliable reading under harsh conditions

Strong temperature fluctuations and high vibrations can lead to codes not being read. That's why it's good that the CLV69x is available with front screen heating and shock absorbers to reduce No Reads to a minimum. The image output serves as additional protection for analysis of the read results.



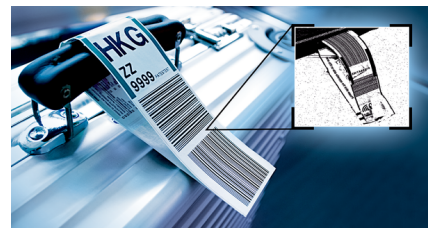
### Withstands fluctuating ambient temperatures

Depending on the device variant, the CLV69x is equipped with integrated heating in order to work reliably even in deep-freeze environments down to  $-35\text{ }^{\circ}\text{C}$ . The fixed mount barcode scanner requires neither additional installation space nor extra cabling to connect the heating. An additional heater for the front screen prevents the viewing window from fogging up.



### Unshakeable thanks to shock absorber

The specially designed bracket for applications with high vibrations or shocks compensates for the forces acting on the CLV69x. This significantly increases the service life of the fixed mount barcode scanner.

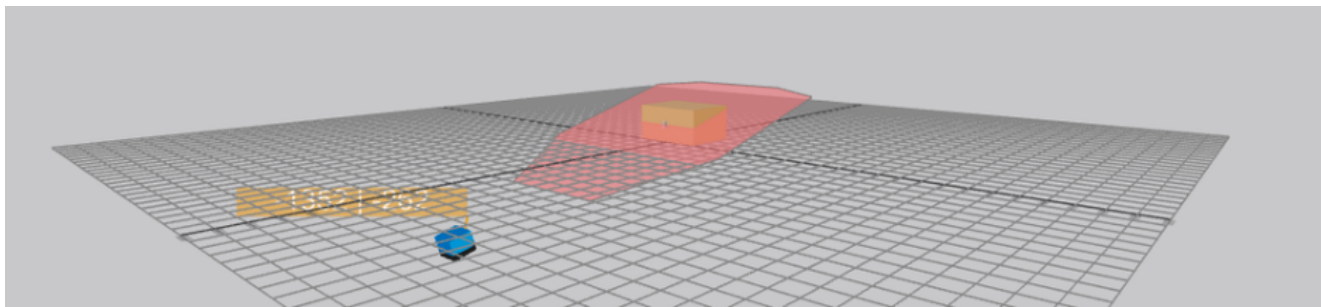


### Analyze with image output

The image output is used to display the recorded image data and the focus progression of successful read processes in software, which is the basis for reliable No Read analysis.



**The image output ensures constant optimization of data decoding under very difficult reading conditions.**



## Virtual product demo before purchase? SICK makes it possible.

Bring our products to life: Our reading field visualization tools can be used to visualize all CLV69x device variants. Select your device parameters and use our tool to find out which product variant is the best one for your device. Uncertainty when selecting products is a thing of the past.



Use product visualization to help you select the exact right product before you buy.

## SICK LifeTime Services

SICK's services increase machine and plant productivity, enhance the safety of people all over the world, provide a solid foundation for a sustainable business operation, and protect investment goods. In addition to its usual consulting services, SICK provides direct on-site support during the conceptual design and commissioning phases as well as during operation.

The range of services not only covers aspects like maintenance and inspection, but also includes performance checks as well as upgrades and retrofits. Modular or customized service contracts extend the service life of plants and therefore increase their availability. If faults occur or limit values are exceeded, these are detected at all times by the corresponding sensors and systems.



### Consulting and design

Application-specific advice on the product, its integration and the application itself.



### commissioning and maintenance

Application-optimized and sustainable — thanks to professional commissioning and maintenance by a trained SICK service technician.



### service contracts

Extended warranty, SICK Remote Service, 24-hour helpdesk, maintenance, availability guarantees and other modular components can be individually combined on request.



## Technical data overview

<b>Optical focus</b>	Auto focus
<b>Aperture angle</b>	≤ 60° / ≤ 50° (depending on type)
<b>Scanning frequency</b>	400 Hz ... 1,200 Hz
<b>Code resolution</b>	0.17 mm ... 1.2 mm (depending on type)
<b>Reading distance</b>	400 mm ... 2,200 mm (depending on type)
<b>Ethernet</b>	✓, TCP/IP
<b>PROFINET</b>	✓, optional over external fieldbus module
<b>EtherNet/IP™</b>	✓
<b>Serial</b>	✓, RS-232, RS-422, RS-485
<b>CAN</b>	✓
<b>PROFIBUS DP</b>	✓, optional over external fieldbus module
<b>Weight</b>	1,500 g / 2,200 g (depending on type)

## Product description

The CLV69x fixed mount barcode scanner offers an excellent reading performance, high-speed processing and a high level of reading accuracy. The auto focus function is based on built-in distance measurement technology and makes it possible to have height-independent code reading within the reading field. Simple and user-friendly parameterization is guaranteed using the standard SOPAS ET operating system from SICK. Due to built-in SMART+ code reconstruction technology, the CLV69x can read heavily contaminated or partially damaged barcodes, as well as those with a high angle of tilt. With its integrated tracking, the CLV69x can handle standard applications without an additional system controller. The innovative connectivity with built-in parameter storage not only enables fast, simple scanner replacement, but also easy integration into a variety of applications.

## At a glance

- Advanced SMART+ code reconstruction technology
- New and flexible cloning plug technology
- CAN, Ethernet and serial communications available on board (dependent on cloning plug variant)
- Large depth of field due to real-time auto focus
- Consistent, user-friendly "SOPAS ET" software
- Built-in tracking without the use of an additional system controller
- Flexible sorting, filtering, and logical functions
- Integrated LED bar graph with pushbuttons

## Your benefits

- Higher reading rate on damaged, heavily contaminated and partially damaged barcodes using the SMART+ algorithm
- Increased processing allows for faster and more accurate performance on demanding applications
- Fewer costs since no additional Ethernet gateway is required when using the Ethernet clone plug
- Time savings during commissioning thanks to integrated buttons and bar graph
- Increased scanner intelligence enables sophisticated configuration of logical operations, reducing the control system programming effort. Data is delivered in the desired format
- Cost savings since standard applications can be implemented without an additional system controller due to integrated tracking

## Fields of application

- Courier, express, parcel and postal services (CEP)
- Airport luggage identification – ALIS applications
- OMNI-directional barcode reading
- Integration in RFID hybrid systems and high-end camera tunnels
- Pallet identification

## Ordering information

Other models and accessories → [www.sick.com/CLV69x](http://www.sick.com/CLV69x)

- **Optical focus:** Auto focus
- **Type:** Cloning plug
- **Code printing process:** Label (printed codes)
- **Communication interface:** Ethernet, PROFINET, EtherNet/IP™, Serial, CAN, PROFIBUS DP
- **Enclosure rating:** IP65

Max. reading distance	Code resolution	Sensor type	Window material	Cold storage applications	Type	Part no.
≤ 1,600 mm	0.17 mm ... 0.4 mm	Line scanner	Glass	✓	CLV692-0001	1056610
				-	CLV692-0000	1056608
		Oscillating mirror	Glass	✓	CLV692-1001	1056611
				-	CLV692-1000	1056609
≤ 2,100 mm	0.35 mm ... 1.2 mm	Oscillating mirror	Glass	✓	CLV691-1001	1056607
				-		
	0.3 mm ... 1 mm	Line scanner	Glass	✓	CLV690-0001	1056602
				-	CLV690-0000	1056600
		Oscillating mirror	Glass	✓	CLV690-1001	1056603
				-	CLV690-1000	1056601
Plastic			-	CLV690-0010	1056614	
≤ 2,200 mm	0.35 mm ... 1.2 mm	Line scanner	Glass	✓	CLV691-0001	1056606
				-	CLV691-0000	1056604
		Oscillating mirror	Glass	-	CLV691-1000	1056605

## SICK AT A GLANCE

SICK is one of the leading manufacturers of intelligent sensors and sensor solutions for industrial applications. A unique range of products and services creates the perfect basis for controlling processes securely and efficiently, protecting individuals from accidents and preventing damage to the environment.

We have extensive experience in a wide range of industries and understand their processes and requirements. With intelligent sensors, we can deliver exactly what our customers need. In application centers in Europe, Asia and North America, system solutions are tested and optimized in accordance with customer specifications. All this makes us a reliable supplier and development partner.

Comprehensive services complete our offering: SICK LifeTime Services provide support throughout the machine life cycle and ensure safety and productivity.

For us, that is “Sensor Intelligence.”

## WORLDWIDE PRESENCE:

Contacts and other locations –[www.sick.com](http://www.sick.com)