



DT20-P224B

DT20 Hi

DISPLACEMENT MEASUREMENT SENSORS

SICK
Sensor Intelligence.



Ordering information

Type	Part no.
DT20-P224B	1040405

Other models and accessories → www.sick.com/DT20_Hi



Detailed technical data

Features

Measuring range	100 mm ... 1,000 mm ¹⁾				
Target	Natural objects				
Repeatability	≥ 2.5 mm ^{1) 2) 3) 4)}				
Linearity	± 6 mm ^{3) 4) 5)}				
Response time	≥ 2.5 ms ²⁾				
Output time	≥ 2.5 ms				
Light source	Laser, red visible red light				
Type of light	Visible red light				
Laser class	2 (IEC 60825-1:2014, EN 60825-1:2014)				
Typ. light spot size (distance)	6 mm x 12 mm (1000 mm)				
Additional function	Set moving average fast/medium/slow Switching mode: distance to object (DtO) Teach-in of digital output Invertable digital output Teach-in of analog output Invertable analog output Multifunctional input: laser off / external teach-in / deactivated Switch-off display Lock user interface				
Safety-related parameters	<table border="0"> <tr> <td style="text-align: right;">MTTF_D</td> <td>101 years</td> </tr> <tr> <td style="text-align: right;">DC_{avg}</td> <td>0%</td> </tr> </table>	MTTF _D	101 years	DC _{avg}	0%
MTTF _D	101 years				
DC _{avg}	0%				

¹⁾ 6% ... 90% remission factor.

²⁾ Dependent on the set average or sensitivity.

³⁾ When calibrated in the application regularly.

⁴⁾ The models with measuring range of 100 mm ... 1,000 mm meets the specification of the models with measuring range of 100 mm ... 1,000 mm for distances < 600 mm.

⁵⁾ 90% remission factor.

Interfaces

Digital output	
Number	1 ¹⁾
Type	PNP
Maximum output current I_A	≤ 100 mA
Analog output	
Number	1
Type	Current output
Current	4 mA ... 20 mA, $\leq 300 \Omega$
Resolution	12 bit
Multifunctional input (MF)	1 x MF ²⁾

¹⁾ PNP: HIGH = $V_S - (< 2 V)$ / LOW = $< 2 V$; NPN: HIGH = $< 2 V$ / LOW = V_S .

²⁾ MF can be used as laser-off, external teach-in or deactivated.

Electronics

Supply voltage U_B	DC 10 V ... 30 V ¹⁾
Power consumption	≤ 1.8 W ²⁾
Ripple	$\leq 5 V_{pp}$ ³⁾
Warm-up time	≤ 10 min
Indication	LC display, 2 x LED
Enclosure rating	IP65 (EN 60529)
Protection class	II

¹⁾ Limit values, reverse-polarity protected, operation in short-circuit protected network: max. 8 A.

²⁾ Without load.

³⁾ May not fall short of or exceed V_S tolerances.

Mechanics

Dimensions (W x H x D)	24.3 mm x 72.4 mm x 54.1 mm
Housing material	Metal (zinc diecast)
Window material	Plastic (PMMA)
Weight	135 g
Connection type	Male connector, M12, 5-pin, swivel connector unit

Ambient data

Ambient temperature, operation	-20 °C ... +55 °C, Operating temperature at $V_S = 24 V$
Ambient temperature, storage	-20 °C ... +60 °C
Temperature drift	0.25 mm/K ¹⁾
Typ. Ambient light immunity	Artificial light: $\leq 3,000$ lx Sunlight: $\leq 10,000$ lx
Vibration resistance	EN 60068-2-6, EN 60068-2-64
Shock resistance	EN 60068-2-27

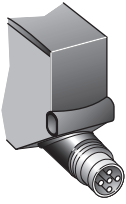
¹⁾ 0,5 mm/K: for distances > 600 mm.

Classifications

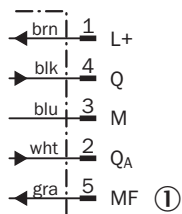
ECLASS 5.0	27270801
-------------------	----------

Connection type

Male connector M12, 5-pin

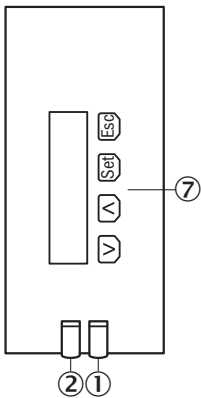


Connection diagram



① Multifunctional input (MF)



Adjustment possible



- ① Status display for supply voltage active (green)
- ② Status indicator digital output (orange)
- ⑦ Control elements and display

Recommended accessories

Other models and accessories → www.sick.com/DT20_Hi

	Brief description	Type	Part no.
Mounting brackets and plates			
	Mounting bracket, stainless steel, without mounting material, for DT20 Hi, without mounting hardware	BEF-WN-DT20	4043524
Others			
	<ul style="list-style-type: none"> • Connection type head A: Female connector, M12, 5-pin, straight, A-coded • Connection type head B: Flying leads • Signal type: Sensor/actuator cable • Cable: 2 m, 5-wire, PVC • Description: Sensor/actuator cable, unshielded • Application: Zones with chemicals 	YF2A15-020VB5XLEAX	2096239

Recommended services

Additional services → www.sick.com/DT20_Hi

	Type	Part no.
Commissioning		
<ul style="list-style-type: none"> • Product area: Displacement measurement sensors • Range of services: Inspection of connection and mounting, optimization of parameters of SICK product as well as tests, set-up of previously defined functions of the scaling of the analog measuring range, switching point position, hysteresis, measuring frequency, measured value filter, signal quality, evaluation function, or communication interface • Travel expenses: The prices do not include travel costs such as hotel, flight, travel time and expenses. • Duration: Additional work will be invoiced separately 	DT20 Hi/OD/OL commissioning	1612241

SICK AT A GLANCE

SICK is one of the leading manufacturers of intelligent sensors and sensor solutions for industrial applications. A unique range of products and services creates the perfect basis for controlling processes securely and efficiently, protecting individuals from accidents and preventing damage to the environment.

We have extensive experience in a wide range of industries and understand their processes and requirements. With intelligent sensors, we can deliver exactly what our customers need. In application centers in Europe, Asia and North America, system solutions are tested and optimized in accordance with customer specifications. All this makes us a reliable supplier and development partner.

Comprehensive services complete our offering: SICK LifeTime Services provide support throughout the machine life cycle and ensure safety and productivity.

For us, that is “Sensor Intelligence.”

WORLDWIDE PRESENCE:

Contacts and other locations –www.sick.com