



EG342C-81B001012059

EG34x

ABSOLUTE ENCODERS

SICK
Sensor Intelligence.



Illustration may differ



Ordering information

Type	Part no.
EG342C-81B001012059	1124604

Other models and accessories → www.sick.com/EG34x

Detailed technical data

Features

Weight	1.5 kg
Number of independently adjustable switching contacts	4
Operating speed	≤ 6,000 min ⁻¹
Permissible shaft loading	200 N / radial 200 N / axial
Total transmission ratio	4.580/1
Working range	3,400 Revolutions
Repeatability of the switching points	< 20°
Switching hystereses	< 150°
Switching cam length	1,150 revolutions
Positive opening	1 revolution
Actuation frequency	≤ 200 min ⁻¹
Operating temperature range	0 °C ... +70 °C
Storage temperature range	0 °C ... +85 °C
Resistance to shocks	30 g, 11 ms, Single shock (EN 60068-2-27) 10 g, 16 ms, Continuous shock (EN 60068-2-27)
Resistance to vibration	0.03 g ² , 10 Hz ... 200 Hz (EN 60068-2-6) 0.01 g ² , 200 Hz ... 2,000 Hz (EN 60068-2-6)
Enclosure rating	IP65 (IEC 60529) ¹⁾ IP67 (IEC 60529) ¹⁾
Supply voltage	24 V ²⁾
Rated current	2 A
Protection class	III (according to DIN EN 61140) ²⁾

¹⁾ With mating connector fitted.

²⁾ The supply voltage must be generated by safety extra-low voltage (SELV/PELV) systems.

Performance

Repeatability standard deviation σ_r	< 20°
---	-------

Electrical data

Supply voltage	≤ 24 V ¹⁾
-----------------------	----------------------

¹⁾ The supply voltage must be generated by safety extra-low voltage (SELV/PELV) systems.

Mechanical data

Weight	1.5 kg
Permissible shaft loading	200 N (radial) 200 N (axial)
Operating speed	≤ 6,000 min ⁻¹

Ambient data

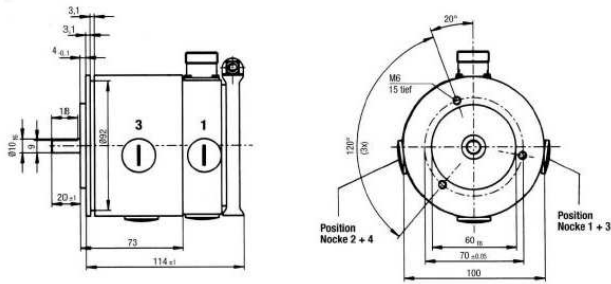
Enclosure rating	IP65 (IEC 60529) ¹⁾ IP67 (IEC 60529) ¹⁾
Operating temperature range	0 °C ... +70 °C
Storage temperature range	0 °C ... +85 °C
Resistance to shocks	30 g, 11 ms, Single shock (EN 60068-2-27) 10 g, 16 ms, Continuous shock (EN 60068-2-27)
Resistance to vibration	0.03 g ² , 10 Hz ... 200 Hz (EN 60068-2-6) 0.01 g ² , 200 Hz ... 2,000 Hz (EN 60068-2-6)
Protection class	III (according to DIN EN 61140)

¹⁾ With mating connector fitted.

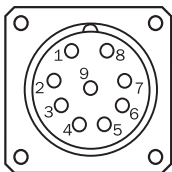
Classifications

ECLASS 5.0	27270502
ECLASS 5.1.4	27270502
ECLASS 6.0	27270590
ECLASS 6.2	27270590
ECLASS 7.0	27270502
ECLASS 8.0	27270502
ECLASS 8.1	27270502
ECLASS 9.0	27270502
ECLASS 10.0	27270502
ECLASS 11.0	27270502
ECLASS 12.0	27270502
ETIM 5.0	EC001486
ETIM 6.0	EC001486
ETIM 7.0	EC001486
ETIM 8.0	EC001486
UNSPSC 16.0901	41112113

Dimensional drawing (Dimensions in mm (inch))




PIN assignment



Recommended accessories

Other models and accessories → www.sick.com/EG34x

	Brief description	Type	Part no.
Others			
	<ul style="list-style-type: none"> • Connection type head A: Female connector, M23, 9-pin, straight, A-coded • Signal type: HIPERFACE®, SSI, Incremental • Description: HIPERFACE®, SSI, Incremental, shielded, Head A: female connector, M23, 9-pin, straight, shielded, for cable diameter 5.5 mm ... 10.5 mm Head B: Operating temperature: -20 °C ... +130 °C • Connection systems: Solder connection 	DOS-2309-G	6028533

SICK AT A GLANCE

SICK is one of the leading manufacturers of intelligent sensors and sensor solutions for industrial applications. A unique range of products and services creates the perfect basis for controlling processes securely and efficiently, protecting individuals from accidents and preventing damage to the environment.

We have extensive experience in a wide range of industries and understand their processes and requirements. With intelligent sensors, we can deliver exactly what our customers need. In application centers in Europe, Asia and North America, system solutions are tested and optimized in accordance with customer specifications. All this makes us a reliable supplier and development partner.

Comprehensive services complete our offering: SICK LifeTime Services provide support throughout the machine life cycle and ensure safety and productivity.

For us, that is “Sensor Intelligence.”

WORLDWIDE PRESENCE:

Contacts and other locations –www.sick.com