



## Flexi Compact

Safety under control – compact, easy and efficient

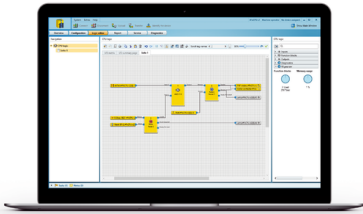
**SICK**  
Sensor Intelligence.

## Advantages

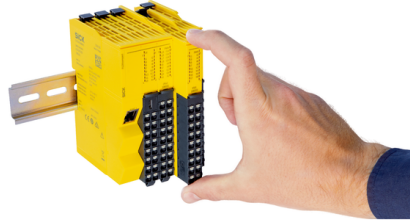


## See the improved user-friendliness for yourself

Using the intuitive Safety Designer configuration software, you can plan the entire safety application in just a few minutes. Furthermore, the user-friendly housing with intelligent functions makes operating the device significantly easier.



Because project planning work is costly – the intuitive Safety Designer software for fast configuration



Because easy installation saves time – intelligent housing functions for maximum user-friendliness



Because production cannot wait – smart gateways for fast device setup



## Time-saving project planning and simple commissioning for cost-effective engineering



## Increase your productivity

With Flexi Compact, you will benefit from easy configuration and commissioning, efficient machine operation, right through to fast maintenance and diagnostics throughout the entire machine life cycle.

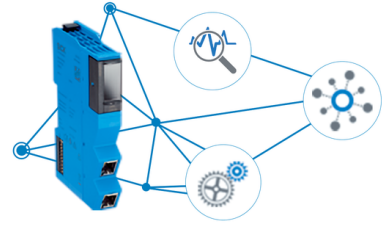


Fast shut-off  
4,5 ms

Because productivity is paramount – fast response times for short cycle times



Because fast troubleshooting reduces downtimes – easy HMI integration for direct on-site analysis



Because data provides insights - continuous data availability for optimized processes



## Fast production start and efficient machine and system operation



## Rely on a safe future

With Flexi Compact, you will stay on the safe side even in the future thanks to forward-looking technologies, a modular platform for highly flexible solutions, and gateways for seamless data availability in your application.



Because every application is different – modularity for high flexibility and adaptability



Because the requirements are increasing – Safety-over-EtherCAT® backplane bus for efficient data exchange



Because digitalization offers new opportunities – gateways for direct network integration



## The Flexi Compact is your companion on the path to the industry of tomorrow



## Technical data overview

<b>Safety level</b>	PL e, SIL 3
<b>Configuration method</b>	Via software (Safety Designer)
<b>System construction</b>	Modular 1 main module 0 ... 12 expansion modules (excluding maximum 1 gateway)
<b>Fieldbus, industrial network</b>	Modbus, CANopen, EtherCAT <sup>®</sup> , PROFINET (depending on type)
<b>Safe series connection with Flexi Loop</b>	Flexi Loop



## Product description

The Flexi Compact safety controller is based on a future-proof technology platform and can be programmed via software. Thanks to its modularity, it can be optimally configured for a wide range of application requirements and its compact construction means it can be installed in tight spaces. Flexi Compact is characterized by its high usability: planning and commissioning is fast and easy using the intuitive Safety Designer configuration software and a user-friendly housing. Diagnostics data is available for common fieldbus systems. Faster production startup, increased machine availability, and extended functions such as safe series connection with Flexi Loop increase productivity and efficiency throughout the machine life cycle.

## At a glance

- Software-programmable safety controller with modular hardware platform
- High performance Safety over EtherCAT<sup>®</sup> backplane bus
- User-friendly housing in a slim design
- Intuitive Safety Designer configuration software
- Data communication in common fieldbus systems
- Safe series connection with Flexi Loop

## Your benefits

- Usability optimized: time-saving planning of the safety application and easy commissioning
- Efficiency increased: higher productivity thanks to fast production startup, short response times, and comprehensive diagnostic options for efficient machine and system operation
- Guaranteed future-proof: flexible solutions with modular hardware, forward-looking technologies, and end-to-end data availability

## Fields of application

- Machines requiring average to complex safety logic
- Machines with a large number of doors, flaps or decentralized safety paths requiring protection, such as packaging machines

## Ordering information

Other models and accessories → [www.sick.com/Flexi\\_Compact](http://www.sick.com/Flexi_Compact)

### Main modules

Connection type	Inputs/outputs	Fieldbus	Type	Part no.
Front connector with spring terminals	20 safety capable inputs 4 safety outputs 8 test outputs	-	FLX3-CPUC100	1085349
		Modbus <sup>®</sup> TCP	FLX3-CPUC200	1085351

### I/O modules

Connection type	Inputs/outputs	Type	Part no.
Front connector with spring terminals	8 safety inputs 8 safety outputs	FLX3-XTD0100	1085354
	8 safety inputs 8 test outputs	FLX3-XTDI100	1085353

### Gateways

Fieldbus	Type	Part no.
CANopen	FLX0-GCAN100	1085363
EtherCAT <sup>®</sup>	FLX0-GETC100	1085357
PROFINET TCP/IP sockets	FLX0-GPNT100	1085356

## SICK AT A GLANCE

SICK is one of the leading manufacturers of intelligent sensors and sensor solutions for industrial applications. A unique range of products and services creates the perfect basis for controlling processes securely and efficiently, protecting individuals from accidents and preventing damage to the environment.

We have extensive experience in a wide range of industries and understand their processes and requirements. With intelligent sensors, we can deliver exactly what our customers need. In application centers in Europe, Asia and North America, system solutions are tested and optimized in accordance with customer specifications. All this makes us a reliable supplier and development partner.

Comprehensive services complete our offering: SICK LifeTime Services provide support throughout the machine life cycle and ensure safety and productivity.

For us, that is “Sensor Intelligence.”

## WORLDWIDE PRESENCE:

Contacts and other locations –[www.sick.com](http://www.sick.com)