

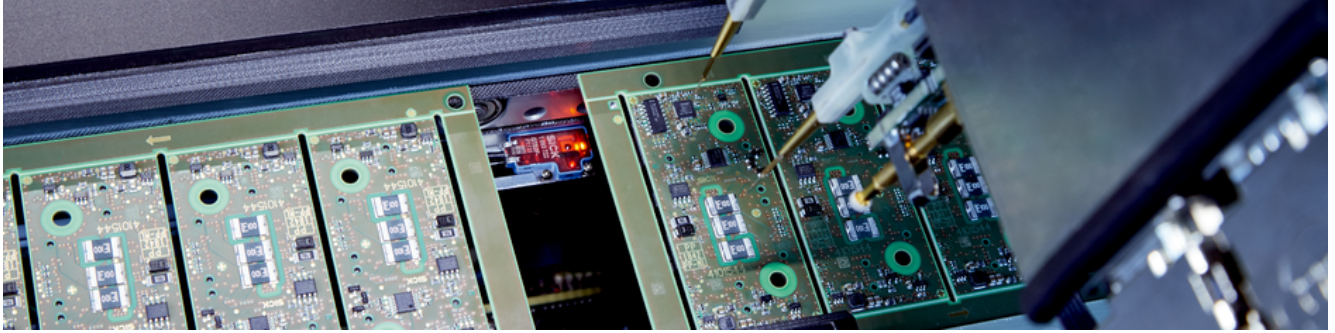


G2

Cost-efficient miniature photoelectric sensor for use in tight installation spaces

SICK
Sensor Intelligence.

Advantages

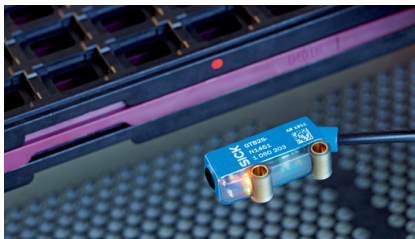


Economic solution for use in tight installation space

Machines and systems are becoming more and more compact. The space available for the sensor technology is also reduced accordingly. The miniature photoelectric sensors of the G2 product family are available in either slim or flat housing variants, making them particularly flexible to install – without sacrificing object detection or the rugged design of the housing.



The compact sensor housing can be easily integrated, even in very tight spots



The powerful background suppression enables reliable object detection



The sensors are versatile, low-maintenance and durable thanks to the rugged design



Technical data overview

Dimensions (W x H x D)	14 mm x 24 mm x 3.5 mm 10 mm x 27 mm x 3.5 mm 4.5 mm x 21 mm x 11 mm 7.7 mm x 21.8 mm x 13.5 mm 7.7 mm x 27.5 mm x 13.5 mm
Functional principle detail	Background suppression Energetic With minimum distance to reflector (dual lens system) (depending on type)
Light source	PinPoint LED / LED (depending on type)
Type of light	Visible red light Visible blue light Infrared light (depending on type)
Enclosure rating	IP67
Housing material	Plastic
Adjustment	None / Potentiometer (depending on type)

Product description

Miniature photoelectric sensors of the G2 product family impress with their cost efficiency, small size and rugged sensor housing. The G2 is available in either slim or flat housing versions and can be easily integrated into small machines and very tight installation spaces. This means it offers a wide range of application possibilities. Thanks to the powerful background suppression, the sensors also offer reliable object detection. G2 photoelectric sensors can be installed quickly and easily, meaning they are very user-friendly.

At a glance

- Miniature housing: available either as G2 Slim or G2 Flat
- Powerful background suppression
- Rugged sensor housing

Your benefits

- Space-saving integration in compact machines and very tight installation spaces
- Reliable detection status
- Versatile application possibilities
- Quick and easy mounting, commissioning and maintenance
- Cost-efficient solution

Ordering information

Other models and accessories → www.sick.com/G2

- **Functional principle:** Photoelectric proximity sensor
- **Functional principle detail:** Background suppression
- **Light source:** PinPoint LED
- **Voltage type:** DC
- **Switching mode:** Dark switching
- **Type of light:** visible red light

Sensing range max.	Switching output	Adjustment	Connection type	Type	Part no.
1 mm ... 18 mm	NPN	None	Cable with connector M8, 3-pin, 200 mm ¹⁾	GTB2F-E5111	1093742
			Cable, 3-wire, 2 m ¹⁾	GTB2F-E1111	1093736
	PNP	None	Cable with connector M8, 3-pin, 200 mm ¹⁾	GTB2S-E1311	1064348
				GTB2F-F5111	1093739
			Cable, 3-wire, 2 m ¹⁾	GTB2S-F5311	1064347
				GTB2F-F1111	1093733
1 mm ... 35 mm	NPN	None	Cable with connector M8, 3-pin, 200 mm ¹⁾	GTB2S-F1311	1064346
			Cable, 3-wire, 2 m ¹⁾	GTB2F-E5131	1093743
	PNP	None	Cable with connector M8, 3-pin, 200 mm ¹⁾	GTB2F-E1131	1093737
			Cable, 3-wire, 2 m ¹⁾	GTB2F-F5131	1093740
1 mm ... 36 mm	NPN	None	Cable with connector M8, 3-pin, 200 mm ¹⁾	GTB2F-F1131	1093734
			Cable, 3-wire, 2 m ¹⁾	GTB2S-E1331	1064354
	PNP	None	Cable with connector M8, 3-pin, 200 mm ¹⁾	GTB2S-F5331	1064353
1 mm ... 9 mm	NPN	None	Cable with connector M8, 3-pin, 200 mm ¹⁾	GTB2S-F1331	1064352
			Cable, 3-wire, 2 m ¹⁾	GTB2F-E5141	1093744
	PNP	None	Cable with connector M8, 3-pin, 200 mm ¹⁾	GTB2F-E1141	1093738
				GTB2F-F5141	1093741
			Cable, 3-wire, 2 m ¹⁾	GTB2F-F1141	1093735
				GTB2S-E5451	1064344
2 mm ... 120 mm	NPN	Potentiometer	Cable with connector M8, 3-pin, 200 mm ¹⁾	GTB2S-E1451	1064342
			Cable, 3-wire, 2 m ¹⁾	GTB2S-F5451	1064341
	PNP	Potentiometer	Cable with connector M8, 3-pin, 200 mm ¹⁾	GTB2S-F1451	1064340
			Cable, 3-wire, 2 m ¹⁾		

¹⁾ Do not bend below 0 °C.

- **Functional principle:** Photoelectric proximity sensor
- **Functional principle detail:** Background suppression
- **Light source:** PinPoint LED
- **Voltage type:** DC
- **Switching mode:** Dark switching
- **Type of light:** visible blue light

Sensing range max.	Switching output	Adjustment	Connection type	Type	Part no.
0.5 mm ... 34 mm	NPN	None	Cable, 3-wire, 2 m ¹⁾	GTB2F-E1331	1135704
0 mm ... 16 mm	PNP	None	Cable, 3-wire, 2 m ¹⁾	GTB2F-E1311	1146264
0 mm ... 9 mm	NPN	None	Cable, 3-wire, 2 m ¹⁾	GTB2F-E1341	1112800
	PNP	None	Cable, 3-wire, 2 m ¹⁾	GTB2F-F1341	1120805

¹⁾ Do not bend below 0 °C.

- **Functional principle:** Photoelectric proximity sensor
- **Functional principle detail:** Background suppression
- **Light source:** PinPoint LED
- **Voltage type:** DC
- **Switching mode:** Light switching
- **Type of light:** visible red light

Sensing range max.	Switching output	Adjustment	Connection type	Type	Part no.	
1 mm ... 18 mm	NPN	None	Cable with connector M8, 3-pin, 200 mm ¹⁾	GTB2F-N5111	1093730	
				GTB2S-N5311	1064349	
			Cable, 3-wire, 2 m ¹⁾	GTB2F-N1111	1093724	
				GTB2S-N1311	1062840	
	PNP	None	Cable with connector M8, 3-pin, 200 mm ¹⁾	GTB2F-P5111	1093727	
				GTB2S-P5311	1062872	
			Cable with connector, JST, XHR-3, 3-pin, 0.06 m ¹⁾	GTB2S-P0311S14	1115899	
				Cable, 3-wire, 2 m ¹⁾	GTB2F-P1111	1093721
GTB2S-P1311	1064345					
1 mm ... 31 mm	PNP	None	Cable with connector M8, 3-pin, 200 mm ¹⁾	GTB2F-P5101S08	1114185	
1 mm ... 35 mm	NPN	None	Cable with connector M8, 3-pin, 200 mm ¹⁾	GTB2F-N5131	1093731	
				Cable, 3-wire, 2 m ¹⁾	GTB2F-N1131	1093725
	PNP	None	Cable with M8 male connector, 4-pin, 200 mm ¹⁾	GTB2F-P0131S11	1143272	
				Cable with connector M8, 3-pin, 200 mm ¹⁾	GTB2F-P5131	1093728
					Cable, 3-wire, 2 m ¹⁾	GTB2F-P1131

¹⁾ Do not bend below 0 °C.

Sensing range max.	Switching output	Adjustment	Connection type	Type	Part no.
1 mm ... 36 mm	NPN	None	Cable with connector M8, 3-pin, 200 mm ¹⁾	GTB2S-N5331	1064355
			Cable, 3-wire, 2 m ¹⁾	GTB2S-N1331	1062929
	PNP	None	Cable with connector M8, 3-pin, 200 mm ¹⁾	GTB2S-P5331	1062930
			Cable, 3-wire, 2 m ¹⁾	GTB2S-P1331	1064351
			Cable, 3-wire, 5 m ¹⁾	GTB2S-P0331S03	1074990
1 mm ... 9 mm	NPN	None	Cable with connector M8, 3-pin, 200 mm ¹⁾	GTB2F-N5141	1093732
			Cable, 3-wire, 2 m ¹⁾	GTB2F-N1141	1093726
	PNP	None	Cable with connector M8, 3-pin, 200 mm ¹⁾	GTB2F-P5141	1093729
			Cable, 3-wire, 2 m ¹⁾	GTB2F-P1141	1093723
2 mm ... 120 mm	NPN	Potentiometer	Cable with connector M8, 3-pin, 200 mm ¹⁾	GTB2S-N5451	1064343
			Cable, 3-wire, 2 m ¹⁾	GTB2S-N1451	1060203
	PNP	Potentiometer	Cable with connector M8, 3-pin, 200 mm ¹⁾	GTB2S-P5451	1060204
			Cable with connector, JST, 3-pin, 60 mm ¹⁾	GTB2S-P0451S16	1119180
			Cable, 3-wire, 2 m ¹⁾	GTB2S-P1451	1060205
5 mm ... 19 mm	PNP	None	Cable, 3-wire, 2 m ¹⁾	GTB2S-P1301S13	1112957

¹⁾ Do not bend below 0 °C.

- **Functional principle:** Photoelectric proximity sensor
- **Functional principle detail:** Background suppression
- **Light source:** PinPoint LED
- **Voltage type:** DC
- **Switching mode:** Light switching
- **Type of light:** visible blue light

Sensing range max.	Switching output	Adjustment	Connection type	Type	Part no.
0 mm ... 16 mm	NPN	None	Cable, 3-wire, 2 m ¹⁾	GTB2F-N1311	1112239
	PNP	None	Cable, 3-wire, 2 m ¹⁾	GTB2F-P1311	1132766
0 mm ... 9 mm	NPN	None	Cable, 3-wire, 2 m ¹⁾	GTB2F-N1341	1110117
	PNP	None	Cable, 3-wire, 2 m ¹⁾	GTB2F-P1341	1113493

¹⁾ Do not bend below 0 °C.

- **Functional principle:** Photoelectric proximity sensor
- **Functional principle detail:** Energetic
- **Light source:** PinPoint LED
- **Voltage type:** DC
- **Switching mode:** Dark switching
- **Type of light:** visible red light

Sensing range max.	Switching output	Adjustment	Connection type	Type	Part no.
1.5 mm ... 15 mm	NPN	None	Cable with connector M8, 3-pin, 200 mm ¹⁾	GTE2F-E5111	1108576
			Cable, 3-wire, 2 m ¹⁾	GTE2F-E1111	1108574
	PNP	None	Cable with connector M8, 3-pin, 200 mm ¹⁾	GTE2F-F5111	1108575
			Cable, 3-wire, 2 m ¹⁾	GTE2F-F1111	1108573
1 mm ... 30 mm	NPN	None	Cable with connector M8, 3-pin, 200 mm ¹⁾	GTE2F-E5131	1108572
			Cable, 3-wire, 2 m ¹⁾	GTE2F-E1131	1108570
	PNP	None	Cable with connector M8, 3-pin, 200 mm ¹⁾	GTE2F-F5131	1108571
			Cable, 3-wire, 2 m ¹⁾	GTE2F-F1131	1108569

¹⁾ Do not bend below 0 °C.

- **Functional principle:** Photoelectric proximity sensor
- **Functional principle detail:** Energetic
- **Light source:** PinPoint LED
- **Voltage type:** DC
- **Switching mode:** Light switching
- **Type of light:** visible red light

Sensing range max.	Switching output	Adjustment	Connection type	Type	Part no.
1.5 mm ... 15 mm	NPN	None	Cable with connector M8, 3-pin, 200 mm ¹⁾	GTE2F-N5111	1108482
			Cable, 3-wire, 2 m ¹⁾	GTE2F-N1111	1108480
	PNP	None	Cable with M8 male connector, 4-pin, 200 mm ¹⁾	GTE2F-P0111S04	1108484
			Cable with connector M8, 3-pin, 200 mm ¹⁾	GTE2F-P5111	1108481
			Cable, 3-wire, 2 m ¹⁾	GTE2F-P1111	1108479
1 mm ... 30 mm	NPN	None	Cable with connector M8, 3-pin, 200 mm ¹⁾	GTE2F-N5131	1108126
			Cable, 3-wire, 2 m ¹⁾	GTE2F-N1131	1108124
	PNP	None	Cable with M8 male connector, 4-pin, 200 mm ¹⁾	GTE2F-P0131S09	1122283
			Cable with connector M8, 3-pin, 200 mm ¹⁾	GTE2F-P5131	1108125
			Cable, 3-wire, 2 m ¹⁾	GTE2F-P1131	1108123

¹⁾ Do not bend below 0 °C.

- **Functional principle:** Through-beam photoelectric sensor
- **Light source:** PinPoint LED
- **Voltage type:** DC
- **Switching mode:** Dark switching
- **Type of light:** visible red light

Sensing range max.	Switching output	Adjustment	Connection type	Type	Part no.
0 m ... 2 m	NPN	None	Cable (TPU) with JST connector, 2 wire for sender and 3 wire for receiver, 250 mm	GSE2S-E0311S10	1125387
			Cable with connector M8, 3-pin, 200 mm ¹⁾	GSE2S-E5311	1064366
			Cable, 3-wire, 2 m ¹⁾	GSE2S-E1311	1063070
			Cable with special connector Typ 3M (37104-4101-G00 FL), 3-wire, 0.25 m ²⁾	GSE2S-E0311S07	1117064
	PNP	None	Cable with connector M8, 3-pin, 200 mm ¹⁾	GSE2S-F5311	1063072
			Cable, 3-wire, 2 m ¹⁾	GSE2S-F1311	1064363

¹⁾ Do not bend below 0 °C.

²⁾ Do not bend below 0 °C, operating temperature of the male connector is -20 °C ... +50 °C.

Sensing range max.	Switching output	Adjustment	Connection type	Type	Part no.		
0 mm ... 1,300 mm	NPN	None	Cable, 3-wire, 2,000 mm ¹⁾	GSE2FS-E1161S17	1124302		
				GSE2FS-E1162	1113779		
			Cable, 3-wire, 2 m ¹⁾	GSE2F-E1161	1118585		
				GSE2FS-E1161	1121030		
0 mm ... 200 mm	NPN	None	Cable with connector M8, 3-pin, 200 mm ¹⁾	GSE2F-E5121	1095456		
				GSE2FS-E5121	1095482		
			Cable, 3-wire, 2 m ¹⁾	GSE2F-E1121	1095444		
		GSE2FS-E1121		1095470			
		PNP	None	Cable with connector M8, 3-pin, 200 mm ¹⁾	GSE2F-F5121	1095453	
					GSE2FS-F5121	1095479	
	Cable with male connector M8, 3 pin (common male connector for sender and receiver), 500 mm ¹⁾			GSE2F-F0121S13	1113669		
				GSE2FS-F0121S14	1113670		
	Cable with male connector M8, 4 pin (common male connector for sender and receiver), 500 mm ¹⁾			GSE2F-F0121S12	1110900		
				GSE2FS-F0121S11	1110899		
	0 mm ... 60 mm	NPN	None	Cable with connector M8, 3-pin, 200 mm ¹⁾	GSE2F-E5111	1095455	
					GSE2FS-E5111	1095481	
Cable, 3-wire, 2 m ¹⁾				GSE2F-E1111	1095443		
				GSE2FS-E1111	1095469		
PNP				None	Cable with connector M8, 3-pin, 200 mm ¹⁾	GSE2F-F5111	1095452
						GSE2FS-F5111	1095478
		Cable, 3-wire, 2 m ¹⁾	GSE2F-F1011S19		1126583		
			GSE2F-F1111		1095440		
			GSE2FS-F1111		1095466		

¹⁾ Do not bend below 0 °C.

²⁾ Do not bend below 0 °C, operating temperature of the male connector is -20 °C ... +50 °C.

Sensing range max.	Switching output	Adjustment	Connection type	Type	Part no.
0 mm ... 700 mm	NPN	None	Cable with connector M8, 3-pin, 200 mm ¹⁾	GSE2F-E5151	1095457
				GSE2FS-E5151	1095483
			Cable, 3-wire, 2 m ¹⁾	GSE2F-E1151	1095445
				GSE2FS-E1151	1095471
				GSE2FS-E1151S16	1124211
	Cable with male connector, MOLEX 2-pin (GS), 3-pin (GE), 300 mm ¹⁾	GSE2F-E0151S22	1136928		
	PNP	None	Cable with connector M8, 3-pin, 200 mm ¹⁾	GSE2F-F5151	1095454
				GSE2FS-F5151	1095480
			Cable, 3-wire, 2 m ¹⁾	GSE2F-F1151	1095442
				GSE2FS-F1151	1095468

¹⁾ Do not bend below 0 °C.

²⁾ Do not bend below 0 °C, operating temperature of the male connector is -20 °C ... +50 °C.

- **Functional principle:** Through-beam photoelectric sensor
- **Light source:** PinPoint LED
- **Voltage type:** DC
- **Switching mode:** Light switching
- **Type of light:** visible red light

Sensing range max.	Switching output	Adjustment	Connection type	Type	Part no.
0 m ... 2 m	NPN	None	Cable, 3-wire, 2 m ¹⁾	GSE2S-N1311	1064365
	PNP	None	Cable with connector M8, 3-pin, 200 mm ¹⁾	GSE2S-P5311	1064364
			Cable with connector M8, 3-pin, 500 mm ¹⁾	GSE2S-P0311S06	1103167
			Cable, 3-wire, 2 m ¹⁾	GSE2S-P1311	1064362
0 mm ... 1,300 mm	NPN	None	Cable, 3-wire, 2 m ¹⁾	GSE2F-N1161	1106521
			Cable, 3-wire, 2 m ¹⁾	GSE2FS-N1161	1119049
		Cable, 3-wire, 500 mm ¹⁾	GSE2FS-N0162S01	1100225	
	PNP	None	Cable with connector M8, 3-pin, 200 mm ¹⁾	GSE2F-P5161	1125057
			Cable, 3-wire, 2 m ¹⁾	GSE2F-P1161	1114856
				GSE2FS-P1161	1106098

¹⁾ Do not bend below 0 °C.

Sensing range max.	Switching output	Adjustment	Connection type	Type	Part no.
0 mm ... 200 mm	NPN	None	Cable with connector M8, 3-pin, 200 mm ¹⁾	GSE2F-N5121	1095450
				GSE2FS-N5121	1095476
			Cable, 3-wire, 2 m ¹⁾	GSE2F-N1121	1095438
				GSE2FS-N1121	1095464
	PNP	None	Cable with connector M8, 3-pin, 200 mm ¹⁾	GSE2F-P5121	1095447
				GSE2FS-P5121	1095473
			Cable, 3-wire, 2 m ¹⁾	GSE2F-P1121	1095435
				GSE2FS-P1121	1095461
0 mm ... 60 mm	NPN	None	Cable with connector M8, 3-pin, 200 mm ¹⁾	GSE2F-N5111	1095449
				GSE2FS-N5111	1095475
			Cable, 3-wire, 2 m ¹⁾	GSE2F-N1111	1095437
				GSE2FS-N1111	1095463
	PNP	None	Cable with connector M8, 3-pin, 200 mm ¹⁾	GSE2F-P5111	1095446
				GSE2FS-P5111	1095472
			Cable with male connector M8, 4 pin (common male connector for sender and receiver), 200 mm ¹⁾	GSE2F-P0110P01	1123327
				Cable, 3-wire, 2 m ¹⁾	GSE2F-P1111
GSE2FS-P1111	1095459				
0 mm ... 700 mm	NPN	None	Cable with connector M8, 3-pin, 200 mm ¹⁾	GSE2F-N5151	1095451
				GSE2FS-N5151	1095477
			Cable, 3-wire, 2 m ¹⁾	GSE2F-N1151	1095439
				GSE2FS-N1151	1095465
	PNP	None	Cable with connector M8, 3-pin, 200 mm ¹⁾	GSE2F-P5151	1095448
				GSE2FS-P5151	1095474
			Cable, 3-wire, 2 m ¹⁾	GSE2F-P1151	1095436
				GSE2FS-P1151	1095462

¹⁾ Do not bend below 0 °C.

- **Functional principle:** Through-beam photoelectric sensor
- **Light source:** LED
- **Voltage type:** DC
- **Switching mode:** Dark switching
- **Type of light:** visible red light

Sensing range max.	Switching output	Adjustment	Connection type	Type	Part no.
0 mm ... 200 mm	NPN	None	Cable, 3-wire, 2 m ¹⁾	GSE2FS-E1021S23	1145315
0 mm ... 600 mm	NPN	None	Cable, 3-wire, 2 m ¹⁾	GSE2FS-E1000S21	1126672
0 mm ... 60 mm	NPN	None	Cable, 3-wire, 2 m ¹⁾	GSE2FS-E1011S20	1126654

¹⁾ Do not bend below 0 °C.

- **Functional principle:** Photoelectric proximity sensor
- **Functional principle detail:** Background suppression
- **Light source:** LED
- **Voltage type:** DC
- **Switching mode:** Dark switching
- **Type of light:** Infrared light

Sensing range max.	Switching output	Adjustment	Connection type	Type	Part no.
1 mm ... 19 mm	NPN	None	Cable, 3-wire, 2 m ¹⁾	GTB2S-E1301S07	1090217

¹⁾ Do not bend below 0 °C.

- **Functional principle:** Photoelectric proximity sensor
- **Functional principle detail:** Background suppression
- **Light source:** LED
- **Voltage type:** DC
- **Switching mode:** Light switching
- **Type of light:** Infrared light

Sensing range max.	Switching output	Adjustment	Connection type	Type	Part no.
1 mm ... 19 mm	NPN	None	Cable, 3-wire, 2 m ¹⁾	GTB2S-N1301S15	1119148
	PNP	None	Cable, 3-wire, 2 m ¹⁾	GTB2S-P1301S10	1091653

¹⁾ Do not bend below 0 °C.

- **Functional principle:** Photoelectric proximity sensor
- **Functional principle detail:** Background suppression
- **Light source:** PinPoint LED
- **Voltage type:** DC
- **Switching mode:** Light/dark switching
- **Type of light:** visible red light

Sensing range max.	Switching output	Adjustment	Connection type	Type	Part no.
1 mm ... 36 mm	NPN	None	Cable with M8 male connector, 4-pin, 200 mm ¹⁾	GTB2S-N6331	1115445
2 mm ... 120 mm	NPN	Potentiometer	Cable, 4-wire, 2 m ¹⁾	GTB2S-N2451	1087766

¹⁾ Do not bend below 0 °C.

- **Functional principle:** Photoelectric retro-reflective sensor
- **Functional principle detail:** With minimum distance to reflector (dual lens system)
- **Light source:** PinPoint LED
- **Voltage type:** DC
- **Switching mode:** Dark switching
- **Type of light:** visible red light

Sensing range max.	Switching output	Adjustment	Connection type	Type	Part no.
0.02 m ... 3 m	NPN	None	Cable with connector M8, 3-pin, 200 mm ¹⁾	GL2S-E5311	1064361
			Cable with connector, JST, 3-pin, 250 mm ²⁾	GL2S-E0311S19	1125388
			Cable, 3-wire, 2 m ¹⁾	GL2S-E1311	1063009
	GL2S-E1312	1064424			
	PNP	None	Cable with connector M8, 3-pin, 200 mm ¹⁾	GL2S-F5311	1063008
			Cable, 3-wire, 2 m ¹⁾	GL2S-F1311	1064358
			Cable, 3-wire, 5 m ¹⁾	GL2S-F0311S07	1103742

¹⁾ Do not bend below 0 °C.

²⁾ Do not bend below 0 °C, operating temperature of the male connector is -25 °C ... +50 °C.

- **Functional principle:** Photoelectric retro-reflective sensor
- **Functional principle detail:** With minimum distance to reflector (dual lens system)
- **Light source:** PinPoint LED
- **Voltage type:** DC
- **Switching mode:** Light/dark switching
- **Type of light:** visible red light

Sensing range max.	Switching output	Adjustment	Connection type	Type	Part no.
-	NPN	None	Cable with special connector JST, 4-wire, 250 mm ¹⁾	GL2S-N0311S26	1140105
0.02 m ... 3 m	NPN	None	Cable, 4-wire, 2 m ¹⁾	GL2S-N2311	1067404
			Cable with special connector 3M, 4-wire, 0.35 m ¹⁾	GL2S-N0311S01	1075790
			Cable with special connector 3M, 4-wire, 0.45 m ¹⁾	GL2S-N0311S02	1075791
			Cable with special connector 3M, 4-wire, 0.63 m ¹⁾	GL2S-N0311S03	1075792
			Cable with special connector 3M, 4-wire, 0.96 m ¹⁾	GL2S-N0311S04	1075793
			Cable with special connector Typ 3M (37104-4101-G00 FL), 4-wire, 0.25 m ²⁾	GL2S-N0311S17	1115096

¹⁾ Do not bend below 0 °C.

²⁾ Do not bend below 0 °C, operating temperature of the male connector is -25 °C ... +50 °C.

- **Functional principle:** Photoelectric retro-reflective sensor
- **Functional principle detail:** With minimum distance to reflector (dual lens system)
- **Light source:** PinPoint LED
- **Voltage type:** DC
- **Switching mode:** Light switching
- **Type of light:** visible red light

Sensing range max.	Switching output	Adjustment	Connection type	Type	Part no.
0.02 m ... 3 m	NPN	None	Cable with connector, JST, 3-pin, 250 mm ¹⁾	GL2S-N0311S18	1139225
			Cable, 3-wire, 2 m ²⁾	GL2S-N1311	1064360
				GL2S-N1312	1064423
	PNP	None	Cable with MOLEX-connector 43020-0409, 200 mm ²⁾	GL2S-P0311S08	1109135
			Cable with connector M8, 3-pin, 200 mm ²⁾	GL2S-P5311	1064359
				GL2S-P5311S10	1113290
			Cable with connector M8, 3-pin, 300 mm ²⁾	GL2S-P0311S09	1112777
			Cable, 3-wire, 2 m ²⁾	GL2S-P1311	1064357
			Cable with M8 male connector, 3-pin, snap lock, 200 mm ²⁾	GL2S-P0311S20	1130498
			Cable with Tyco male connector, 3-pin, 1.26 m ²⁾	GL2S-P0311S24	1138542
Cable with Tyco male connector, 3-pin, 1.85 m ²⁾	GL2S-P0311S25	1138543			

¹⁾ Do not bend below 0 °C, operating temperature of the male connector is -25 °C ... +50 °C.

²⁾ Do not bend below 0 °C.

- **Functional principle:** Through-beam photoelectric sensor
- **Light source:** LED
- **Voltage type:** DC
- **Switching mode:** Dark switching
- **Type of light:** Infrared light

Sensing range max.	Switching output	Adjustment	Connection type	Type	Part no.
0 m ... 3 m	NPN	None	Cable, 3-wire, 2 m ¹⁾	GSE2S-E1321S03	1092425

¹⁾ Do not bend below 0 °C.

- **Functional principle:** Through-beam photoelectric sensor
- **Light source:** LED
- **Voltage type:** DC
- **Switching mode:** Light switching
- **Type of light:** Infrared light

Sensing range max.	Switching output	Adjustment	Connection type	Type	Part no.
0 m ... 3 m	PNP	None	Cable, 3-wire, 2 m ¹⁾	GSE2S-P1321S01	1089630

¹⁾ Do not bend below 0 °C.

- **Functional principle:** Through-beam photoelectric sensor
- **Light source:** PinPoint LED
- **Voltage type:** DC
- **Switching mode:** Light/dark switching
- **Type of light:** visible red light

Sensing range max.	Switching output	Adjustment	Connection type	Type	Part no.
0 m ... 2 m	NPN	None	Cable, 4-wire, 2 m ¹⁾	GSE2S-N2311	1089006
	PNP	None	Cable, 4-wire, 2 m ¹⁾	GSE2S-P2311	1121697

¹⁾ Do not bend below 0 °C.

SICK AT A GLANCE

SICK is one of the leading manufacturers of intelligent sensors and sensor solutions for industrial applications. A unique range of products and services creates the perfect basis for controlling processes securely and efficiently, protecting individuals from accidents and preventing damage to the environment.

We have extensive experience in a wide range of industries and understand their processes and requirements. With intelligent sensors, we can deliver exactly what our customers need. In application centers in Europe, Asia and North America, system solutions are tested and optimized in accordance with customer specifications. All this makes us a reliable supplier and development partner.

Comprehensive services complete our offering: SICK LifeTime Services provide support throughout the machine life cycle and ensure safety and productivity.

For us, that is “Sensor Intelligence.”

WORLDWIDE PRESENCE:

Contacts and other locations –www.sick.com