



Lector63x

1D, 2D and DPM code identification using a camera for mid-range reading distances

SICK
Sensor Intelligence.

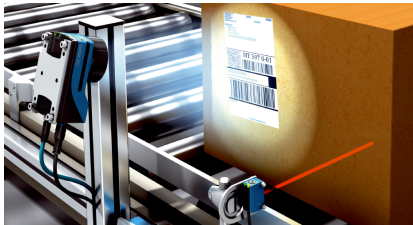
Advantages



The Lector63x offers an optimum combination of performance and flexibility in a compact housing. It is ideal for applications which required high resolution, good scanning performance and high read ranges. The Lector63x detects small codes and codes on small objects with ease.



Identification of molds using the Asset Monitoring System



Automated box identification with image-based code readers

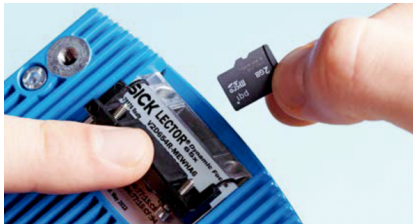


Traceability of products in the production process

A powerful shared platform facilitates work



Acoustic and optical feedback. Immediate read feedback in all environments thanks to the green LED and acoustic signal.



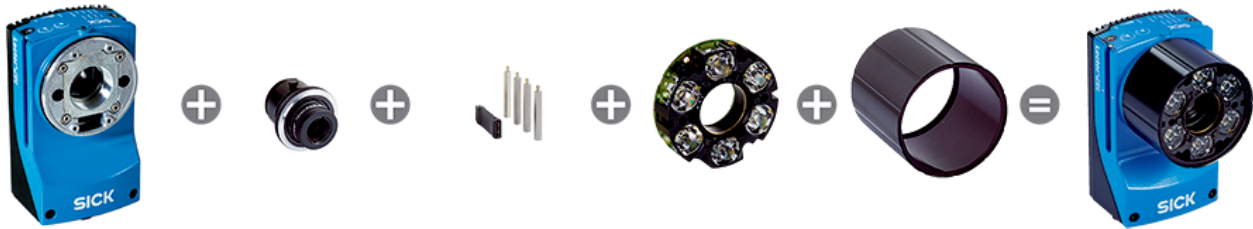
Slot for microSD memory card. Parameter cloning and storage of images.



SOPAS interface, a comprehensive configuration and monitoring tool which makes possible a clear view of the read process.



Easy set-up, easy operation, easy exchange. All image-based code readers from the Lector® series are equipped with countless functions which maximum performance and reliability and make easy operation possible at the same time.



The Lector63x is the optimal all-round code reader with flexible optics and filter design. This modular optical concept allows for application-specific configuration.

4Dpro – THE FLEXIBILITY YOU NEED

The sensor manufacturer SICK offers a broad portfolio of identification and vision solutions which are developed and produced in-house. Whichever solution you choose today, you can be sure of a flexible future with the 4Dpro concept. All 4Dpro sensors are compatible and interchangeable with one another. Standardized connectivity, a standardized user interface, and a standardized accessory concept – we call this unique combination 4Dpro.



standardized connectivity

All 4Dpro sensors feature the same modular connectivity. This provides the basis for a flexible fieldbus link combined with high process reliability. What's more, you benefit twice over: the purchase order process is less complicated and integration is quicker and easier.



standardized user interface

All 4Dpro sensors use SICK's universal device configuration software. This means that you can quickly familiarize yourself with all technologies. Data is sent to the control in the required format and the inputs and outputs of the 4Dpro sensors can be analyzed quickly by an event monitor.



Investment security, easy commissioning, low level of training required, fast and flexible exchange, even when switching between different identification technologies.

SICK LifeTime Services

SICK's services increase machine and plant productivity, enhance the safety of people all over the world, provide a solid foundation for a sustainable business operation, and protect investment goods. In addition to its usual consulting services, SICK provides direct on-site support during the conceptual design and commissioning phases as well as during operation.

The range of services not only covers aspects like maintenance and inspection, but also includes performance checks as well as upgrades and retrofits. Modular or customized service contracts extend the service life of plants and therefore increase their availability. If faults occur or limit values are exceeded, these are detected at all times by the corresponding sensors and systems.



Consulting and design

Application-specific advice on the product, its integration and the application itself.



commissioning and maintenance

Application-optimized and sustainable — thanks to professional commissioning and maintenance by a trained SICK service technician.



service contracts

Extended warranty, SICK Remote Service, 24-hour helpdesk, maintenance, availability guarantees and other modular components can be individually combined on request.



Technical data overview

Focus	Adjustable focus (manually)
Sensor type	CMOS matrix sensor, grayscale values
Sensor resolution	1,280 px x 1,024 px 1,600 px x 1,200 px
Scanning frequency	≤ 50 Hz
Reading distance	50 mm ... 2,200 mm
Enclosure rating	IP67
Exchangeable lens and illumination	✓
Ethernet	✓, TCP/IP
PROFINET	✓
EtherNet/IP™	✓
Serial	✓, RS-232, RS-422
CAN	✓
PROFIBUS DP	✓, optional over external fieldbus module
Weight	+ 430 g ... + 590 g (depending on type)

Product description

The Lector63x is a flexible image-based code reader. With its high image resolution, compact housing and exchangeable optical design it is well equipped for a variety of needs. It can easily be used for small codes, in high production speeds or for long-range identification. The Lector63x is easy to handle: quick optical exchange, intuitive user interface, aiming laser, beeper, LED feedback and MicroSD card – simplifying setup, operation and maintenance!



Focus Open 2016
Special Mention

At a glance

- Code reader with up to 2-megapixel sensor
- Flexible optics and filter design
- Integrated, replaceable high-power illumination
- Intuitive user interface, with flexible result string with code analysis options
- Function buttons, aiming laser, acoustic feedback signal, and green feedback LED
- microSD memory card

Your benefits

- High-resolution sensor and intelligent processing ensure outstanding reading performance, even under difficult reading conditions
- Flexible optical design and high-power illumination enable small codes to be read at high speeds or in applications with a large reading distance
- Fast, straightforward commissioning thanks to the intuitive user interface; function button for rapid device setup; integrated illumination and aiming laser
- Direct results monitoring thanks to acoustic signal and colored feedback spot on the object
- Few machine downtimes in the event of faults on the production line, thanks to straightforward cloning function using microSD memory card

Fields of application

- Presentation camera for manual parcel sorting
- Automated sorting systems in CEP and retail
- End-of-line aggregation for food or pharma packaging
- Track and trace in automated packaging machines
- Long-range identification for traceability in automotive
- Tire identification
- High-resolution code reading in electronics and solar

Ordering information

Other models and accessories → www.sick.com/Lector63x

- **Variant:** main unit
- **Readable code structures:** 1D codes, Stacked, 2D codes, direct-marked codes, plain text
- **Sensor resolution:** 1,280 px x 1,024 px
- **Optical focus:** adjustable focus (manually)
- **Illumination:** To be ordered separately as accessories
- **Note:** Additional accessories may be necessary for some communication interfaces (details available online)

Lens	Type	Part no.
C-mount (compact), 1/1.8", To be ordered separately as accessories	V2D631D-MXCXB0	1082394
S-mount, 1/1.8", To be ordered separately as accessories	V2D631D-MXSXB0	1082395

- **Variant:** main unit
- **Readable code structures:** 1D codes, Stacked, 2D codes
- **Sensor resolution:** 1,280 px x 1,024 px
- **Optical focus:** adjustable focus (manually)
- **Illumination:** To be ordered separately as accessories
- **Note:** Additional accessories may be necessary for some communication interfaces (details available online)

Lens	Type	Part no.
C-mount (compact), 1/1.8", To be ordered separately as accessories	V2D631R-MXCXB0	1078473
S-mount, 1/1.8", To be ordered separately as accessories	V2D631R-MXSXB0	1078472

- **Variant:** Complete device
- **Readable code structures:** 1D codes, Stacked, 2D codes, direct-marked codes, plain text
- **Sensor resolution:** 1,280 px x 1,024 px
- **Optical focus:** adjustable focus (manually)
- **Illumination:** integrated
- **Note:** Additional accessories may be necessary for some communication interfaces (details available online)

Illumination color	Lens	Type	Part no.
Red	C-mount (compact), 1/1.8", 25 mm, 8, 8	V2D631D-MRMFB3	1117392
Blue	C-mount (compact), 1/1.8", 35 mm, 8, 8	V2D631D-MBMGB2	1120539

- **Variant:** Complete device
- **Readable code structures:** 1D codes, Stacked, 2D codes
- **Sensor resolution:** 1,280 px x 1,024 px
- **Optical focus:** adjustable focus (manually)
- **Illumination:** integrated
- **Illumination color:** White
- **Note:** Additional accessories may be necessary for some communication interfaces (details available online)

Lens	Type	Part no.
C-mount (compact), 1/1.8", 12 mm, 8, 8	V2D631R-MKMDB4	1080075
C-mount (compact), 1/1.8", 16 mm, 8, 8	V2D631R-MKMEB1	1080076
C-mount (compact), 1/1.8", 25 mm, 8, 8	V2D631R-MWMFB4	1080077
C-mount (compact), 1/1.8", 35 mm, 8, 8	V2D631R-MWMGB1	1080078
S-mount, 1/1.8", 17.5 mm, 8, 8	V2D631R-MKSEB8	1080072
S-mount, 1/1.8", 25 mm, 8, 8	V2D631R-MWSFB4	1080073
S-mount, 1/1.8", 9.6 mm, 8, 8	V2D631R-MISCB8	1080070

- **Variant:** main unit
- **Readable code structures:** 1D codes, Stacked, 2D codes, direct-marked codes, plain text
- **Sensor resolution:** 1,600 px x 1,200 px
- **Optical focus:** adjustable focus (manually)
- **Illumination:** To be ordered separately as accessories
- **Note:** Additional accessories may be necessary for some communication interfaces (details available online)

Lens	Type	Part no.
C-mount (compact), 1/1.8", To be ordered separately as accessories	V2D632D-MXCXB0	1082396
S-mount, 1/1.8", To be ordered separately as accessories	V2D632D-MXSXB0	1082397

- **Variant:** main unit
- **Readable code structures:** 1D codes, Stacked, 2D codes
- **Sensor resolution:** 1,600 px x 1,200 px
- **Optical focus:** adjustable focus (manually)
- **Illumination:** To be ordered separately as accessories
- **Note:** Additional accessories may be necessary for some communication interfaces (details available online)

Lens	Type	Part no.
C-mount (compact), 1/1.8", To be ordered separately as accessories	V2D632R-MXCXB0	1075881
S-mount, 1/1.8", To be ordered separately as accessories	V2D632R-MXSXB0	1067380

- **Variant:** Complete device
- **Readable code structures:** 1D codes, Stacked, 2D codes, direct-marked codes, plain text
- **Sensor resolution:** 1,600 px x 1,200 px
- **Optical focus:** adjustable focus (manually)
- **Illumination:** integrated
- **Illumination color:** White
- **Note:** Additional accessories may be necessary for some communication interfaces (details available online)

Lens	Type	Part no.
C-mount (compact), 1/1.8", 16 mm, 8, 8	V2D632D-MKMEB1	1125834
C-mount (compact), 1/1.8", 25 mm, 8, 8	V2D632D-MWMFB4	1125814
S-mount, 1/1.8", 25 mm, 8, 8	V2D632D-MWSFB4	1117707

- **Variant:** Complete device
- **Readable code structures:** 1D codes, Stacked, 2D codes
- **Sensor resolution:** 1,600 px x 1,200 px
- **Optical focus:** adjustable focus (manually)
- **Illumination:** integrated
- **Note:** Additional accessories may be necessary for some communication interfaces (details available online)

Illumination color	Lens	Type	Part no.
White	C-mount (compact), 1/1.8", 12 mm, 8, 8	V2D632R-MKMDB4	1074079
	C-mount (compact), 1/1.8", 16 mm, 8, 8	V2D632R-MKMEB1	1074080
	C-mount (compact), 1/1.8", 25 mm, 8, 8	V2D632R-MWMFB4	1074081
	C-mount (compact), 1/1.8", 35 mm, 8, 8	V2D632R-MWMGB1	1074082
	S-mount, 1/1.8", 17.5 mm, 8, 8	V2D632R-MKSEB8	1074300
	S-mount, 1/1.8", 25 mm, 8, 8	V2D632R-MWSFB4	1074301
	S-mount, 1/1.8", 9.6 mm, 8, 8	V2D632R-MISCB8	1074299
Blue	C-mount (compact), 1/1.8", 25 mm, 8, 8	V2D632R-MBMFB4	1117703

SICK AT A GLANCE

SICK is one of the leading manufacturers of intelligent sensors and sensor solutions for industrial applications. A unique range of products and services creates the perfect basis for controlling processes securely and efficiently, protecting individuals from accidents and preventing damage to the environment.

We have extensive experience in a wide range of industries and understand their processes and requirements. With intelligent sensors, we can deliver exactly what our customers need. In application centers in Europe, Asia and North America, system solutions are tested and optimized in accordance with customer specifications. All this makes us a reliable supplier and development partner.

Comprehensive services complete our offering: SICK LifeTime Services provide support throughout the machine life cycle and ensure safety and productivity.

For us, that is “Sensor Intelligence.”

WORLDWIDE PRESENCE:

Contacts and other locations –www.sick.com