



PLG6-060F434

PLG

SWITCHING AUTOMATION LIGHT GRIDS

SICK
Sensor Intelligence.



Illustration may differ



Ordering information

Type	Part no.
PLG6-060F434	1051978

Other models and accessories → www.sick.com/PLG

Detailed technical data

Features

Sensor principle	Photoelectric retro-reflective sensor
Minimum detectable object (MDO)	Parallel beam, 70 mm
Beam separation	60 mm
Number of beams	2
Detection height	60 mm

Mechanics/electronics

Wave length	660 nm
Supply voltage V_s	DC 15 V ... 30 V ¹⁾
Power consumption sender	50 mA
Power consumption receiver	< 50 mA
Ripple	< 5 V _{pp}
Output current I_{max}	≤ 50 mA
Initialization time	< 1 s
Switching output	PNP ²⁾
Output mode	Q dark switching ³⁾
Current consumption job LED	30 mA ¹⁾
Dimensions (W x H x D)	32 mm x 130.2 mm x 36.6 mm
Connection type	Cable with M12 male connector, 4-pin, 280 mm
Housing material	Aluminum
Indication	LED
Enclosure rating	IP40
Circuit protection	U _V connections, reverse polarity protected

¹⁾ Typical value.

²⁾ Q.

³⁾ Q = active, if at least one beam is interrupted, /Q = active, if all of the beams are free.

	Output Q short-circuit protected Interference pulse suppression
Protection class	III
Weight	< 500 g
Front screen	PMMA

¹⁾ Typical value.

²⁾ Q.

³⁾ Q = active, if at least one beam is interrupted, /Q = active, if all of the beams are free.

Performance

Maximum range	0.5 m
Minimum range	≥ 60 mm
Operating range	0.35 m
Response time	Parallel beam, 5 ms ¹⁾

¹⁾ With resistive load.

Ambient data

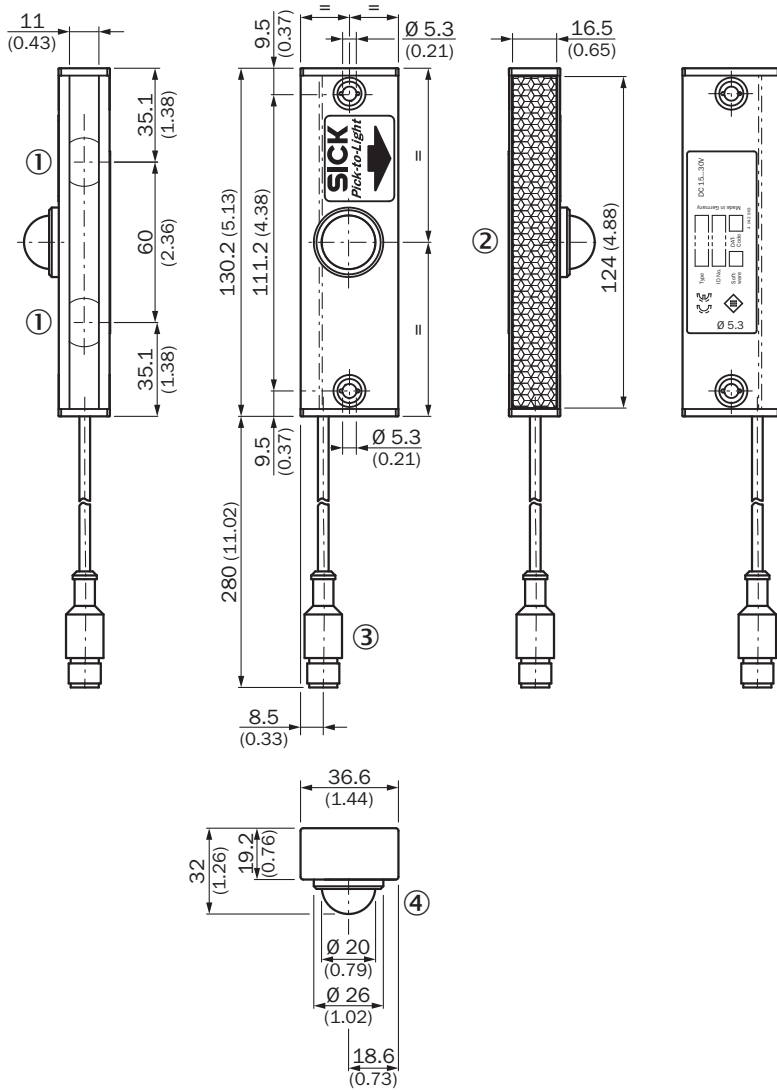
Shock resistance	10 g/ DIN EN 60068-2-29 / 16 ms
Vibration resistance	5 g, 10 Hz ... 55 Hz (IEC 68-2-6)
EMC	EN 60947-5-2
Ambient operating temperature	-10 °C ... +55 °C
Ambient temperature, storage	-25 °C ... +70 °C

Classifications

ECLASS 5.0	27270910
ECLASS 5.1.4	27270910
ECLASS 6.0	27270910
ECLASS 6.2	27270910
ECLASS 7.0	27270910
ECLASS 8.0	27270910
ECLASS 8.1	27270910
ECLASS 9.0	27270910
ECLASS 10.0	27270910
ECLASS 11.0	27270910
ECLASS 12.0	27270910
ETIM 5.0	EC002549
ETIM 6.0	EC002549
ETIM 7.0	EC002549
ETIM 8.0	EC002549
UNSPSC 16.0901	39121528

Dimensional drawing (Dimensions in mm (inch))

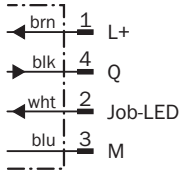
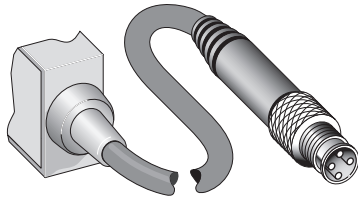
PLG6



- ① Photoelectric retro-reflective sensor
- ② Reflective tape
- ③ Male connector M12, 4-pin
- ④ Job-LED, red

Connection type and diagram

Connection type and diagram

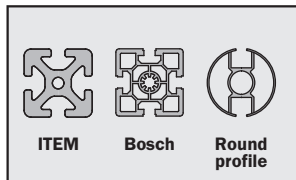


Concept of operation

Specific features

Easy installation

1. Easy mounting on to different profiles



The light grid can be mounted on different profiles, e.g. ITEM, Bosch, round profile.

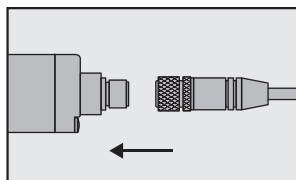
2. Easy installation with slot nuts



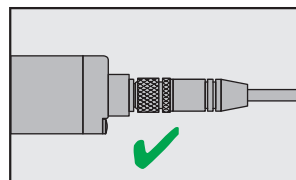
The PLG can easily be mounted on the profile with slot nuts.

Plug & play

1. Plug in and tighten the ring of the connector







2. Device is ready for use



Recommended accessories

Other models and accessories → www.sick.com/PLG

	Brief description	Type	Part no.
Other mounting accessories			
	Sliding nuts with spring metal ball for ITEM profile, 2x slot 6 and slot 8, including mounting material, Mounting hardware included with every 2 x slot 6 and slot 8	BEF-NSIT-PLG	2041045
Reflectors			
	Reflective tape on aluminium profile, 2 hole mounting, Screw-on, 2 hole mounting	REF-PLG120	1029196
	Self-adhesive, customizable length by roll, 2.5 cm x 22.8 m ¹⁾ , self-adhesive	REF-PLUS-R25-K	4051184
Others			
	<ul style="list-style-type: none"> • Connection type head A: Female connector, M12, 4-pin, straight, A-coded • Connection type head B: Flying leads • Signal type: Sensor/actuator cable • Cable: 5 m, 4-wire, PVC • Description: Sensor/actuator cable, unshielded • Application: Zones with chemicals 	YF2A14-050VB3XLEAX	2096235

¹⁾ Customizable length by roll. Width 2.5 cm, length max. 22.8 m.

SICK AT A GLANCE

SICK is one of the leading manufacturers of intelligent sensors and sensor solutions for industrial applications. A unique range of products and services creates the perfect basis for controlling processes securely and efficiently, protecting individuals from accidents and preventing damage to the environment.

We have extensive experience in a wide range of industries and understand their processes and requirements. With intelligent sensors, we can deliver exactly what our customers need. In application centers in Europe, Asia and North America, system solutions are tested and optimized in accordance with customer specifications. All this makes us a reliable supplier and development partner.

Comprehensive services complete our offering: SICK LifeTime Services provide support throughout the machine life cycle and ensure safety and productivity.

For us, that is “Sensor Intelligence.”

WORLDWIDE PRESENCE:

Contacts and other locations –www.sick.com