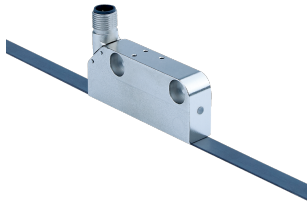


## STL/ETL70

Encoder with HIPERFACE® or HIPERFACE DSL® for use in linear drives

**SICK**  
Sensor Intelligence.



### Technical data overview

<b>Measuring length</b>	0 m ... 16.384 m
<b>Communication interface</b>	HIPERFACE <sup>®</sup> , HIPERFACE DSL <sup>®</sup> (depending on type)
<b>Resolution</b>	0.448 µm For interpolation of the sine/cosine signals with e.g. 12 bit 1 µm
<b>Connection type</b>	Male connector, M12, 8-pin, universal Male connector, M12, 4-pin, universal
<b>Safety system</b>	- / ✓ (depending on type)

### Product description

Precision, speed, dynamics, and high stiffness – it is exactly these properties that play a significant role in modern applications in drive technology. The STL/ETL70 motor feedback system fulfills all these properties with the help of the HIPERFACE<sup>®</sup> or HIPERFACE DSL<sup>®</sup> interface. The magnetic principle of operation, the long measuring length of up to 16 m, and the high resolution open up a broad range of application possibilities for absolute position detection. Integrated into the motor feedback system are the latest sensor and analysis technology. Thanks to HIPERFACE DSL<sup>®</sup>, the ETL70 is the world's first linear motor feedback system with one cable technology.

### At a glance

- Absolute measurement system for linear direct drives
- Measuring lengths: up to 16,384 mm
- High traversing speeds: up to 10 m/s
- Status LED
- Non-contact measurement system; reading distance to the magnetic tape: up to 0.8 mm
- Electronic type label
- ETL70 with one cable technology thanks to the HIPERFACE DSL<sup>®</sup> interface
- STL70 with HIPERFACE<sup>®</sup> interface

### Your benefits

- The STL/ETL70 requires no reference run, meaning it is immediately ready for operation again after being switched off
- Easy to mount thanks to a status LED that indicates the optimal mounting position of the motor feedback system
- Can be installed in almost any position by rotating the M12 male connector
- Maintenance-free due to non-contact measurement principle, therefore no machine downtimes due to wear and tear
- Simple integration of the system thanks to the HIPERFACE<sup>®</sup> or HIPERFACE DSL<sup>®</sup> interface
- High availability compared to optical systems – even with dust, contamination and moisture
- STL70-2 certified according to SIL2 and PL d (HIPERFACE<sup>®</sup> interface)

### Fields of application

- Linear direct drives
- Linear axis systems
- Pick-and-place applications
- Robotics (handling applications)

## Ordering information

Other models and accessories → [www.sick.com/STL\\_ETL70](http://www.sick.com/STL_ETL70)

Communication interface	Safety system	Connection type	Type	Part no.
HIPERFACE DSL®	-	Male connector, M12, 4-pin, universal <sup>1)</sup>	ETL70-0KA4	1116913
HIPERFACE®	✓	Male connector, M12, 8-pin, universal <sup>1)</sup>	STL70-2HA8	1135012
	-	Male connector, M12, 8-pin, universal <sup>1)</sup>	STL70-0HA8	1116912

<sup>1)</sup> The universal connection is rotatable so that it is possible to position the connector in the radial or axial direction.

## SICK AT A GLANCE

SICK is one of the leading manufacturers of intelligent sensors and sensor solutions for industrial applications. A unique range of products and services creates the perfect basis for controlling processes securely and efficiently, protecting individuals from accidents and preventing damage to the environment.

We have extensive experience in a wide range of industries and understand their processes and requirements. With intelligent sensors, we can deliver exactly what our customers need. In application centers in Europe, Asia and North America, system solutions are tested and optimized in accordance with customer specifications. All this makes us a reliable supplier and development partner.

Comprehensive services complete our offering: SICK LifeTime Services provide support throughout the machine life cycle and ensure safety and productivity.

For us, that is “Sensor Intelligence.”

## WORLDWIDE PRESENCE:

Contacts and other locations –[www.sick.com](http://www.sick.com)