



WGS

OBJECT DETECTION SYSTEMS

SICK
Sensor Intelligence.



Ordering information

| Application | Items supplied | Type | Part no. |
|---|--|------|----------|
| Driver assistance for forage harvesters and tractors with baler | TiM351 laser scanner with integrated windrow guidance software | WGS | 1076929 |

Other models and accessories → www.sick.com/WGS



Detailed technical data

Features

| | |
|-----------------------------|--|
| Areas of application | Agriculture |
| Number of sensors | 1 |
| Vehicles | Forage harvesters, tractors with baler |

Mechanics/electronics

| | |
|----------------------------------|----------------------------------|
| Weight | 250 g, without connecting cables |
| Supply voltage | (9 V DC ... 28 V DC) |
| Power consumption | 3 W (≤ 4.5 W) |
| Machine operating voltage | 9 V DC ... 28 V DC |
| Laser class | 1, eye-safe (EN 60825-1:2014) |

Performance

| | |
|--------------------------------|---|
| Functions | Determining and outputting of windrow trajectory (windrow progression) and the absolute windrow position for automated transverse control; determining and outputting of windrow volume for automated speed control |
| Number of laserscanners | 1 |
| Self-diagnostics | ✓ |

Interfaces

| | | |
|-----------------------------|-----------------------|--|
| Ethernet | Protocol | Interface of the TiM35x laser scanner CAN via Ethernet |
| | Electrical connection | 1 x Ethernet, M12 female connector, 4-pin, 1 x voltage supply, M12 male connector, 12-pin |
| Ethernet CAN gateway | Protocol | Interface of the CAN gateway that can be ordered as an option J1939 |
| | Electrical connection | 1 x Ethernet, AMP SuperSeal, 4-pin, 1 x CAN AMP SuperSeal, 3-pin, 1 x voltage supply, AMP SuperSeal, 2-pin |

Ambient data

| | |
|--------------------------------------|-------------------|
| Ambient operating temperature | -25 °C ... +50 °C |
| Ambient temperature, storage | -40 °C ... +75 °C |

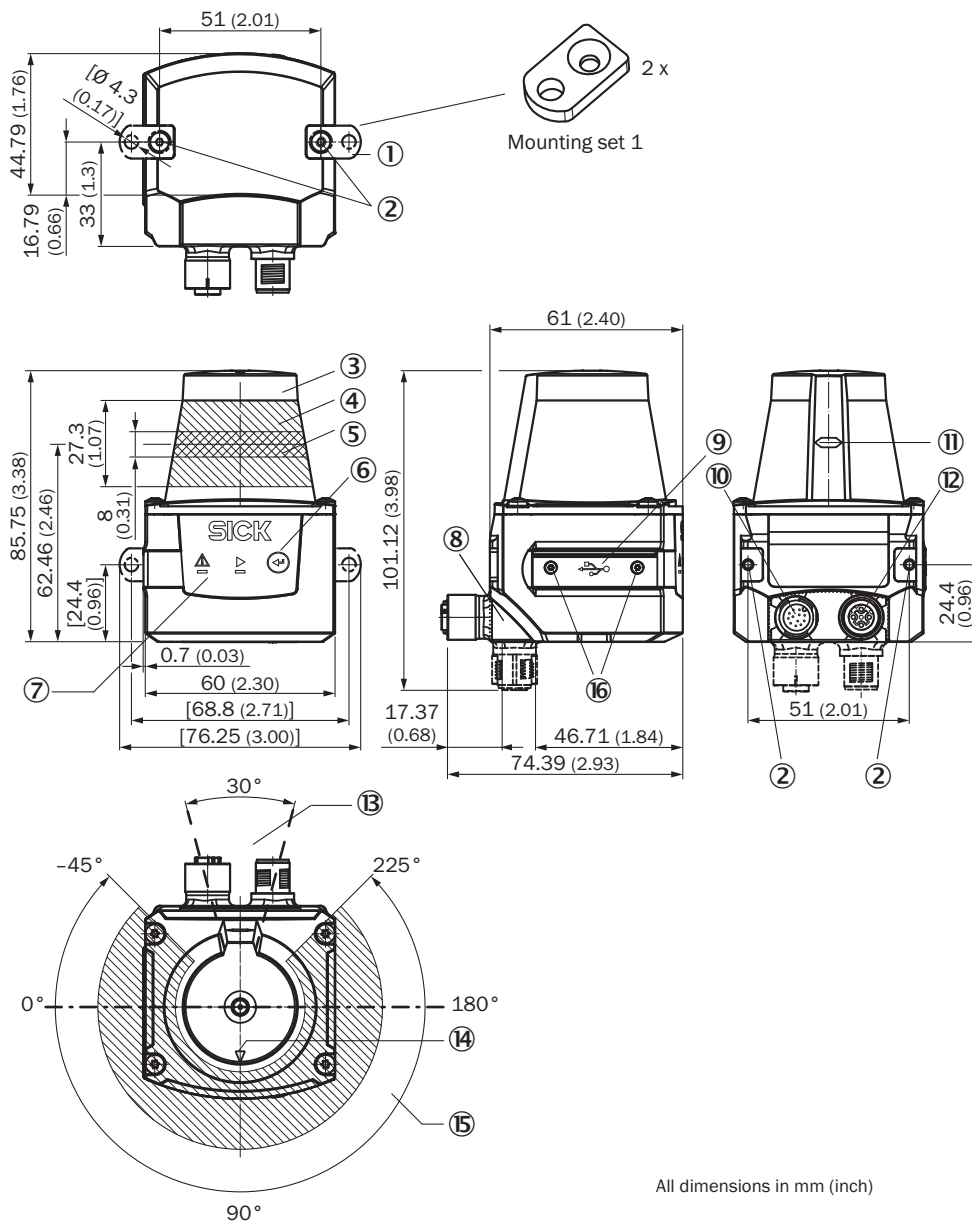
General notes

| | |
|-----------------------|--|
| Items supplied | TiM351 laser scanner with integrated windrow guidance software |
|-----------------------|--|

Classifications

| | |
|-----------------------|----------|
| ECLASS 5.0 | 27339090 |
| ECLASS 5.1.4 | 27339090 |
| ECLASS 6.0 | 27339090 |
| ECLASS 6.2 | 27339090 |
| ECLASS 7.0 | 27339090 |
| ECLASS 8.0 | 27339090 |
| ECLASS 8.1 | 27339090 |
| ECLASS 9.0 | 27330190 |
| ECLASS 10.0 | 27330190 |
| ECLASS 11.0 | 27330190 |
| UNSPSC 16.0901 | 25172105 |

Dimensional drawing (Dimensions in mm (inch))







All dimensions in mm (inch)

- ① 2 x straight plates with M3 x 4 mm screw (included in delivery)
- ② M3 threaded mounting hole, 2.8 mm deep (blind hole thread), max. tightening torque 0.8 Nm
- ③ Optical hood
- ④ Receiving range (light inlet)
- ⑤ Transmission range (light emission)
- ⑥ Function button for teach-in
- ⑦ Red and green LED (status displays)
- ⑧ Swivel connector unit
- ⑨ Micro USB female connector, type B
- ⑩ Connection "Power", 12-pin, M12 male connector
- ⑪ Marking for the position of the light emission level
- ⑫ "Ethernet" connection, 4-pin M12 female connector
- ⑬ Area in which no reflective surfaces are allowed for mounted devices
- ⑭ Bearing marking to support alignment (90° axis)
- ⑮ Aperture angle 270° (scanning angle)
- ⑯ 2 x countersunk screw (Torx TX 6) M2 x 4 mm

Recommended accessories

Other models and accessories → www.sick.com/WGS

| | Brief description | Type | Part no. |
|---|---|----------------------------|----------|
| Connection modules | | | |
|  | Gateway CAN J1939 Ethernet, 1 port, reliable operating temperature -40 °C to +105 °C | CAN J1939 Ethernet gateway | 6060948 |
| Mounting brackets and plates | | | |
|  | Mounting kit with sun shade/weather protection, Anodized aluminum, mounting hardware included | Mounting kit | 2068398 |
|  | <ul style="list-style-type: none"> • Connection type head A: Male connector, M12, 4-pin, angled, D-coded • Connection type head B: Male connector, M12, 4-pin, straight, D-coded • Signal type: PROFINET • Cable: 5 m, 4-wire, CAT5, CAT5e, PVC • Description: PROFINET, shielded, Head A: male connector, M12, 4-pin, angled, D coded Head B: male connector, M12, 4-pin, straight Cable: PVC, shielded, 4 x 0.34 mm², Ø 6.5 mm | SSL-1204-F05MZ90 | 6048251 |
|  | <ul style="list-style-type: none"> • Connection type head A: Female connector, M12, 12-pin, straight, A-coded • Connection type head B: Flying leads • Signal type: Sensor/actuator cable, I/O • Cable: 5 m, 12-wire, PUR, halogen-free • Description: Sensor/actuator cable, I/O, twisted pair, shielded • Connection systems: Flying leads • Application: Zones with oils and lubricants | YF2A2B-050UD3XLEAX | 6042735 |

SICK AT A GLANCE

SICK is one of the leading manufacturers of intelligent sensors and sensor solutions for industrial applications. A unique range of products and services creates the perfect basis for controlling processes securely and efficiently, protecting individuals from accidents and preventing damage to the environment.

We have extensive experience in a wide range of industries and understand their processes and requirements. With intelligent sensors, we can deliver exactly what our customers need. In application centers in Europe, Asia and North America, system solutions are tested and optimized in accordance with customer specifications. All this makes us a reliable supplier and development partner.

Comprehensive services complete our offering: SICK LifeTime Services provide support throughout the machine life cycle and ensure safety and productivity.

For us, that is “Sensor Intelligence.”

WORLDWIDE PRESENCE:

Contacts and other locations –www.sick.com