



picoScan100

2D LiDAR sensor – high-performance and cost-effective in compact housing

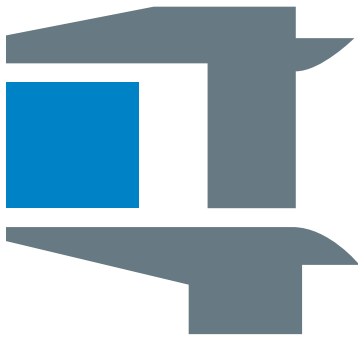
SICK
Sensor Intelligence.

Advantages



Compact. Powerful. Cost-effective.

The picoScan100 2D LiDAR sensors from SICK combine a high performance and future proof hardware with numerous practical software functions in a compact and rugged housing. And best of all: A tailored solution for almost any application can be assembled using the product configurator. That's what we call cost-effectiveness.



compact

Thanks to its compact housing, the picoScan100 is easy to integrate into many applications even when space is at a premium. In the case of autonomous mobile robots, the small footprint of the sensor enables a good balance to be achieved between the space used by the sensors and other key components, for example, the battery.



Powerful

The high performance hardware of the picoScan100 scans a large area of the environment and ensures a continuously high measurement data quality. Its high computing power also allows the measurement data to be filtered and pre-processed on the sensor.



Cost-effective

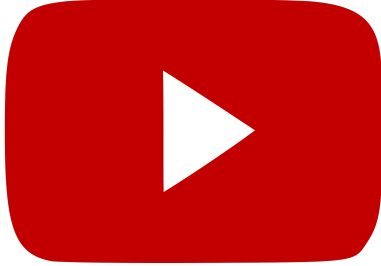
A tailored solution for almost any application can be assembled using the product configurator. It also offers numerous smart software functions that allow an efficient design-in and a long service life. The result: High cost-effectiveness in a total cost of ownership (TCO) analysis.



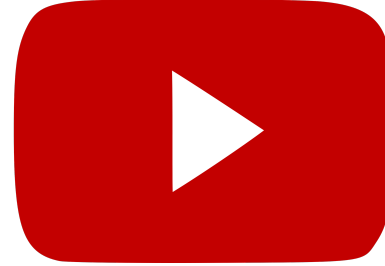
High performance with a small footprint at an affordable price

The picoScan100 – fit for a wide range of applications

The picoScan100 is suitable for many different applications and requirements. This is why the picoScan100 also comes with numerous intelligent features and was thoroughly tested during its development.



The picoScan100 and its features in use



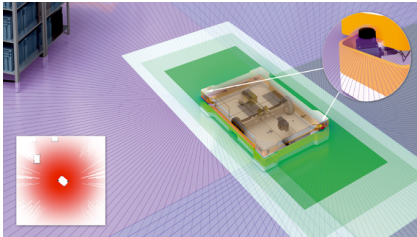
Exceptional quality – tested in the laboratory and in extreme ambient conditions



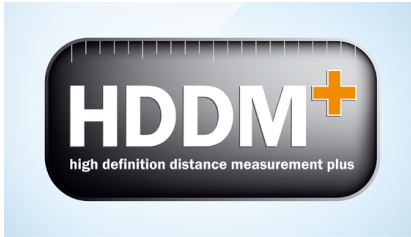
Reliable solutions for a wide range of applications.

Everything that a good 2D LiDAR sensor requires

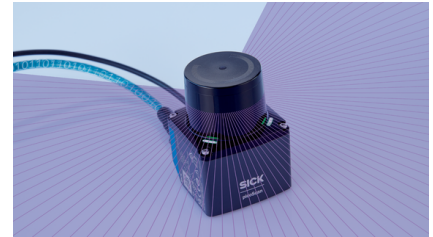
The picoScan100 covers a large working range. The working range is defined by a wide field of view and high scanning ranges. It is also important to be able to reliably detect small and dark objects.



Wide field of view of 276° (270° + 6°)
The wide field of view of the picoScan100 allows a large working range. With two diagonally aligned sensors, it is even possible to cover 360° – and do so with little mounting and alignment effort.



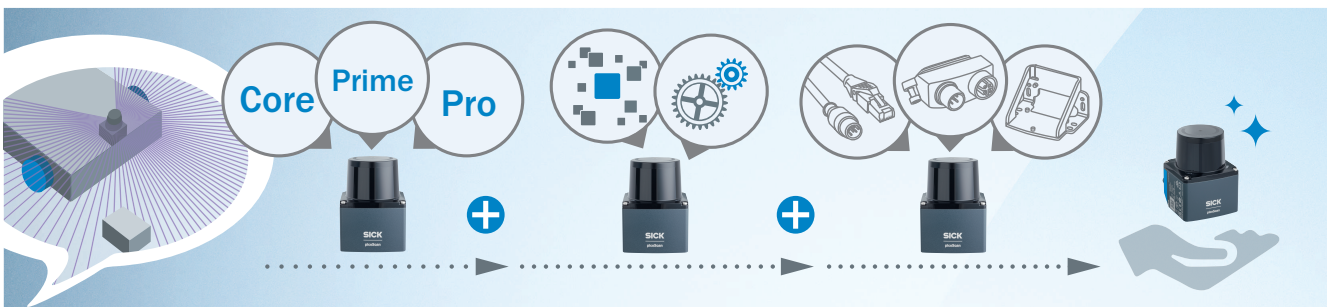
Gap-free environment perception with HDDM+
The HDDM+ multi-pulse measurement method ensures gap-free scanning and immunity to interference. The large number of laser pulses per measurement point results in an overlap of the laser points. This enables the picoScan100 to seamlessly acquire the entire scan area and detect even small objects and structures. Through a statistical evaluation of multiple pulses, any interference by other sensors or laser sources can be suppressed. This is particularly advantageous when using many mobile platforms equipped with sensors in the same environment, e.g. in an automated warehouse.



Improved detection options
The large working range (75 m at 90% remission) and the high angular resolution (up to 0.05°) of the picoScan100 enables small objects or fine structures to be detected even at large distances. This makes the sensor suitable for accurate localization or reliable collision avoidance.



Increased productivity thanks to reliable environment perception



Core, Prime, Pro and lots more – configurable for your requirements

With the picoScan120 and the picoScan150, two variants of the 2D LiDAR sensors are available. While the picoScan120 offers defined SensorApps and software functions, the picoScan150 is also available in the three basic versions Core, Prime or Pro. These differ in regard to their maximum scanning range, angular resolution, and scan rate. After selecting the basic version, further sensor apps and numerous software functions can be added in the product configurator. Features such as multi-echo or the orientation of the system plug can be configured in this way.



| | picoScan120 | picoScan150 Core | picoScan150 Prime | picoScan150 Pro |
|----------------------|------------------|------------------------------|------------------------------|-----------------|
| Working range max.: | 0.05 ... 30 m | 0.05 ... 25 m | 0.05 ... 60 m | 0.05 ... 120 m |
| Working range @ 90%: | 30 m | 25 m | 47 m | 75 m |
| Working range @ 10%: | 18 m | 12 m | 25 m | 40 m |
| Angular resolution: | 0.10° | 0.25° @25 Hz 0.33° @15 Hz | 0.10° @20 Hz 0.25° @40 Hz | 0.05 ... 0.5° |
| Scan frequency: | 20 Hz | 1.00° @15 Hz | 1.00° @15 Hz | 15 ... 50 Hz |
| SensorApps: | Measurement data | Configurable | Configurable | Included |
| Digital add-ons: | Fixed | Configurable | Configurable | Included |

picoScan120

The compact picoScan120 enables reliable and precise navigation of autonomous mobile robots in indoor areas thanks to high-quality measurement data and predefined software functions. The integrated cables also reduce the mounting space required.

picoScan150 Core

With the picoScan150 Core, you receive a high performance sensor with a working range of up to 25 m that covers a wide range of applications. Additional SensorApps and software functions can optionally be ordered.

picoScan150 Prime

With a working range of up to 60 m, this version is ideal for demanding applications such as localizing autonomous mobile robots or mapping large spaces. Thanks to numerous optional SensorApps and software functions, you can precisely tailor the picoScan150 Prime to your requirements.

picoScan150 Pro

This type offers a scanning range of up to 120 m and full access to the available SensorApps and all software functions. With the picoScan150 Pro, you receive the ideal combination of powerful measurement performance and a high level of flexibility.



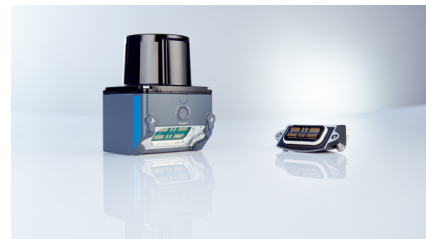
Modular software assembly

The sensor that fits your application: Choose between different software features such as filter functions, multi-echo function or reflector detection.



Advance parameterization included

Save valuable time during commissioning. You can already store predefined settings or parameters sets at the time of ordering. SICK loads them onto the device before delivery.



Flexible connection design

The picoScan100 sensors are available with either a modular system plug (picoScan150) or integrated cables (picoScan120). The flexible connection concept supports different interfaces for a variety of applications.



Select a suitable version of the picoScan150 and configure your individual solution.



Diverse applications. One solution. picoScan100.

The picoScan100 2D LiDAR sensor offers tailor-made solutions for a wide range of applications. Whether used for the navigation of small autonomous mobile robots (AMRs), as a driver assistance system in industrial trucks, or in stationary applications, the picoScan100 can be easily integrated into almost any application – even in outdoor areas – thanks to its compact size.



Autonomous mobile robots (AMRs)

AMRs use the measurement data of the picoScan100 to create a precise map of their environment. The current position and route of the AMR can be determined based on landmarks inside this map.



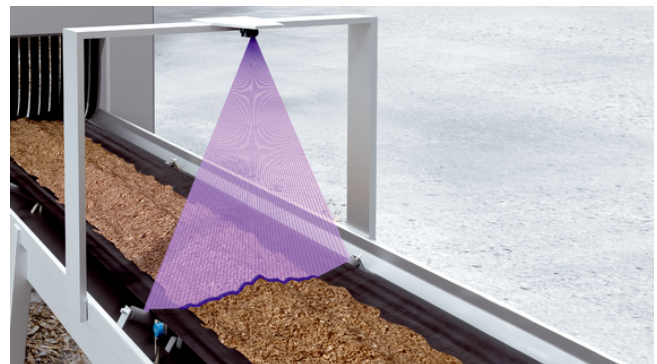
Service robots

Service robots often move about in a dynamic environment. With the help of the integrated field evaluation, the picoScan100 reliably detects objects in its path and can drive around them.



Industrial trucks

The picoScan100 can be used to monitor the area behind industrial trucks. If an object is located on the route, the sensor sends an appropriate warning signal. The driver can then stop the vehicle in time or avoid obstacles.



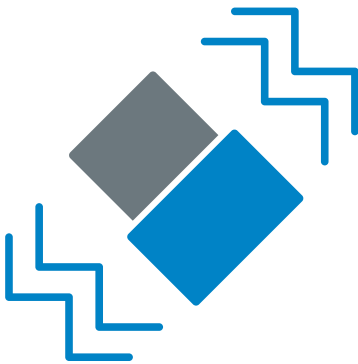
Stationary applications

The picoScan100 is also ideal for a wide variety of stationary applications. Its precise measurement data can, for example, be used to capture profile lines from which a volume flow can be calculated.



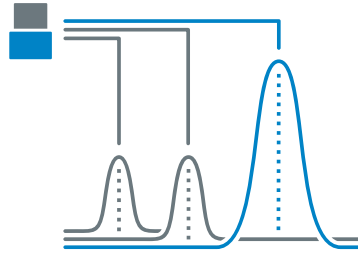
Ideal for outdoor use

Even in rain, fog, dust, strong sunlight or cold: Thanks to its rugged design and intelligent software functions, the picoScan100 reliably perceives its environment even in outdoor areas. It ensures a high data availability even when subjected to external shocks or vibrations.



Rugged design

The sensors are impervious to shocks, vibrations, and ambient light. Thanks to the built-in ventilation element, they will also not be harmed by rapid temperature changes.



Multi-echo technology

The multi-echo technology enables multiple echo signals per emitted measurement beam to be evaluated. Echoes caused by rain or fog, for example, can thereby be identified and, if necessary, blanked out.



Contamination detection

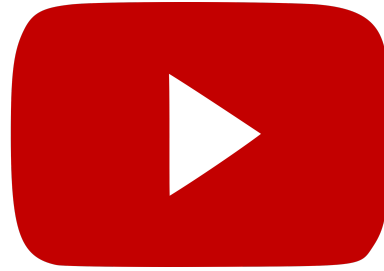
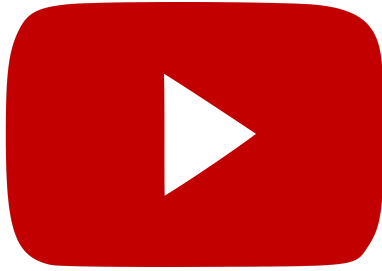
The integrated contamination detection monitors the condition of the optics cover. The sensor can then be cleaned before a failure occurs. This makes it possible to implement condition-based maintenance.



Outstanding availability even under demanding ambient conditions

More than just measurement data

When acquiring measurement data, the measurement core can be flexibly parameterized to suit the application via Dynamic Sensing Profiles. The accurate measurement data feature a precise time stamp and also provide additional information such as RSSI (Received Signal Strength Indicator) values or information about reflectors.



Dynamic Sensing Profiles

Adaptation of the measurement core parameters during operation and without rebooting for dynamic adjustment to the specific requirements in subtasks of the LiDAR sensor.

“One size fits all” sensor using AMRs as an example: From very accurate close range measuring tasks for fine positioning, e.g. docking at a charging station, right through to environment perception in navigation tasks with a large working range and fast response times for collision avoidance.

High measurement data accuracy

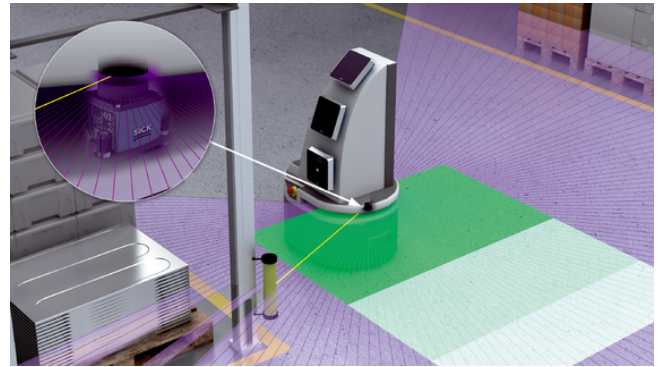
With a low statistical error of typ. ≤ 2 mm (0.05 m ... 5 m) and a low angular error (typ. $\leq 0.005^\circ$), the picoScan150 delivers accurate data. Thanks to the precise scan field flatness of $\pm 1^\circ$, the picoScan150 delivers very accurate data even in the vertical direction. The high measurement data quality thereby obtained means less compensation is required in localization algorithms, and precise positioning can be achieved for mobile platforms.



Fast data output and time synchronization

Functions such as NTP (Network Time Protocol) or PTP (Precision Time Protocol) synchronize the device time with that of other devices and thereby ensure a precise time stamp that is immediately assigned to the measured value during the measurement.

The high scanning frequency of up to 50 Hz and the segmented data output optimizes latencies, which facilitates a high data quality and reduces temporal inaccuracy-related effects in dynamic applications.



Reflector detection

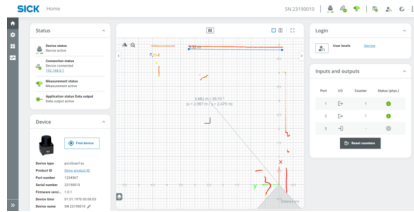
When the picoScan150 detects a reflector, this information is attached to the measured value and is available in the graphical user interface and in the data telegram. This makes it easier to differentiate between natural targets and reflectors.



Precise measurement data for easier further processing

Wide variety of software solutions – quickly and easily integrated

Besides the sensor characteristics, parameterization and efficient further processing of data are essential. SICK provides a wide portfolio of integrated applications, additional software functions and digital accessories for this purpose. The picoScan150-LOC variants, for example, offer integrated localization solutions with no additional hardware.



LiDAR-LOC

LiDAR-LOC achieves accurate and reliable localization results based on natural contours – no adaptation to the surroundings is required. When combined with CODE-LOC, the localization accuracy is increased even further. Furthermore, the Virtual Line Navigation feature enables all types of mobile robots to navigate using virtual lines.

> Find out more

SOPASair web server

SOPASair is an application for mobile devices and browsers and is used for the parameterization, configuration, diagnostics, and scan data monitoring of many SICK sensors. SOPASair helps with finding connected devices and establishing connections.

The web server offers a modern and user-friendly user interface. The browser display eliminates the need to install software and makes the application operating system independent.

Quick and easy integration of the LiDAR sensor

- Choice of drivers: ROS1, ROS2, C++ and Python
- Data formats: Compact and MSGPACK
- Parameterization options: SOPASair web server with user interface, SOPAS telegram, or REST API

In addition, a native ROS2 connection using DDS (Data Distribution Service) on the device side enables a plug and play approach in a ROS2 architecture.

> Protocols & Integration Guide

Code examples are available on GitHub, so not all code needs to be created from scratch.

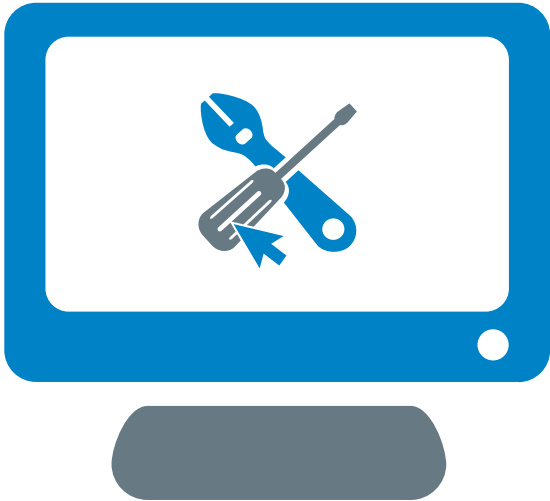
> To the picoScan100 data recordings in Rosbag format



Reliable localization, time-saving integration and intuitive operation

Find out more about operating the picoScan100

Get to know the picoScan100 with the tutorial video series and find out what the picoScan100 can do for you. [Link to the playlist](#)





Technical data overview

| | |
|--------------------------------------|---|
| Application | Indoor / Indoor / Outdoor (depending on type) |
| Measurement principle | HDDM ⁺ |
| Integrated application | Output of measurement data, 2D Object Detection, 2D Object Detection Advanced, LiDAR-LOC 2, Virtual Line Navigation, CODE-LOC (depending on type) |
| Aperture angle | Horizontal 276° |
| Working range | 0.05 m ... 120 m (depending on type) |
| Scanning range | At 90% remission and 10 klx 25 m ... 75 m (depending on type) At 10% remission and 10 klx 12 m ... 40 m (depending on type) |
| Amount of evaluated echoes | 1 / 3 (depending on type) |
| Scanning frequency | 20 Hz, 15 Hz, 25 Hz, Depends on the Dynamic Sensing Profile, 30 Hz, 40 Hz, 50 Hz (depending on type) |
| Ambient operating temperature | -33 °C ... +50 °C (depending on type) |
| Ethernet | ✓ |
| Weight | 220 g / 250 g / 220 g (depending on type) |

Product description

With a large scanning range, fine angular resolution and high sensitivity, the 2D picoScan100 LiDAR sensors are setting new standards as the successor to the TiM. They also reliably detect small and dark objects. The sensors deliver exact measurement data and feature integrated further processing of data that is transmitted through various communication interfaces. The compact picoScan100 sensors equipped with multi-echo technology have a rugged housing and ensure reliable measurement results even under harsh ambient conditions. They solve demanding industrial applications in indoor and outdoor areas. The picoScan120 and picoScan150 variants (Core, Prime, Pro) come with different features to suit individual requirements.

At a glance

- Compact, rugged housing
- Scanning range: 75 m (90% remission); angular resolution: 0.5° to 0.05°
- Dynamic Sensing Profiles
- High measurement accuracy – measurement noise, scan field flatness and angular accuracy
- Scan rate: 15 Hz to 50 Hz
- Multi-echo technology
- Drivers: ROS, C++ and Python
- Integrated applications like contour localization on the picoScan150-LOC

Your benefits

- Space-saving sensor integration
- Precise detection of small and dark objects, even over large distances
- Can be adjusted flexibly to different application requirements
- High measurement availability, even under harsh outdoor ambient conditions
- High availability of the measurement data for efficient, reliable localization and navigation of mobile robots such as AGVs and AMRs
- Flexible connection technology and data integration
- High cost efficiency: Low acquisition and operating costs
- Flexible mounting and fast device exchange

Fields of application

- Simultaneous localization and mapping (SLAM) and collision avoidance for AMRs
- Driver assistance systems for industrial trucks
- Object measurement and detection
- Monitoring of areas and objects in the field of building automation
- Automation applications, even in outdoor areas

Ordering information

Other models and accessories → www.sick.com/picoScan100

- **Working range:** 0.05 m ... 30 m
- **Angular resolution:** 0.1°

| Scanning frequency | Integrated application | Digital add-ons | Connection type | Variant | Type | Part no. |
|--------------------|----------------------------|--|---|-------------------------------|----------------|----------|
| 20 Hz | Output of measurement data | LMDscandata (data format), Reflector detection | 1 "Ethernet" connection, 4-pin M12 female connector (0.25 m), D-coded 1 "POWER" connection, 5-pin M12 male connector (0.35 m), A-coded | Standard (not pre-configured) | PICS120-AX1100 | 1141751 |

- **Working range:** 0.05 m ... 25 m
- **Scanning range:** 25 m at 90% remission, 12 m at 10% remission
- **Angular resolution:** 0.25°, 0.33°, 1°
- **Scanning frequency:** 15 Hz, 25 Hz
- **Connection type:** 2 M12 round connector
- **Variant:** standard (not pre-configured)

| Integrated application | Digital add-ons | System plug | Type | Part no. |
|---|---|-------------------------|--------------------------------------|----------|
| 2D Object Detection | - | See system plug 2130754 | PICS150-01000 Core 6 I/O w/o add-ons | 1142269 |
| Output of measurement data | - | See system plug 2116047 | PICS150-01000 Core w/o add-ons | 1134607 |
| Output of measurement data, 2D Object Detection | Data Reduction & Data Preparation package, Reliability package, Multi-echo technology, LMDscandata (data format), Reflector detection, IMU (Inertial Measurement Unit), PTP | See system plug 2116047 | PICS150-01000 Core-1 | 1134608 |
| | | See system plug 2130754 | PICS150-01000 Core-2 6 I/O | 1142270 |

- **Working range:** 0.05 m ... 60 m
- **Scanning range:** 47 m at 90% remission, 25 m at 10% remission
- **Angular resolution:** 0.05°, 0.1°, 0.125°, 0.25°, 0.33°, 0.5°, 1°
- **Scanning frequency:** 15 Hz, 20 Hz, 25 Hz, 30 Hz, 40 Hz, 50 Hz
- **Integrated application:** output of measurement data, 2D Object Detection
- **Digital add-ons:** Dynamic Sensing Profile package, Data Reduction & Data Preparation package, Reliability package, Multi-echo technology, LMDscandata (data format), Reflector detection, IMU (Inertial Measurement Unit), PTP
- **Connection type:** 2 M12 round connector
- **Variant:** standard (not pre-configured)

| System plug | Type | Part no. |
|-------------------------|-----------------------------|----------|
| See system plug 2116047 | PICS150-01000 Prime-1 | 1134609 |
| See system plug 2130754 | PICS150-01000 Prime-2 6 I/O | 1142272 |

- **Working range:** 0.05 m ... 120 m
- **Scanning range:** 75 m at 90% remission, 40 m at 10% remission
- **Angular resolution:** 0.05°, 0.1°, 0.125°, 0.25°, 0.33°, 0.5°, 1°
- **Scanning frequency:** 15 Hz, 20 Hz, 25 Hz, 30 Hz, 40 Hz, 50 Hz
- **Integrated application:** output of measurement data, 2D Object Detection, 2D Object Detection Advanced
- **Digital add-ons:** Dynamic Sensing Profile package, Data Reduction & Data Preparation package, Reliability package, Multi-echo technology, LMDscandata (data format), Reflector detection, IMU (Inertial Measurement Unit), PTP, Native ROS2
- **Connection type:** 2 M12 round connector
- **Variant:** standard (not pre-configured)

| System plug | Type | Part no. |
|-------------------------|---------------------------|----------|
| See system plug 2116047 | PICS150-01000 Pro-1 | 1134610 |
| See system plug 2130754 | PICS150-01000 Pro-2 6 I/O | 1142273 |

- **Working range:** 0.05 m ... 25 m
- **Scanning range:** 25 m at 90% remission, 12 m at 10% remission
- **Angular resolution:** 0.25°, 0.33°
- **Scanning frequency:** 15 Hz, 25 Hz
- **Integrated application:** 2D Object Detection, LiDAR-LOC 2, Virtual Line Navigation, CODE-LOC, output of measurement data

| Digital add-ons | Connection type | System plug | Variant | Type | Part no. |
|--|-----------------------|-------------------------|-------------------------------|------------------------|----------|
| Multi-echo technology, Data Reduction & Data Preparation package, Reliability package, LMDscandata (data format), Reflector detection, IMU (Inertial Measurement Unit) | 2 M12 round connector | See system plug 2130754 | Standard (not pre-configured) | PICS150-01000 LOC Core | 1141395 |

- **Working range:** 0.05 m ... 60 m
- **Scanning range:** 47 m at 90% remission, 25 m at 10% remission
- **Angular resolution:** 0.1°, 0.25°
- **Scanning frequency:** 15 Hz, 20 Hz, 25 Hz
- **Integrated application:** 2D Object Detection, LiDAR-LOC 2, Virtual Line Navigation, CODE-LOC, output of measurement data

| Digital add-ons | Connection type | System plug | Variant | Type | Part no. |
|---|-----------------------|-------------------------|-------------------------------|-------------------------|----------|
| Dynamic Sensing Profile package, Multi-echo technology, Data Reduction & Data Preparation package, Reliability package, LMDscandata (data format), Reflector detection, IMU (Inertial Measurement Unit) | 2 M12 round connector | See system plug 2130754 | Standard (not pre-configured) | PICS150-01000 LOC Prime | 1141396 |

- **Working range:** 0.05 m ... 120 m
- **Scanning range:** 75 m at 90% remission, 40 m at 10% remission
- **Angular resolution:** 0.05°, 0.1°, 0.125°, 0.25°, 0.33°, 0.5°
- **Scanning frequency:** 15 Hz, 20 Hz, 25 Hz
- **Integrated application:** 2D Object Detection, LiDAR-LOC 2, Virtual Line Navigation, CODE-LOC, output of measurement data

| Digital add-ons | Connection type | System plug | Variant | Type | Part no. |
|--|-----------------------|-------------------------|-------------------------------|-----------------------|----------|
| Dynamic Sensing Profile package, Multi-echo technology, Data Reduction & Data Preparation package, Reliability package, LMDscan-data (data format), Reflector detection, IMU (Inertial Measurement Unit) | 2 M12 round connector | See system plug 2130754 | Standard (not pre-configured) | PICS150-01000 LOC Pro | 1141397 |

SICK AT A GLANCE

SICK is one of the leading manufacturers of intelligent sensors and sensor solutions for industrial applications. A unique range of products and services creates the perfect basis for controlling processes securely and efficiently, protecting individuals from accidents and preventing damage to the environment.

We have extensive experience in a wide range of industries and understand their processes and requirements. With intelligent sensors, we can deliver exactly what our customers need. In application centers in Europe, Asia and North America, system solutions are tested and optimized in accordance with customer specifications. All this makes us a reliable supplier and development partner.

Comprehensive services complete our offering: SICK LifeTime Services provide support throughout the machine life cycle and ensure safety and productivity.

For us, that is “Sensor Intelligence.”

WORLDWIDE PRESENCE:

Contacts and other locations –www.sick.com