

Pressure sensors SPBA, for valves

FESTO



Datasheet

Pressure sensor SPBA

- Pressure sensor with permanently set switching point
- Electrical connection: plug M12x1 to EN 60947-5-2
- Mounting: Screw-in



General technical data			
Type		SPBA-P2R-G18-2P-...	SPBA-P2R-G18-W-...
Electrical connection		Plug to EN 60947-5-2, M12x1, 4-pin, round design	
Operating voltage range	[V DC]	19.2 ... 30	
Max. output current	[mA]	500	1000
Min. load current (at 24 V)	[mA]	–	2
Short circuit current rating		Yes	–
Reverse-polarity protection		For all electrical connections	
Type of mounting		Screw-in, 22 mm	Screw-in, 24 mm
Mounting position		Any	
Pneumatic connection		G1/8	
Weight	[g]	50	80
Degree of protection to EN 60529		IP65	

Materials			
Type		SPBA-P2R-G18-2P-...	SPBA-P2R-G18-W-...
Housing		High-alloy stainless steel	Steel
Plug		PBT	POM
Note on materials		RoHS-compliant	

Operating and environmental conditions			
Type		SPBA-P2R-G18-2P-...	SPBA-P2R-G18-W-...
Operating medium		Compressed air to ISO 8573-1:2010 [7:4:4]	
Note on the operating/pilot medium		Lubricated operation possible	
Ambient temperature	[°C]	–5 ... +50	
Operating pressure	[bar]	–1 ... +10	
	[MPa]	–0.1 ... 1	
	[psi]	–14.5 ... 145	
Corrosion resistance class CRC ¹⁾		4	0
CE marking (see declaration of conformity)		To EU EMC Directive ²⁾	–
		To EU Machinery Directive	–
UKCA marking (see declaration of conformity)		To UK instructions for EMC	–
		To UK RoHS instructions	–
PWIS conformity		VDMA24364-B1/B2-L	

1) More information: www.festo.com/x/topic/kbk

2) For information about the area of use, see the EC declaration of conformity at: www.festo.com/catalogue/SPBA → Support/Downloads.

If the devices are subject to usage restrictions in residential, commercial or light-industrial environments, further measures for the reduction of the emitted interference may be necessary.

Datasheet

Input signal/measuring element		
Type	SPBA-P2R-G18-2P-...	SPBA-P2R-G18-W-...
Measured variable	Relative pressure	Relative pressure
Measurement method	Metal thin-film pressure sensor	Pneumatic/electric pressure transducer

Electrical data		
Type	SPBA-P2R-G18-2P-...	SPBA-P2R-G18-W-...
Switching output	2x PNP	Contacting
Switching function	Threshold value – fixed hysteresis	
Switching element function	Antivalent	Changeover switch
Switch-on point	[bar]	0.25, permanently set
Max. switch-on point	[bar]	0.40
Switch-off point min.	[bar]	0.05

Pin allocation to EN 60947-5-2			
Plug, 4-pin			
M12x1			
	Pin	SPBA-P2R-G18-2P-...	SPBA-P2R-G18-W-... ¹⁾
	1	Operating voltage +24 V DC	Operating voltage +24 V DC
	2	N/C	N/C
	3	0 V	n.c.
	4	N/O	N/O

1) Allocation for PNP switching logic; other connection types are possible

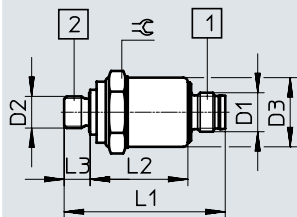
Circuit symbol	
SPBA-P2R-G18-2P-... 	SPBA-P2R-G18-W-...

Datasheet

Dimensions

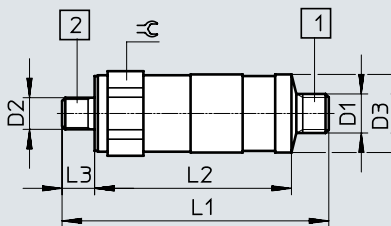
Download CAD data → www.festo.com

SPBA-P2R-G18-2P-...



- [1] Plug M12x1
- [2] Pressure supply port G1/8

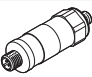

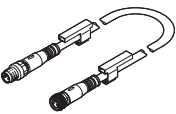
SPBA-P2R-G18-W-...



- [1] Plug M12x1 to EN 61076-2-101
- [2] Pressure supply port G1/8

Type	D1	D2	D3 ∅	L1	L2	L3	⊕
SPBA-P2R-G18-2P-M12-0.25X	M12x1	G1/8	21.3	49.6	38.1	8	22
SPBA-P2R-G18-W-M12-0.25X	M12x1	G1/8	26	82	56 ^{+2.5}	10	24

Ordering data

	Description	Part no.	Type
Pressure switch			
	Mechanical pressure switch, pneumatic-electric pressure transducer, switching output contacting	8000033	SPBA-P2R-G18-W-M12-0.25X
	Electric pressure switch, metal thin-film pressure sensor, switching output 2xPNP	8000210	SPBA-P2R-G18-2P-M12-0.25X
Connecting cable			
	Socket M12x1, 5-pin, plug M12x1, 4-pin, for pressure switch connection	0.5 m	8000208 NEBU-M12G5-K-0.5-M12G4

Festo - Your Partner in Automation



1 Festo Inc.
5300 Explorer Drive
Mississauga, ON L4W 5G4
Canada

Festo Customer Interaction Center
Tel: 1 877 463 3786
Fax: 1 877 393 3786
Email: customer.service.ca@festo.com

2 Festo Pneumatic
Av. Ceylán 3,
Col. Tequesquináhuac
54020 Tlalneantla,
Estado de México

Multinational Contact Center
01 800 337 8669
ventas.mexico@festo.com

3 Festo Corporation
1377 Motor Parkway
Suite 310
Islandia, NY 11749

Festo Customer Interaction Center
1 800 993 3786
1 800 963 3786
customer.service.us@festo.com

4 Regional Service Center
7777 Columbia Road
Mason, OH 45040

Connect with us



www.festo.com/socialmedia



www.festo.com

Subject to change