

One-way flow control valve VFOH

FESTO



Characteristics

At a glance

Corrosion-resistant shut-off/flow control valve. External hexagon head as actuating element.

- Easy-to-clean housing (clean design)
- Can be rotated horizontally through 360° when mounted

Diagrams

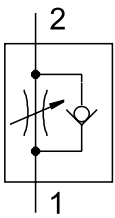
Further information → [vfoh](#)



The diagrams shown in this document are also available online. These can be used to display precise values.

Function

[E] One-way flow control valve for exhaust air



The speed can be adjusted using exhaust air flow control. Free flowing supply air and throttled exhaust air ensure that the piston moves between the air cushions. This improves motion, even when the load changes.

Adjusting component

[A] External hex

The exhaust air one-way flow control function can be adjusted using a hexagon head.

Type code

001	Series
VFOH	One-way flow control valve
002	Design
L	L-shape
003	Function
E	One-way flow control valve for exhaust air
004	Adjusting component
A	External hex

005	Pneumatic connection
G18	G1/8
G14	G1/4
006	Pneumatic connection 1
Q4	Push-in connector 4 mm
Q6	Push-in connector 6 mm
Q8	Push-in connector 8 mm
Q10	Push-in connector 10 mm

Datasheet

General technical data

Valve function	Exhaust air one-way flow control function		
Pneumatic connection, port 2	G1/8	G1/4	
Pneumatic connection, port 1	QS-4, QS-6, QS-8	QS-8, QS-10	
Adjustment component	External hex		
Type of actuation	Manual		
Type of mounting	Screw-in		
Mounting position	optional		
Nominal torque	3 Nm	5 Nm	
Tolerance for nominal tightening torque	± 10%		

Operating and environmental conditions

Pneumatic connection, port 2	G1/8		G1/4		
Pneumatic connection, port 1	QS-4	QS-6	QS-8	QS-10	
Operating pressure complete temperature range	0.2 ... 10 bar				
Operating medium	Compressed air to ISO 8573-1:2010 [7:4:4]				
Note on operating and pilot medium	Lubricated operation possible (in which case lubricated operation will always be required)				
Ambient temperature	0 ... 150°C				
Media temperature	0 ... 150°C				
Storage temperature	-10 ... 150°C				
Standard nominal flow rate in flow control direction	180 l/min	255 l/min	275 l/min	530 l/min	520 l/min
Standard nominal flow rate in blocked direction	103 ... 188 l/min	111 ... 280 l/min	132 ... 307 l/min	402 ... 578 l/min	345 ... 535 l/min
Standard flow rate in flow control direction 0.6->0 MPa (6->0 bar, 87->0 psi)	250 l/min	370 l/min	400 l/min	720 l/min	840 l/min
Standard flow rate in non-return direction 0.6->0 MPa (6->0 bar, 87->0 psi)	270 ... 300 l/min	330 ... 390 l/min	330 ... 410 l/min	610 ... 760 l/min	635 ... 790 l/min
Corrosion resistance class CRC ¹⁾	3 - High corrosion stress				

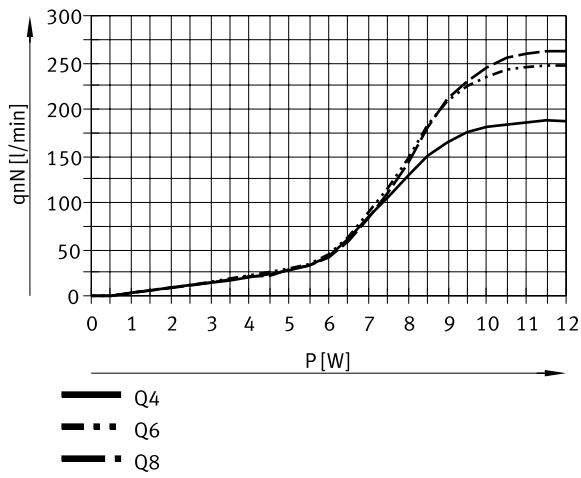
1) More information www.festo.com/x/topic/crc

Materials

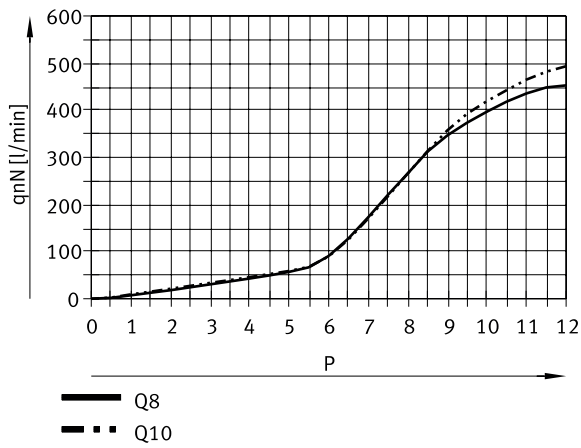
Material swivel fitting	Brass, Nickel-plated
Material release ring	Nickel-plated brass
Material hollow bolt	Wrought aluminium alloy
Material seals	FPM
Material adjusting screw	High-alloy stainless steel
Note on materials	RoHS-compliant
LABS (PWIS) conformity	VDMA24364-B2-L

Datasheet

Standard nominal flow rate q_{nN} at 6 → 5 bar as a function of spindle rotations n (VFOH-LE-A-G18)



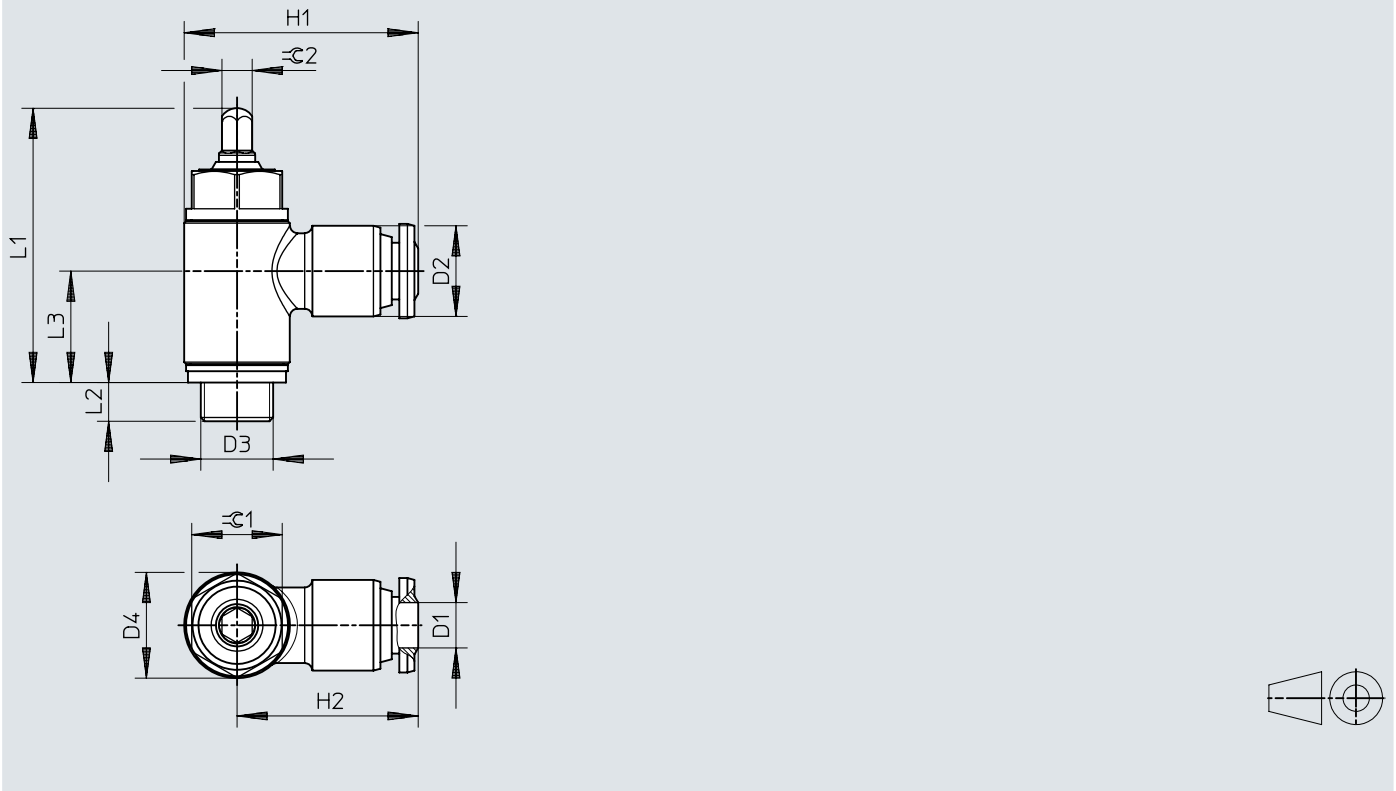
Standard nominal flow rate q_{nN} at 6 → 5 bar as a function of spindle rotations n (VFOH-LE-A-G14)



Dimensions

Dimensions – One-way flow control valves

Download CAD data → www.festo.com



	D1	D2	D2 ∅	D4 ∅	H1	H2	L1	L2	L3	$\varnothing 1$	$\varnothing 2$
VFOH-LE-A-G18	G1/8	4	10,5	14	28	21	~36,3	~5,2	~14,8	12	4
		6	12		31	24					
		8	14		32	25					
VFOH-LE-A-G14	G1/4	8	14	18	36	27	~39,9	~6,1	~17,5	15	5
		10	17,7		41	32					

Ordering data

Ordering data						
Pneumatic connection, port 2	Pneumatic connection, port 1	Standard flow rate in flow control direction 0.6->0 MPa (6->0 bar, 87->0 psi)	Standard flow rate in non-return direction 0.6->0 MPa (6->0 bar, 87->0 psi)	Product weight	Part no.	Type
G1/8	QS-4	250 l/min	270 ... 300 l/min	23 g	578797	VFOH-LE-A-G18-Q4
	QS-6	370 l/min	330 ... 390 l/min		578798	VFOH-LE-A-G18-Q6
	QS-8	400 l/min	330 ... 410 l/min		578799	VFOH-LE-A-G18-Q8
G1/4		720 l/min	610 ... 760 l/min	37 g	578800	VFOH-LE-A-G14-Q8
	QS-10	840 l/min	635 ... 790 l/min	48 g	578801	VFOH-LE-A-G14-Q10